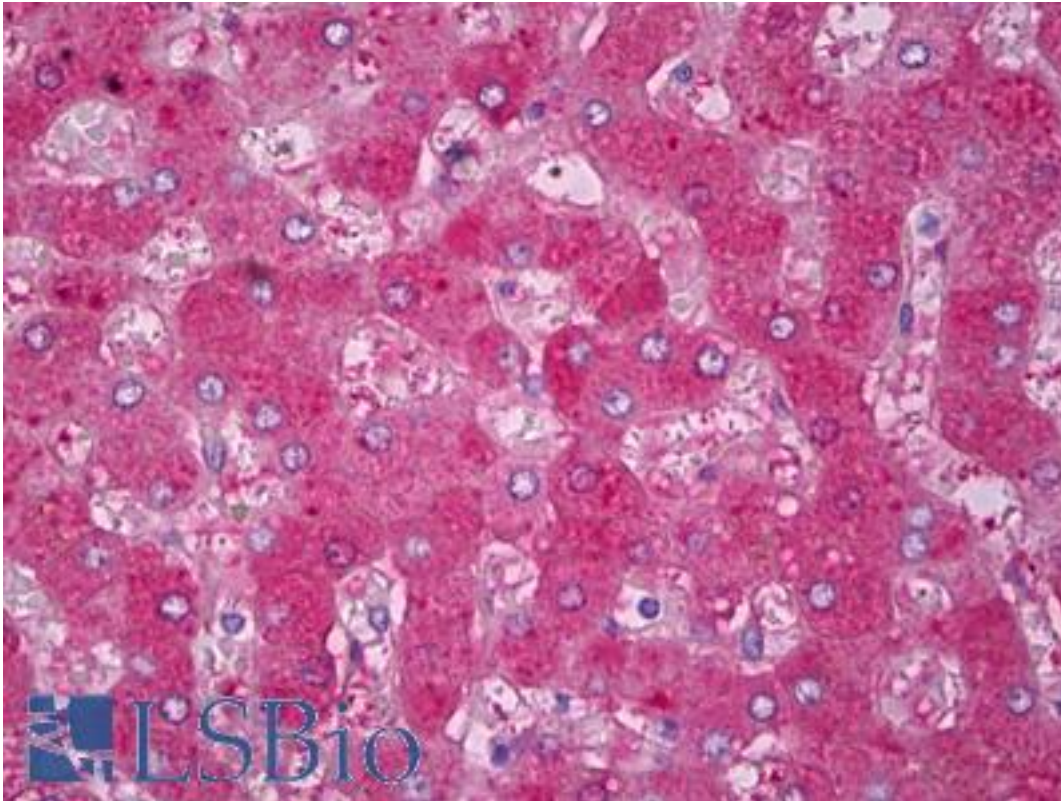


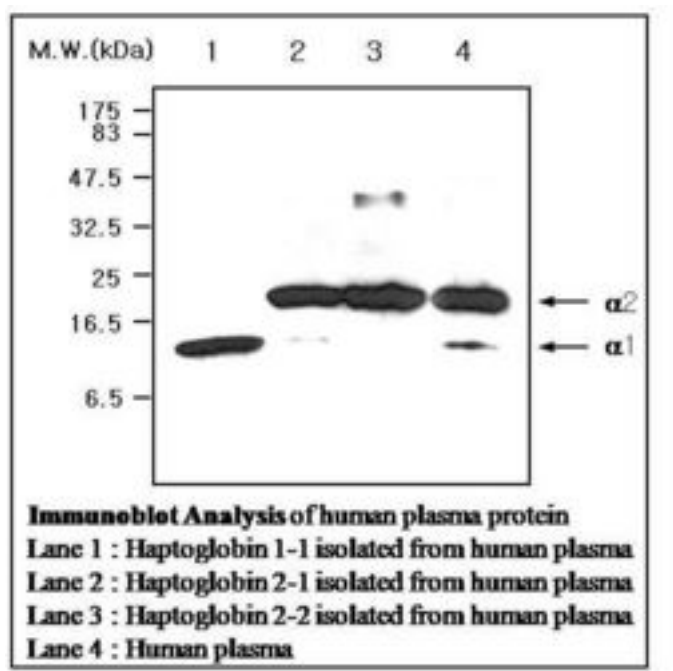
HP / Haptoglobin Mouse anti-Human Monoclonal (26E11) Antibody - LS-B7083 - LSBio	
CatalogID:	LS-B7083
Validation:	This antibody replaces catalog number LS-C62011. It has been validated for use in the following assays: IHC-P.
Target:	haptoglobin (HP)
Synonyms:	HP Antibody, Binding peptide Antibody, Haptoglobin alpha(1S)-beta Antibody, Haptoglobin, beta polypeptide Antibody, Haptoglobin Antibody, Haptoglobin alpha(2FS)-beta Antibody, Haptoglobin, alpha polypeptide Antibody, HP2ALPHA2 Antibody, BP Antibody, Zonulin Antibody, HPA1S Antibody
Host	HP antibody was produced in Mouse
Clonality:	Monoclonal
Isotype:	IgG1,k
Clone Name:	26E11
Immunogen Species:	HP / Haptoglobin antibody was raised against Human
Immunogen:	HP / Haptoglobin antibody was raised against protein purified from Human plasma.
Reactivity:	Human
Purification:	Ammonium sulfate precipitation
Presentation:	HEPES with 0.15M NaCl, 0.01% BSA, 0.03% sodium azide, and 50% glycerol. Sourced in Ascites.
Recommended Storage:	Short term 4°C, long term aliquot and store at -20°C, avoid freeze thaw cycles.
Uses:	IHC - Paraffin (1:200), Western blot (1:500), ELISA (Optimal dilution to be determined by the researcher)
Size:	50 µl

Immunohistochemistry Image:



Anti-Haptoglobin antibody IHC of human liver. Immunohistochemistry of formalin-fixed, paraffin-embedded tissue after heat-induced antigen retrieval. Antibody LS-B7083 dilution 1:200.

Western Blot Image:



Laboratory Reagent For In Vitro Research Use Only

Not for resale without prior written consent from LifeSpan BioSciences, Inc.

Created on 9/24/2014

© 2014 LifeSpan BioSciences