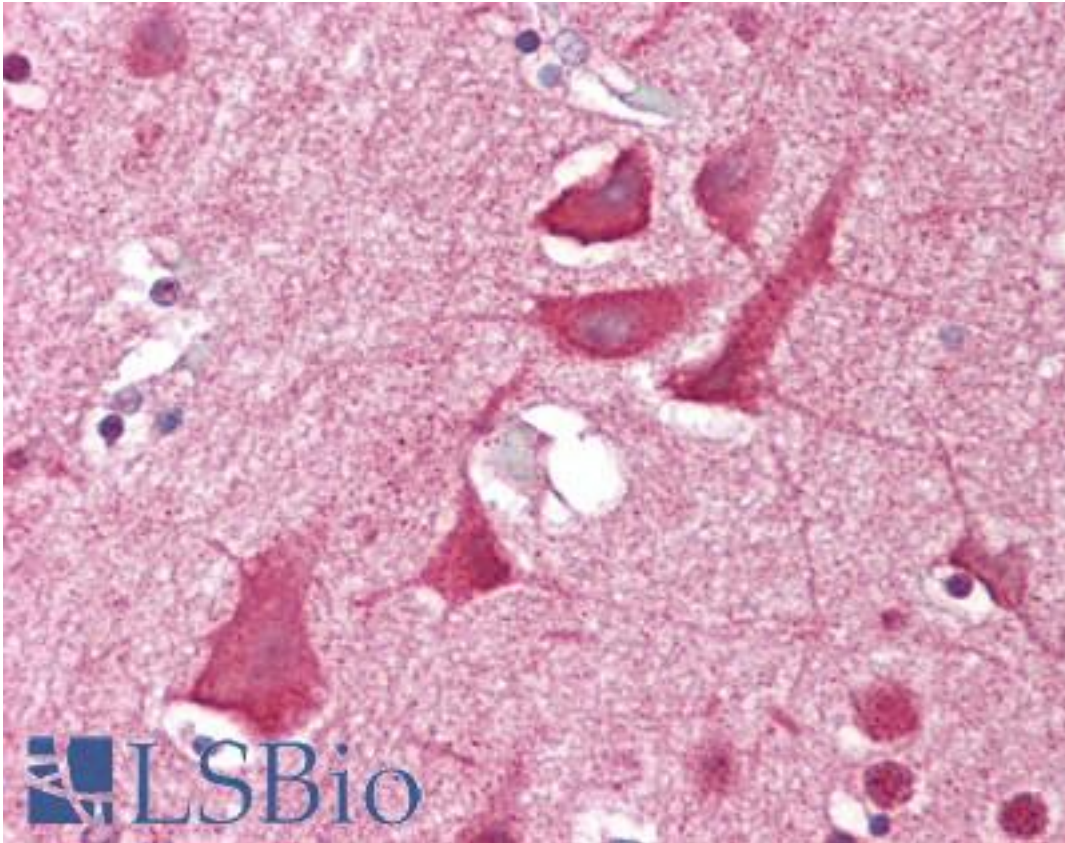


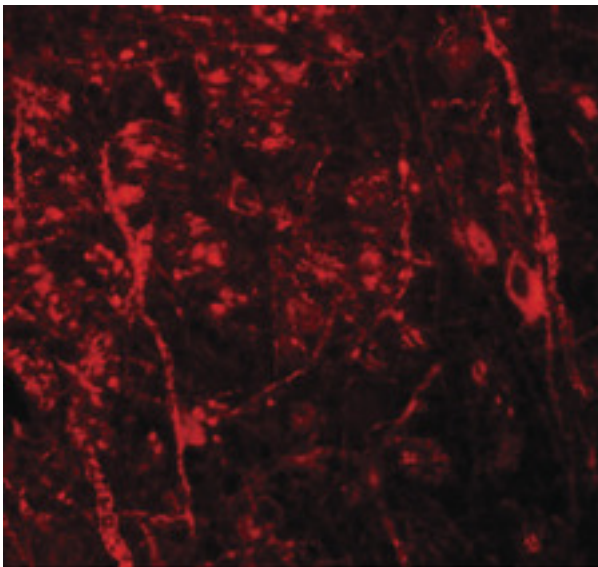
NKX3-2 / BAPX1 Rabbit anti-Human Polyclonal (Internal) Antibody - LS-B7039 - LSBio	
CatalogID:	LS-B7039
Validation:	This antibody replaces catalog number LS-C144335. It has been validated for use in the following assays: IHC-P.
Target:	NK3 homeobox 2 (NKX3-2)
Synonyms:	NKX3-2 Antibody, NK3 homeobox 2 Antibody, NKX3.2 Antibody, Homeobox protein Nkx-3.2 Antibody, BAPX1 Antibody, NKX3B Antibody, SMMD Antibody
Host	NKX3-2 antibody was produced in Rabbit
Clonality:	Polyclonal
Immunogen Species:	NKX3-2 / BAPX1 antibody was raised against Human
Antigen Type:	Synthetic peptide
Immunogen:	NKX3-2 / BAPX1 antibody was raised against a 19 amino acid peptide near the center of human BAPX1
Specificity:	Human NKX3-2 / BAPX1. BAPX1 antibody is predicted not to cross-react with other NKX homeobox proteins.
Epitope:	Internal
Reactivity:	Human
Purification:	Immunoaffinity purified
Presentation:	PBS, 0.02% sodium azide
Recommended Storage:	Short term 4°C, long term aliquot and store at -20°C, avoid freeze thaw cycles. Store undiluted.
Uses:	IHC - Paraffin (5 µg/ml), Western blot (0.5 - 1 µg/ml) (Optimal dilution to be determined by the researcher)
Size:	50 µg
Concentration:	1 mg/ml

Immunohistochemistry Image:



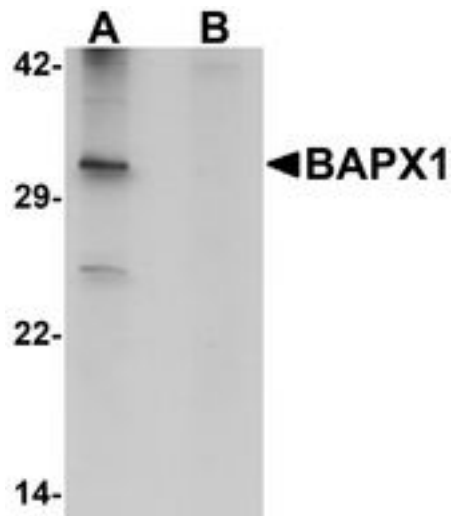
Anti-NKX3-2 antibody IHC of human brain, cortex. Immunohistochemistry of formalin-fixed, paraffin-embedded tissue after heat-induced antigen retrieval. Antibody LS-B7039 concentration 5 ug/ml.

Immunofluorescence Image:



Immunofluorescence of BAPX1 in mouse brain tissue with BAPX1 antibody at 20 ug/ml.

Western Blot Image:



Western blot analysis of BAPX1 in human brain tissue lysate with BAPX1 antibody at 1 ug/ml in (A) the absence and (B) the presence of blocking peptide.

Requested From:

Japan

Laboratory Reagent For In Vitro Research Use Only

Not for resale without prior written consent from LifeSpan BioSciences, Inc.

Created on 9/24/2014

© 2014 LifeSpan BioSciences