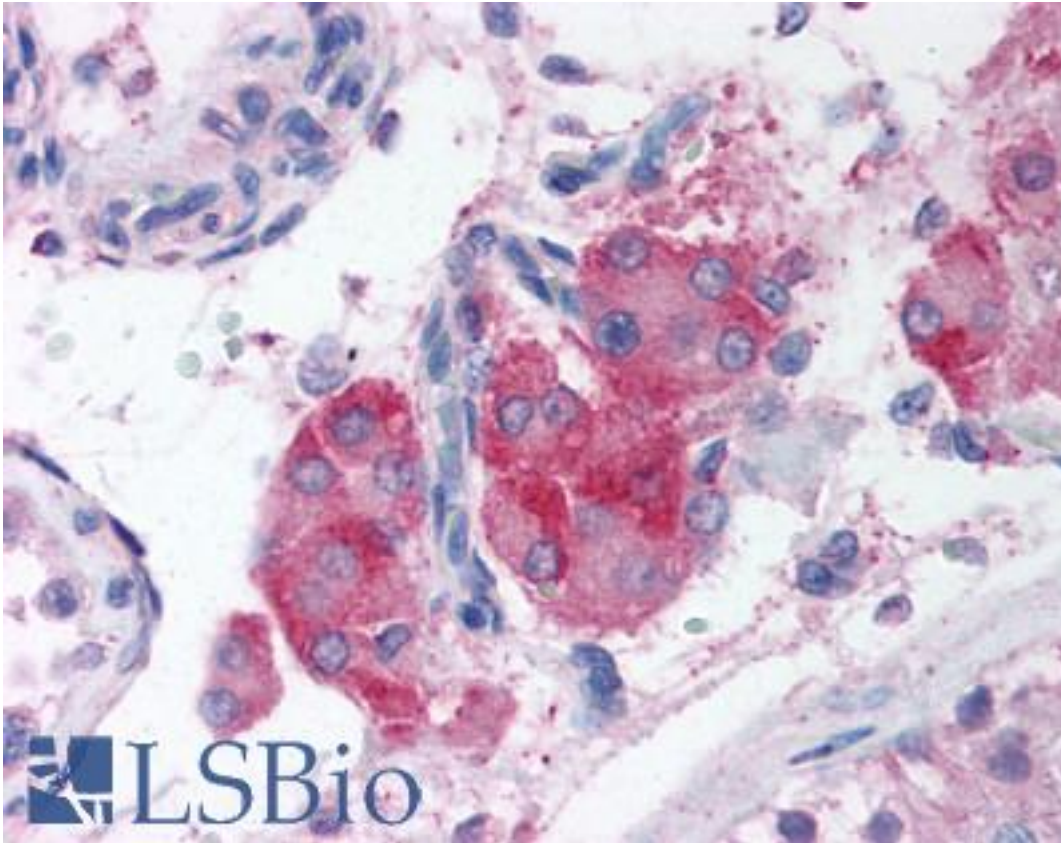


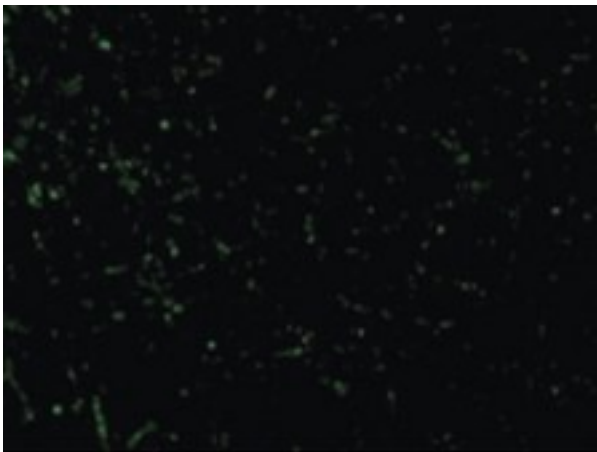
CIDEA / CIDE-A Rabbit anti-Human Polyclonal (aa200-217) Antibody - LS-B703 - LSBio	
<b>CatalogID:</b>	LS-B703
<b>Validation:</b>	This antibody replaces catalog number LS-C297. It has been validated for use in the following assays: IHC.
<b>Target:</b>	cell death-inducing DFFA-like effector a (CIDEA)
<b>Synonyms:</b>	CIDEA Antibody, CIDE-A Antibody, Cell death activator CIDE-A Antibody
<b>Family / Subfamily:</b>	Apoptosis
<b>Host</b>	CIDEA antibody was produced in Rabbit
<b>Clonality:</b>	Polyclonal
<b>Immunogen Species:</b>	CIDEA / CIDE-A antibody was raised against Human
<b>Antigen Type:</b>	Synthetic peptide
<b>Immunogen:</b>	CIDEA / CIDE-A antibody was raised against synthetic peptide from human CIDEA.
<b>Specificity:</b>	peptide corresponding to amino acids 200 to 217 of human CIDE-A
<b>Epitope:</b>	aa200-217
<b>Reactivity:</b>	Human
<b>Purification:</b>	Immunoaffinity purified
<b>Presentation:</b>	PBS, 0.02% sodium azide.
<b>Recommended Storage:</b>	Short term 4°C, long term aliquot and store at -20°C, avoid freeze thaw cycles. Store undiluted.
<b>Usage Summary:</b>	Immunohistochemistry: LS-B703 was validated for use in immunohistochemistry on a panel of 21 formalin-fixed, paraffin-embedded (FFPE) human tissues after heat induced antigen retrieval in pH 6.0 citrate buffer. After incubation with the primary antibody, slides were incubated with biotinylated secondary antibody, followed by alkaline phosphatase-streptavidin and chromogen. The stained slides were evaluated by a pathologist to confirm staining specificity. The optimal working concentration for LS-B703 was determined to be 10 ug/ml.
<b>Uses:</b>	IHC - Paraffin (10 µg/ml), Western blot (1:1000 - 1:2000) (Optimal dilution to be determined by the researcher)
<b>Size:</b>	50 µg
<b>Concentration:</b>	1 mg/ml

**Immunohistochemistry Image:**



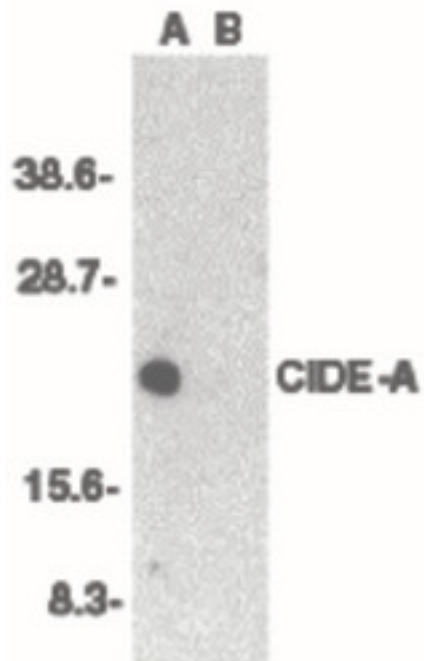
Anti-CIDE A antibody IHC of human testis. Immunohistochemistry of formalin-fixed, paraffin-embedded tissue after heat-induced antigen retrieval. Antibody LS-B703 concentration 10 ug/ml.

**Immunofluorescence Image:**



Immunofluorescence of CIDE-A in Human Brain cells with CIDE-A antibody at 20 ug/ml.

**Western Blot Image:**



Western blot of CIDE-A in human brain tissue lysate in the absence (A) or presence (B) of blocking peptide with CIDE-A antibody at 1:2000 dilution.

**Requested From:**

Japan

Laboratory Reagent For In Vitro Research Use Only

Not for resale without prior written consent from LifeSpan BioSciences, Inc.

Created on 9/24/2014

© 2014 LifeSpan BioSciences