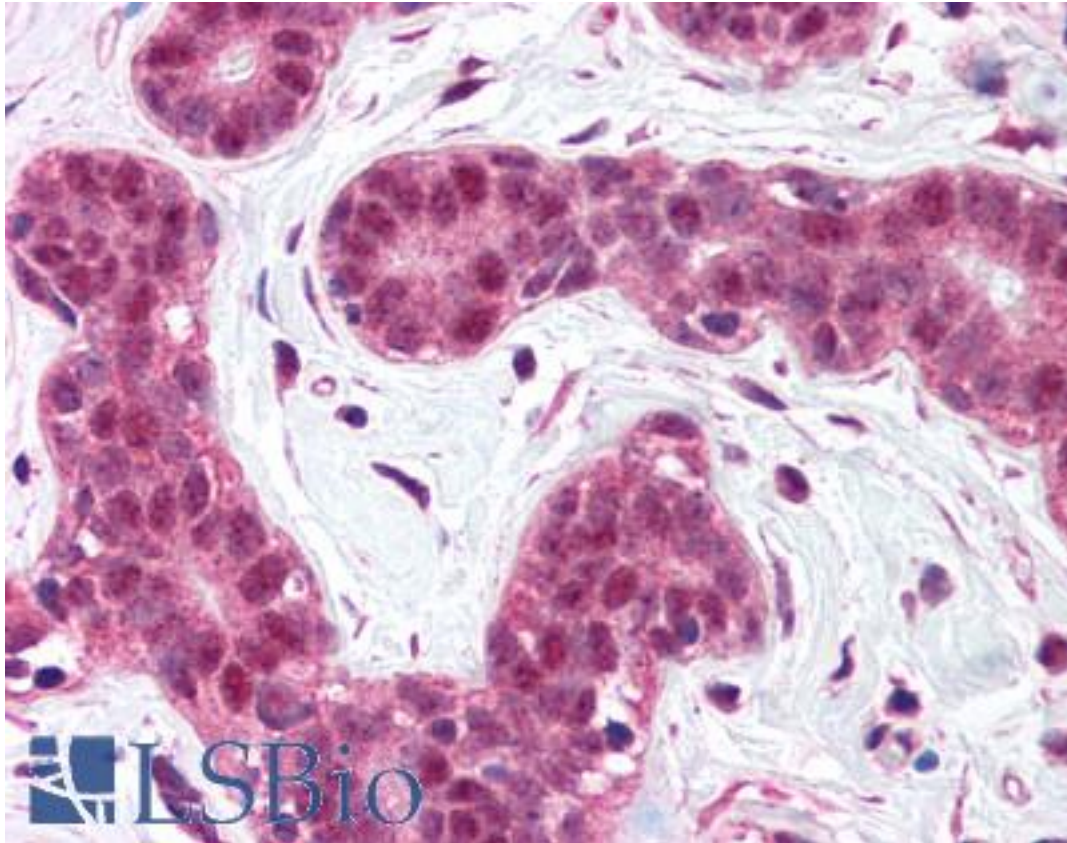


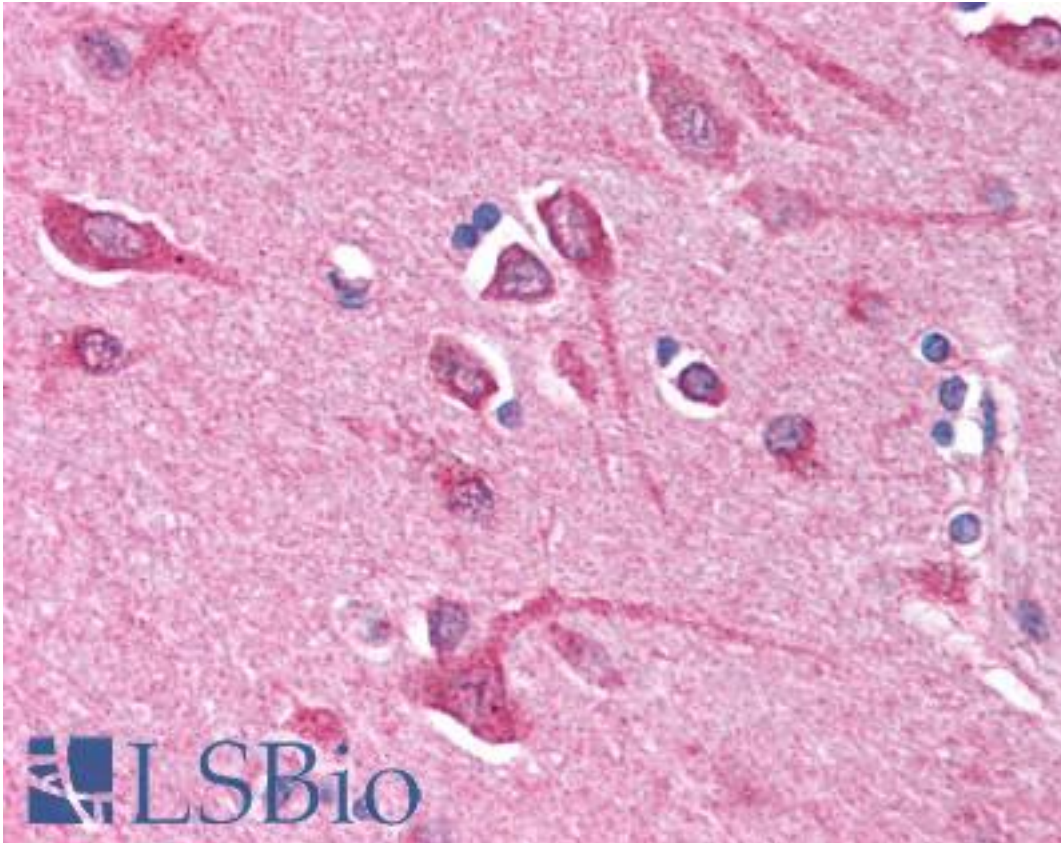
BCL10 / BCL-10 Rabbit anti-Human Polyclonal (N-Terminus) Antibody - LS-B700 - LSBio	
<b>CatalogID:</b>	LS-B700
<b>Validation:</b>	This antibody replaces catalog number LS-C321. It has been validated for use in the following assays: IHC.
<b>Target:</b>	B-cell CLL/lymphoma 10 (BCL10)
<b>Synonyms:</b>	BCL10 Antibody, Bcl-10 Antibody, B-cell CLL/lymphoma 10 Antibody, B-cell lymphoma/leukemia 10 Antibody, CARMEN Antibody, CARD-like apoptotic protein Antibody, CCARMEN Antibody, C-E10 Antibody, CIPER Antibody, Cellular-E10 Antibody, HCLAP Antibody, Cellular homolog of vCARMEN Antibody, CLAP Antibody, ME10 Antibody
<b>Family / Subfamily:</b>	Apoptosis
<b>Host</b>	BCL10 antibody was produced in Rabbit
<b>Clonality:</b>	Polyclonal
<b>Immunogen Species:</b>	BCL10 / BCL-10 antibody was raised against Human
<b>Antigen Type:</b>	Synthetic peptide
<b>Immunogen:</b>	BCL10 / BCL-10 antibody was raised against synthetic peptide from human BCL10.
<b>Specificity:</b>	peptide corresponding to amino acids near the amino terminus of human Bcl10
<b>Epitope:</b>	N-Terminus
<b>Reactivity:</b>	Human, Mouse, Rat
<b>Purification:</b>	Immunoaffinity purified
<b>Presentation:</b>	PBS, 0.02% sodium azide.
<b>Recommended Storage:</b>	Short term 4°C, long term aliquot and store at -20°C, avoid freeze thaw cycles. Store undiluted.
<b>Usage Summary:</b>	Immunohistochemistry: LS-B700 was validated for use in immunohistochemistry on a panel of 21 formalin-fixed, paraffin-embedded (FFPE) human tissues after heat induced antigen retrieval in pH 6.0 citrate buffer. After incubation with the primary antibody, slides were incubated with biotinylated secondary antibody, followed by alkaline phosphatase-streptavidin and chromogen. The stained slides were evaluated by a pathologist to confirm staining specificity. The optimal working concentration for LS-B700 was determined to be 5 ug/ml.
<b>Uses:</b>	IHC - Paraffin (5 µg/ml), ICC, Western blot (1:500) (Optimal dilution to be determined by the researcher)
<b>Size:</b>	50 µg
<b>Concentration:</b>	1 mg/ml

**Immunohistochemistry Image:**



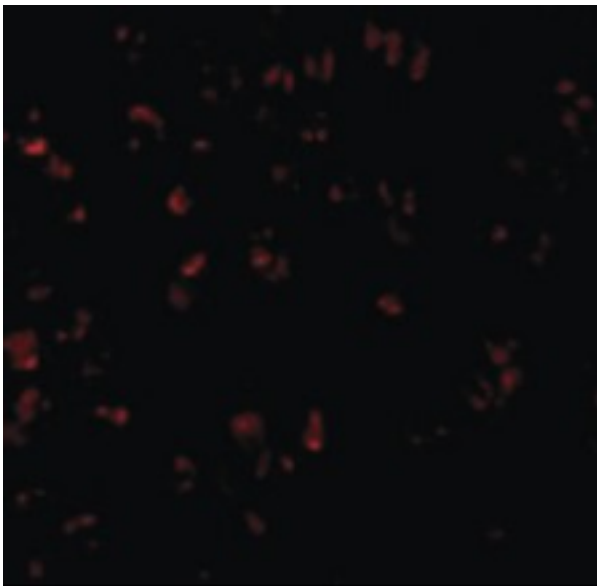
Anti-BCL10 antibody IHC of human breast. Immunohistochemistry of formalin-fixed, paraffin-embedded tissue after heat-induced antigen retrieval. Antibody LS-B700 concentration 5 ug/ml.

**Immunohistochemistry Image:**



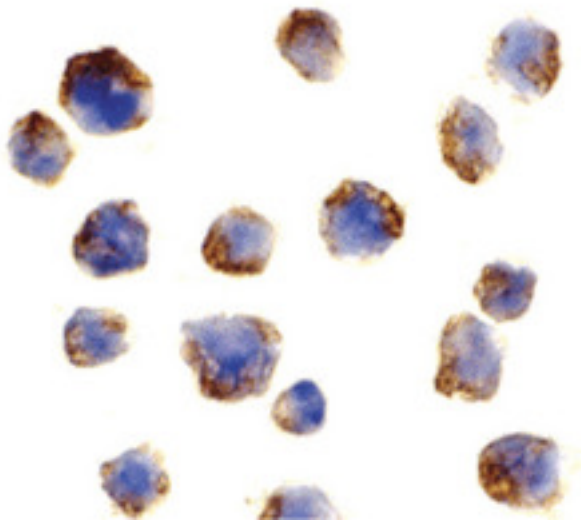
Anti-BCL10 antibody IHC of human brain, cortex. Immunohistochemistry of formalin-fixed, paraffin-embedded tissue after heat-induced antigen retrieval. Antibody LS-B700 concentration 5 ug/ml.

**Immunofluorescence Image:**



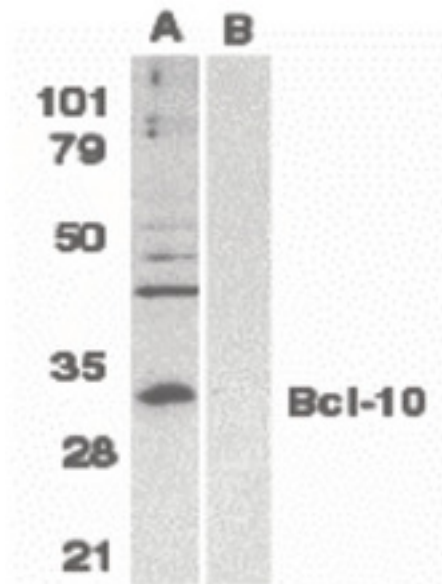
Immunofluorescence of Bcl-10 in Raji cells with Bcl-10 antibody at 10 ug/ml.

**Immunocytochemistry Image:**



Immunocytochemistry of Bcl10 in Raji cells with Bcl10 antibody at 1 ug/ml.

**Western Blot Image:**



Western blot of Bcl-10 in Raji whole cell lysate in the absence (A) or presence (B) of blocking peptide with Bcl-10 antibody at 1:500 dilution.

**Requested From:**

Japan

Laboratory Reagent For In Vitro Research Use Only

Not for resale without prior written consent from LifeSpan BioSciences, Inc.

Created on 9/24/2014

© 2014 LifeSpan BioSciences