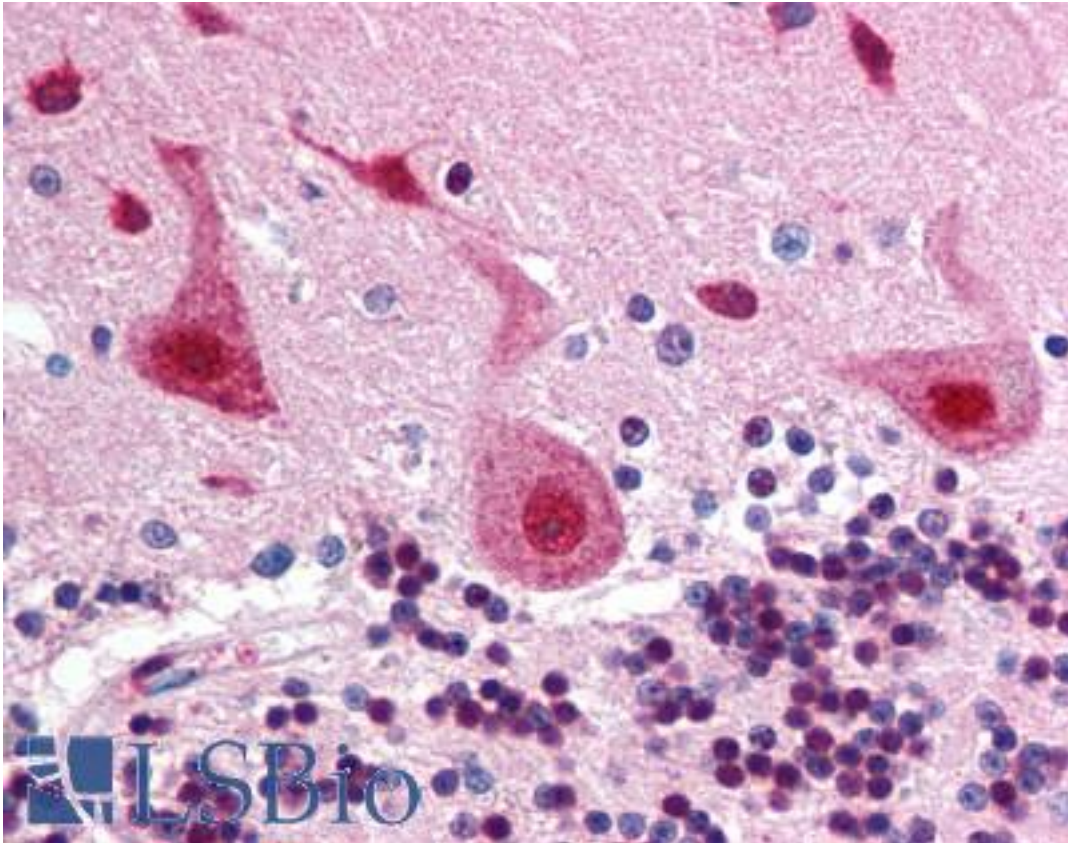


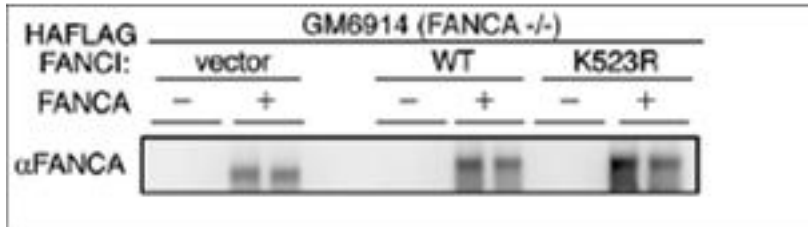
FANCA Rabbit anti-Human Polyclonal (aa995-1009) Antibody - LS-B70 - LSBio	
CatalogID:	LS-B70
Validation:	This antibody replaces catalog number LS-C18999. It has been validated for use in the following assays: IHC.
Target:	Fanconi anemia, complementation group A (FANCA)
Synonyms:	FANCA Antibody, FA1 Antibody, FACA Antibody, FA-H Antibody, Fanconi anemia group A protein Antibody, Fanconi anemia, type 1 Antibody, FA Antibody, Protein FACA Antibody, FAA Antibody, FANCH Antibody
Host	FANCA antibody was produced in Rabbit
Clonality:	Polyclonal
Immunogen Species:	FANCA antibody was raised against Human
Antigen Type:	Synthetic peptide
Immunogen:	FANCA antibody was raised against synthetic peptide from human FANCA.
Specificity:	Amino acids 995-1009 of human FANCA protein.
Epitope:	aa995-1009
Reactivity:	Human, Chimpanzee
Purification:	Immunoaffinity purified
Presentation:	0.02 M potassium phosphate, 0.15 M sodium chloride, pH 7.2, 0.01% sodium azide.
Recommended Storage:	+4°C or -20°C, Avoid repeated freezing and thawing.
Usage Summary:	Immunohistochemistry: LS-B70 was validated for use in immunohistochemistry on a panel of 21 formalin-fixed, paraffin-embedded (FFPE) human tissues after heat induced antigen retrieval in pH 6.0 citrate buffer. After incubation with the primary antibody, slides were incubated with biotinylated secondary antibody, followed by alkaline phosphatase-streptavidin and chromogen. The stained slides were evaluated by a pathologist to confirm staining specificity. The optimal working concentration for LS-B70 was determined to be 2.5 ug/ml.
Uses:	IHC - Paraffin (2.5 µg/ml), Western blot (1:500 - 1:3000), ELISA (1:15000 - 1:60000) (Optimal dilution to be determined by the researcher)
Size:	50 µg
Concentration:	1 mg/ml

Immunohistochemistry Image:



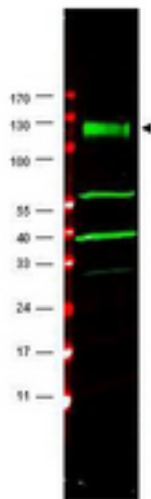
Anti-FANCA antibody IHC of human brain, cerebellum. Immunohistochemistry of formalin-fixed, paraffin-embedded tissue after heat-induced antigen retrieval. Antibody LS-B70 concentration 5 ug/ml.

Western Blot Image:



Anti-FANCA Antibody - Western Blot. Western blot of affinity purified anti-FANCA antibody shows detection of FANCA only in FANCA transfected GM6914 cell lysates. No staining is seen in lysates prepared from FANCA (-/-) cells in the absence of FANCA transfection. Modified from Smogorzewska et al (2007) Cell 129, 289-301.

Western Blot Image:



Anti-FANCA Antibody - Western Blot. Western blot of affinity purified anti-FANCA antibody shows detection of a band at ~133 kD (arrowhead) corresponding to FANCA in HeLa whole cell lysates. The identity of the lower molecular weight bands is unknown but may represent breakdown products. Approximately 35 μ g of lysate was separated by 4-20% Tris Glycine SDS-PAGE. After blocking, the membrane was probed for 2 h at room temperature with the primary antibody diluted to 1:1500. The membrane was washed and reacted with a 1:10000 dilution of IRDye800 conjugated Gt-a-Rabbit IgG [H&L] (for 45 min at room temperature (800 nm channel, green). Molecular weight estimation was made by comparison to prestained MW markers indicated at left (700 nm channel, red). IRDye800 fluorescence images were captured using the Odyssey Infrared Imaging System developed by LI-COR. IRDye is a trademark of LI-COR, Inc. Other detection systems will yield similar results.

Requested From:

Japan

Laboratory Reagent For In Vitro Research Use Only

Not for resale without prior written consent from LifeSpan BioSciences, Inc.

Created on 9/24/2014

© 2014 LifeSpan BioSciences