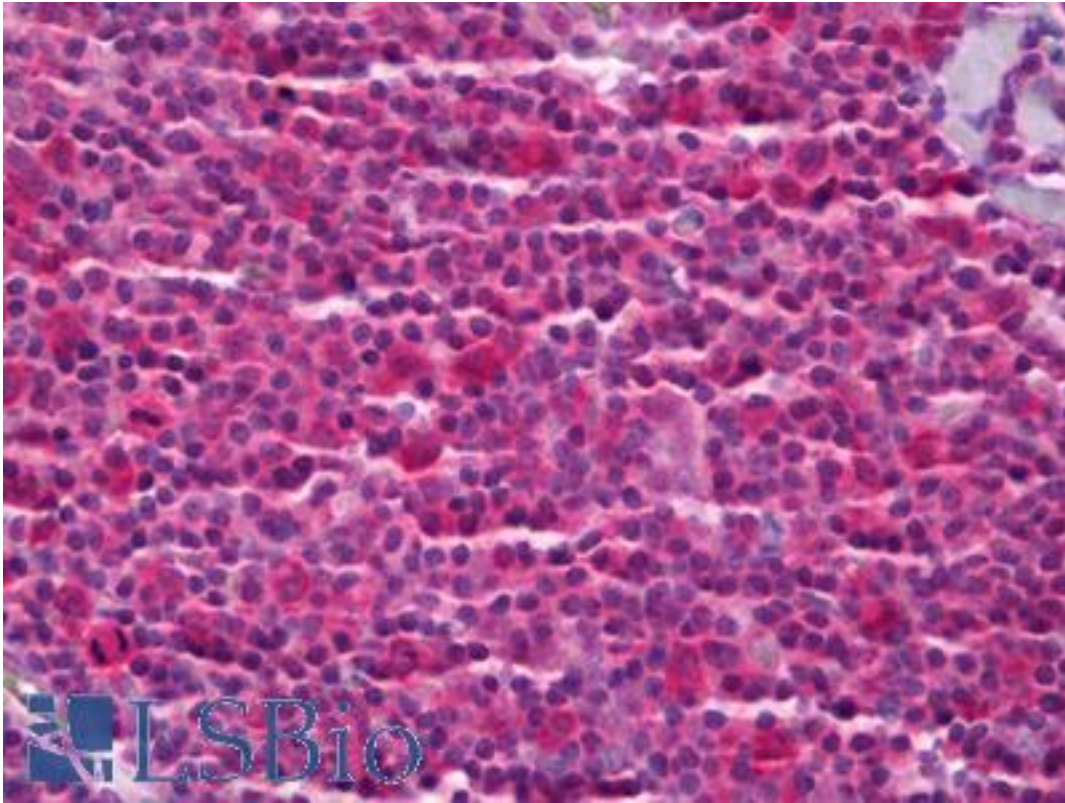


PTGES3 Rabbit anti-Human Polyclonal Antibody - LS-B6976 - LSBio	
CatalogID:	LS-B6976
Validation:	This antibody replaces catalog number LS-C146673. It has been validated for use in the following assays: IHC-P.
Target:	prostaglandin E synthase 3 (cytosolic) (PTGES3)
Synonyms:	PTGES3 Antibody, CPGES Antibody, p23 Antibody, Prostaglandin E synthase 3 Antibody, Telomerase-binding protein p23 Antibody, Hsp90 co-chaperone Antibody, TEBP Antibody
Host	PTGES3 antibody was produced in Rabbit
Clonality:	Polyclonal
Isotype:	IgG
Immunogen Species:	PTGES3 antibody was raised against Human
Immunogen:	PTGES3 antibody was raised against human cPGE synthase amino acids 58-67 (CIDPNSDKHK). Percent identity by BLAST analysis: Human, Gorilla, Orangutan, Gibbon, Monkey, Marmoset, Mouse, Rat, Dog, Bat, Bovine, Hamster, Elephant, Panda, Rabbit, Pig (100%); Horse, Platypus, Catfish, Zebrafish, Stigmatella (90%); Chicken, Lizard, Xenopus, Frog, Trout, Salmon, Smelt, Paramecium (80%).
Specificity:	Does not cross react with recombinant human mPGE synthase.
Reactivity:	Human, Gorilla, Orangutan, Gibbon, Monkey, Mouse, Rat, Bat, Bovine, Dog, Hamster, Pig, Rabbit
Predicted Reactivity:	Horse, Zebrafish
Purification:	Affinity purified
Presentation:	TBS, pH 7.4
Recommended Storage:	Short term 4°C, long term aliquot and store at -20°C, avoid freeze thaw cycles.
Uses:	IHC - Paraffin (5 µg/ml), Western blot (1:200) (Optimal dilution to be determined by the researcher)
Size:	250 µl
Concentration:	0.2 mg/ml

Immunohistochemistry Image:



Anti-PTGES3 antibody IHC of human tonsil. Immunohistochemistry of formalin-fixed, paraffin-embedded tissue after heat-induced antigen retrieval. Antibody LS-B6976 concentration 5 ug/ml.

Requested From:

Japan

Laboratory Reagent For In Vitro Research Use Only

Not for resale without prior written consent from LifeSpan BioSciences, Inc.

Created on 9/24/2014

© 2014 LifeSpan BioSciences