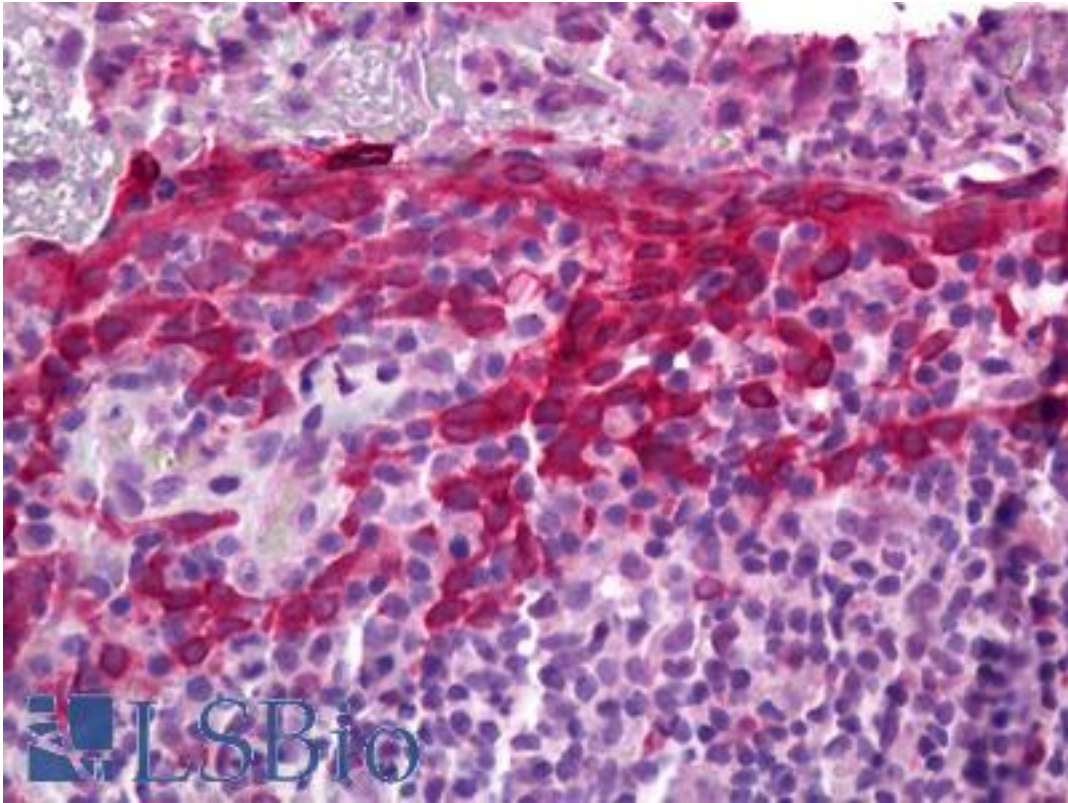


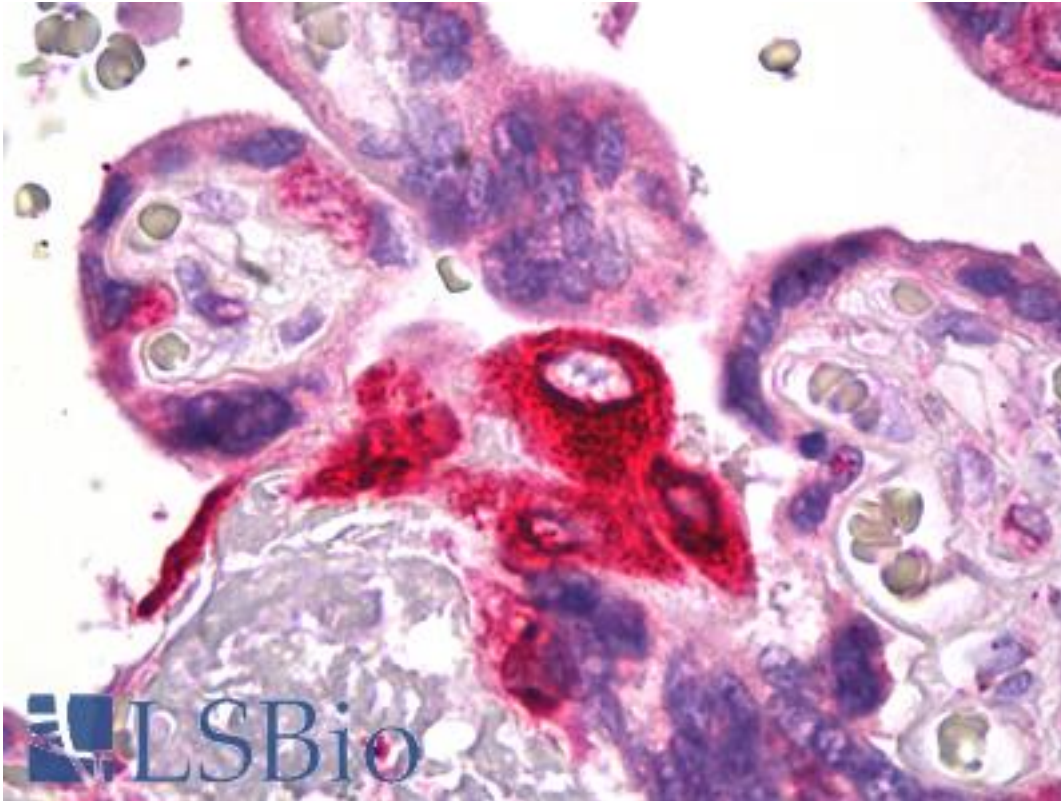
PGES / PTGES Rabbit anti-Human Polyclonal Antibody - LS-B6975 - LSBio	
<b>CatalogID:</b>	LS-B6975
<b>Validation:</b>	This antibody replaces catalog number LS-C146671. It has been validated for use in the following assays: IHC-P.
<b>Target:</b>	prostaglandin E synthase (PTGES)
<b>Synonyms:</b>	PTGES Antibody, MGST1-L1 Antibody, MGST1-like 1 Antibody, MPGES Antibody, MPGES-1 Antibody, PGES Antibody, PIG12 Antibody, PP102 Antibody, TP53I12 Antibody, MGST1L1 Antibody, MPGES1 Antibody, PP1294 Antibody, MGST-IV Antibody, p53-induced gene 12 protein Antibody, Prostaglandin E synthase Antibody
<b>Host</b>	PTGES antibody was produced in Rabbit
<b>Clonality:</b>	Polyclonal
<b>Isotype:</b>	IgG
<b>Immunogen Species:</b>	PGES / PTGES antibody was raised against Human
<b>Immunogen:</b>	PGES / PTGES antibody was raised against peptide corresponding to amino acids 59-75 (CRSDPDVERSLRAHRND) of human mPGES-1
<b>Specificity:</b>	Does not cross react with cPGES.
<b>Reactivity:</b>	Human
<b>Predicted Reactivity:</b>	Gorilla, Gibbon, Monkey, Mouse, Rat, Pig, Rabbit
<b>Purification:</b>	Affinity purified
<b>Reconstitution:</b>	Distilled Water. Possible additional volumes for resuspension: 500 µl
<b>Presentation:</b>	Lyophilized from TBS, pH 7.4
<b>Recommended Storage:</b>	Short term 4°C, long term aliquot and store at -20°C, avoid freeze thaw cycles.
<b>Uses:</b>	IHC - Paraffin (5 µg/ml), Western blot (1:200) (Optimal dilution to be determined by the researcher)
<b>Size:</b>	500 µl
<b>Concentration:</b>	0.6 mg/ml (after resuspension)

**Immunohistochemistry Image:**



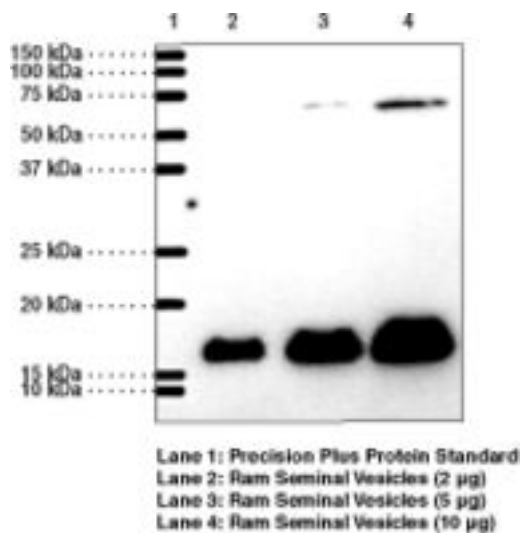
Anti-PTGES antibody IHC of human tonsil. Immunohistochemistry of formalin-fixed, paraffin-embedded tissue after heat-induced antigen retrieval. Antibody LS-B6975 concentration 5 ug/ml.

**Immunohistochemistry Image:**



Anti-PTGES antibody IHC of human placenta. Immunohistochemistry of formalin-fixed, paraffin-embedded tissue after heat-induced antigen retrieval. Antibody LS-B6975 concentration 5 ug/ml.

**Western Blot Image:**



Western blot of PGES / PTGES antibody LS-B6975.

Requested From:

Japan

Laboratory Reagent For In Vitro Research Use Only

Not for resale without prior written consent from LifeSpan BioSciences, Inc.

Created on 9/24/2014

© 2014 LifeSpan BioSciences