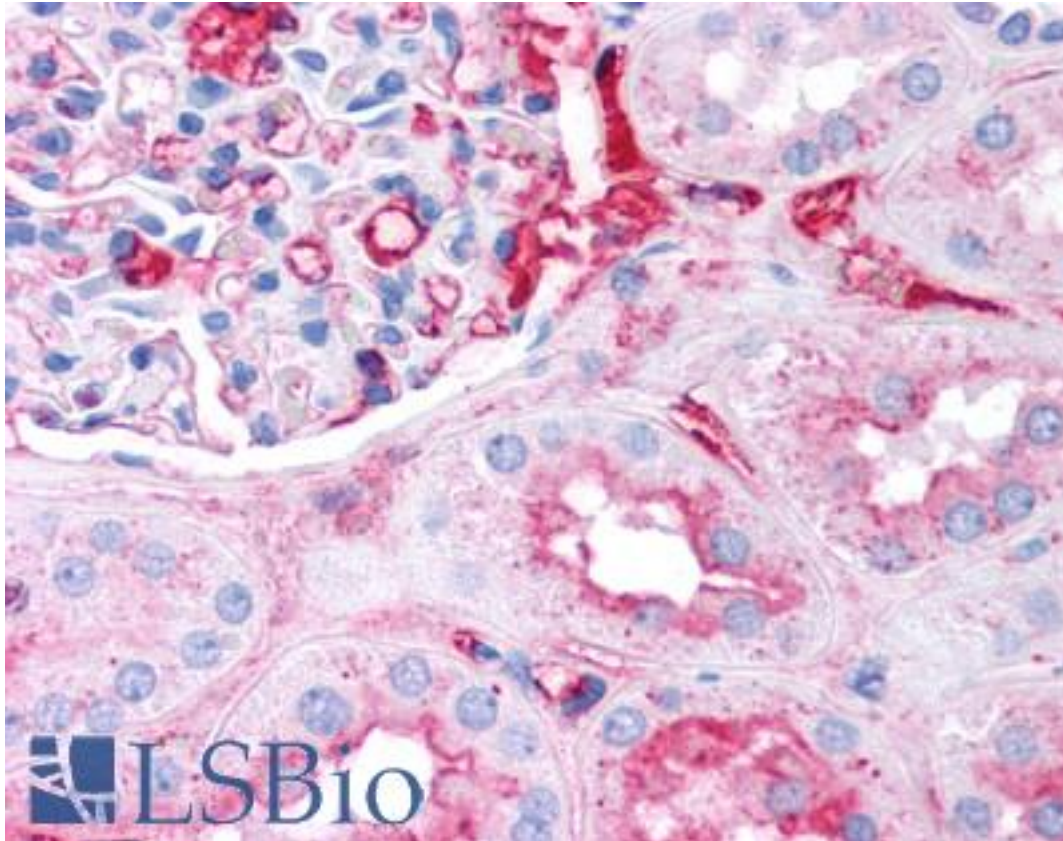


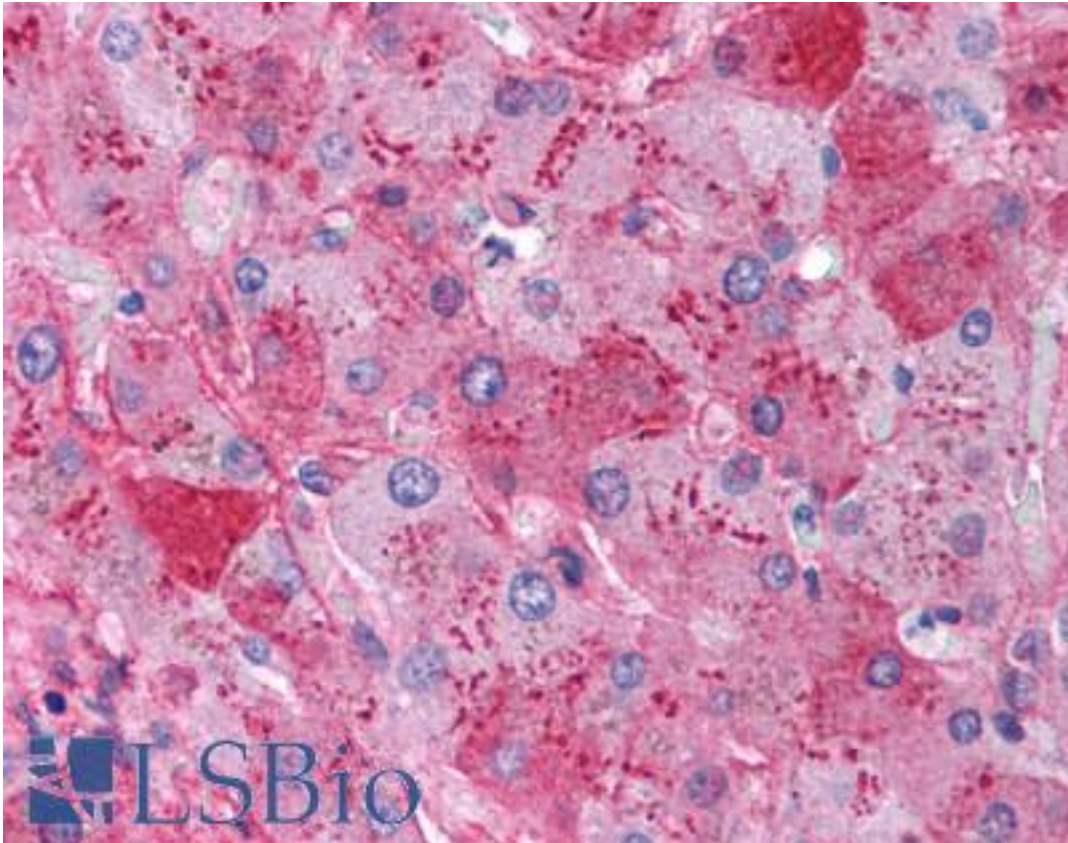
Fibrinogen Goat anti-Human Polyclonal Antibody - LS-B697 - LSBio	
CatalogID:	LS-B697
Validation:	This antibody replaces catalog number LS-C18803. It has been validated for use in the following assays: IHC.
Target:	Fibrinogen
Host	Fibrinogen antibody was produced in Goat
Clonality:	Polyclonal
Immunogen Species:	Fibrinogen antibody was raised against Human
Antigen Type:	Purified protein
Immunogen:	Fibrinogen antibody was raised against fibrinogen purified from human plasma.
Specificity:	Fibrinogen [Human Plasma].
Reactivity:	Human
Purification:	Purified IgG
Presentation:	0.02 M Potassium Phosphate, 0.15 M Sodium Chloride, pH 7.2 with 0.01% (w/v) Sodium Azide
Recommended Storage:	+4°C or -20°C, Avoid repeated freezing and thawing.
Usage Summary:	Immunohistochemistry: LS-B697 was validated for use in immunohistochemistry on a panel of 21 formalin-fixed, paraffin-embedded (FFPE) human tissues after heat induced antigen retrieval in pH 6.0 citrate buffer. After incubation with the primary antibody, slides were incubated with biotinylated secondary antibody, followed by alkaline phosphatase-streptavidin and chromogen. The stained slides were evaluated by a pathologist to confirm staining specificity. The optimal working concentration for LS-B697 was determined to be 2.5 ug/ml.
Uses:	IHC - Paraffin (2.5 ug/ml), Immunofluorescence, Western blot, Immunoprecipitation, ELISA (Optimal dilution to be determined by the researcher)
Size:	50 µl
Concentration:	10 mg/ml

Immunohistochemistry Image:



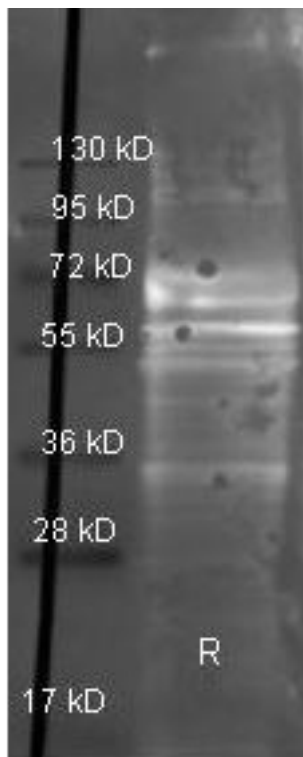
Anti-Fibrinogen antibody IHC of human kidney. Immunohistochemistry of formalin-fixed, paraffin-embedded tissue after heat-induced antigen retrieval. Antibody LS-B697 concentration 5 ug/ml.

Immunohistochemistry Image:



Anti-Fibrinogen antibody IHC of human liver. Immunohistochemistry of formalin-fixed, paraffin-embedded tissue after heat-induced antigen retrieval. Antibody LS-B697 concentration 5 ug/ml.

Western Blot Image:



Fibrinogen Polyclonal Antibody-Western blot. Goat anti-Fibrinogen antibody (LS-B381 lot 8115) was used to detect Fibrinogen under reducing (R) and non-reducing (NR) conditions. Reduced samples of purified target proteins contained 4% BME and were boiled for 5 minutes. Samples of ~1 ug of protein per lane were run by SDS-PAGE. Protein was transferred to nitrocellulose and probed with 1:3000 dilution of primary antibody (ON 4 C in MB-070). Detection shown was using Dylight 488 conjugated Donkey anti-goat (1:10K in TBS/MB-070 1 hr RT). Images were collected using the BioRad VersaDoc System.

Requested From:

Japan

Laboratory Reagent For In Vitro Research Use Only

Not for resale without prior written consent from LifeSpan BioSciences, Inc.

Created on 9/24/2014

© 2014 LifeSpan BioSciences