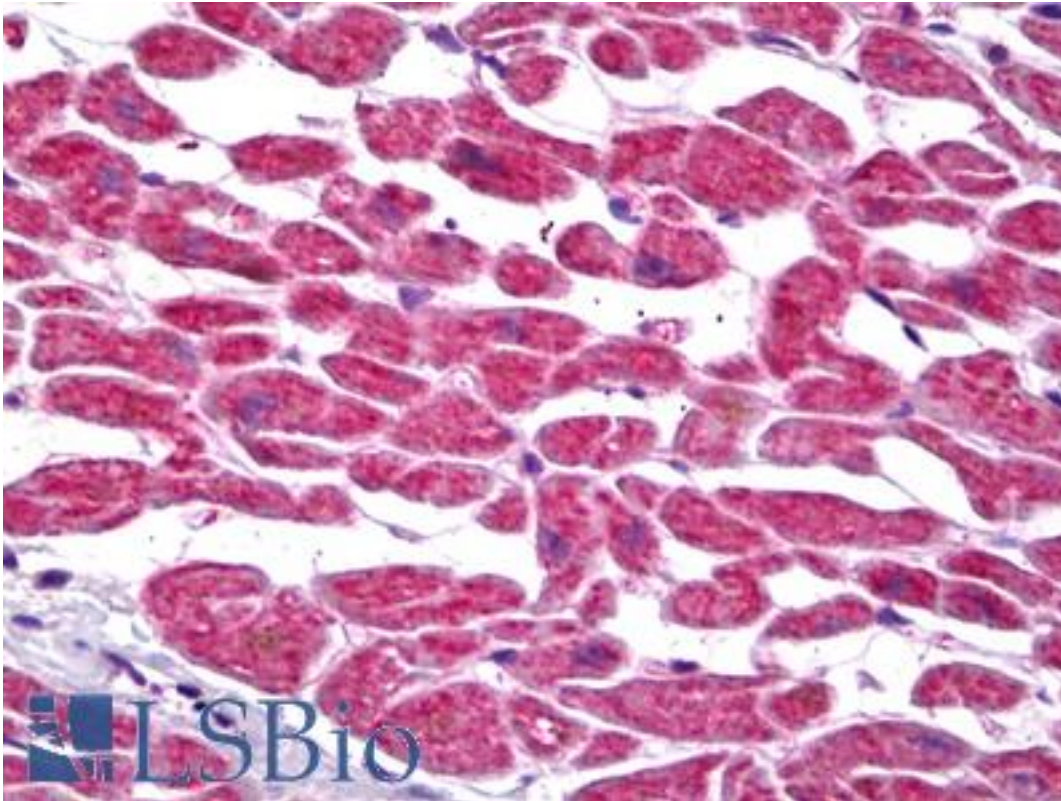


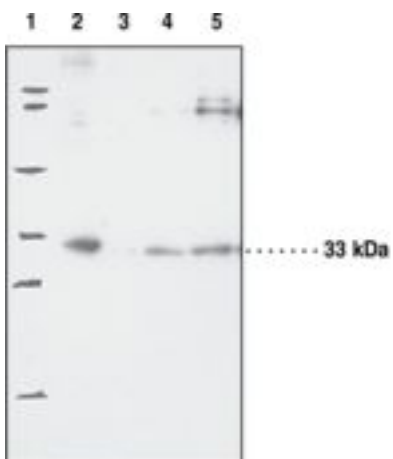
PTGES2 Rabbit anti-Human Polyclonal Antibody - LS-B6962 - LSBio	
<b>CatalogID:</b>	LS-B6962
<b>Validation:</b>	This antibody replaces catalog number LS-C146672. It has been validated for use in the following assays: IHC-P.
<b>Target:</b>	prostaglandin E synthase 2 (PTGES2)
<b>Synonyms:</b>	PTGES2 Antibody, C9orf15 Antibody, GATE-binding factor 1 Antibody, GBF-1 Antibody, MPGES-2 Antibody, PGES2 Antibody, Prostaglandin E synthase 2 Antibody
<b>Host</b>	PTGES2 antibody was produced in Rabbit
<b>Clonality:</b>	Polyclonal
<b>Isotype:</b>	IgG
<b>Immunogen Species:</b>	PTGES2 antibody was raised against Human
<b>Antigen Type:</b>	Synthetic peptide - KLH conjugated
<b>Immunogen:</b>	PTGES2 antibody was raised against synthetic peptide from the human mPGES-2 sequence conjugated to KLH amino acids 221-235 (VYGGKEARTEEMKWR)
<b>Specificity:</b>	Does not cross react with mPGES-1 or cPGES.
<b>Reactivity:</b>	Human, Mouse, Rat, Bovine, Sheep
<b>Purification:</b>	Affinity purified
<b>Reconstitution:</b>	500ul sterile ddH2O. Possible additional volumes for resuspension: 100 µl
<b>Presentation:</b>	TBS, pH 7.4, containing BSA and 0.02% sodium azide
<b>Recommended Storage:</b>	Short term 4°C, long term aliquot and store at -20°C, avoid freeze thaw cycles.
<b>Usage Summary:</b>	Western Blot, 0.1 µg/ml, Recombinant Mouse SOST/Sclerostin. Immunohistochemistry, 5-15 µg/ml.
<b>Uses:</b>	IHC - Paraffin (5 µg/ml), Western blot (1:200) (Optimal dilution to be determined by the researcher)
<b>Size:</b>	100 µl
<b>Concentration:</b>	0.4 mg/ml (after resuspension)

**Immunohistochemistry Image:**



Anti-PTGES2 antibody IHC of human heart. Immunohistochemistry of formalin-fixed, paraffin-embedded tissue after heat-induced antigen retrieval. Antibody LS-B6962 concentration 5 ug/ml.

**Western Blot Image:**



Lane 1: Protein MW standards  
Lane 2: Murine heart homogenate (30 µg)  
Lane 3: Bovine aorta homogenate (30 µg)  
Lane 4: Ram seminal vesicle microsomes (30 µg)  
Lane 5: Cos-7 cell lysate (10 µg)

Western blot of PTGES2 antibody LS-B6962.

Requested From:

Japan

Laboratory Reagent For In Vitro Research Use Only

Not for resale without prior written consent from LifeSpan BioSciences, Inc.

Created on 9/24/2014

© 2014 LifeSpan BioSciences