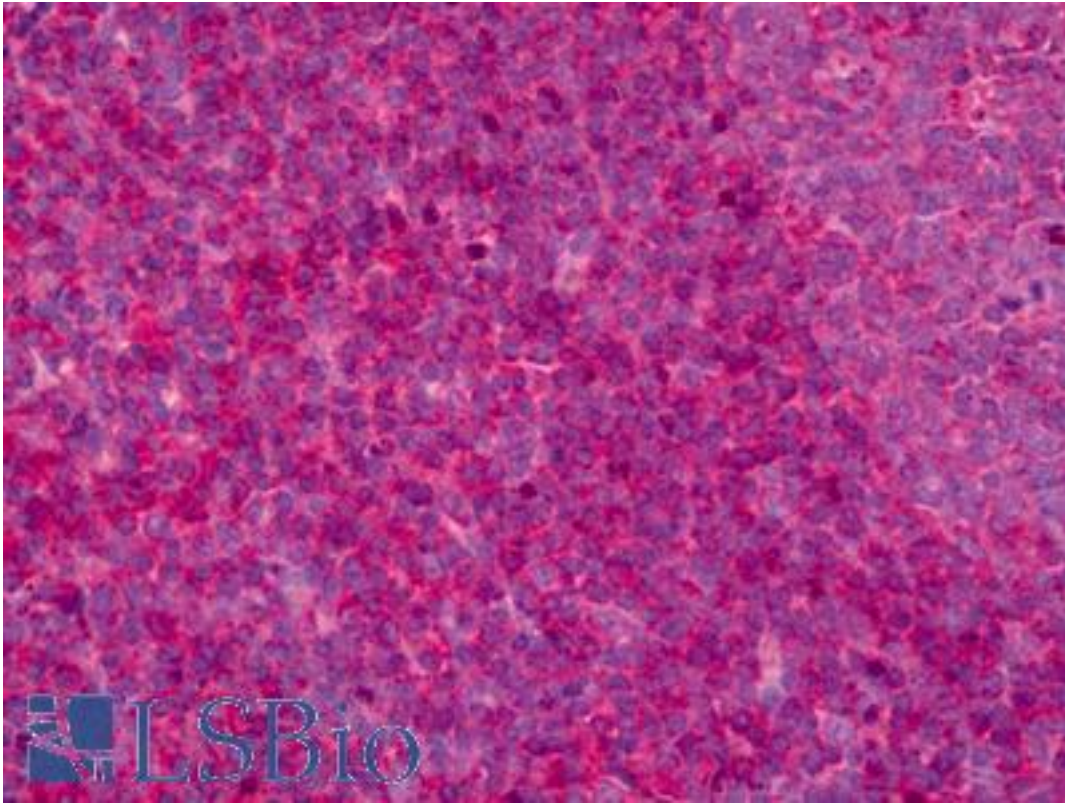


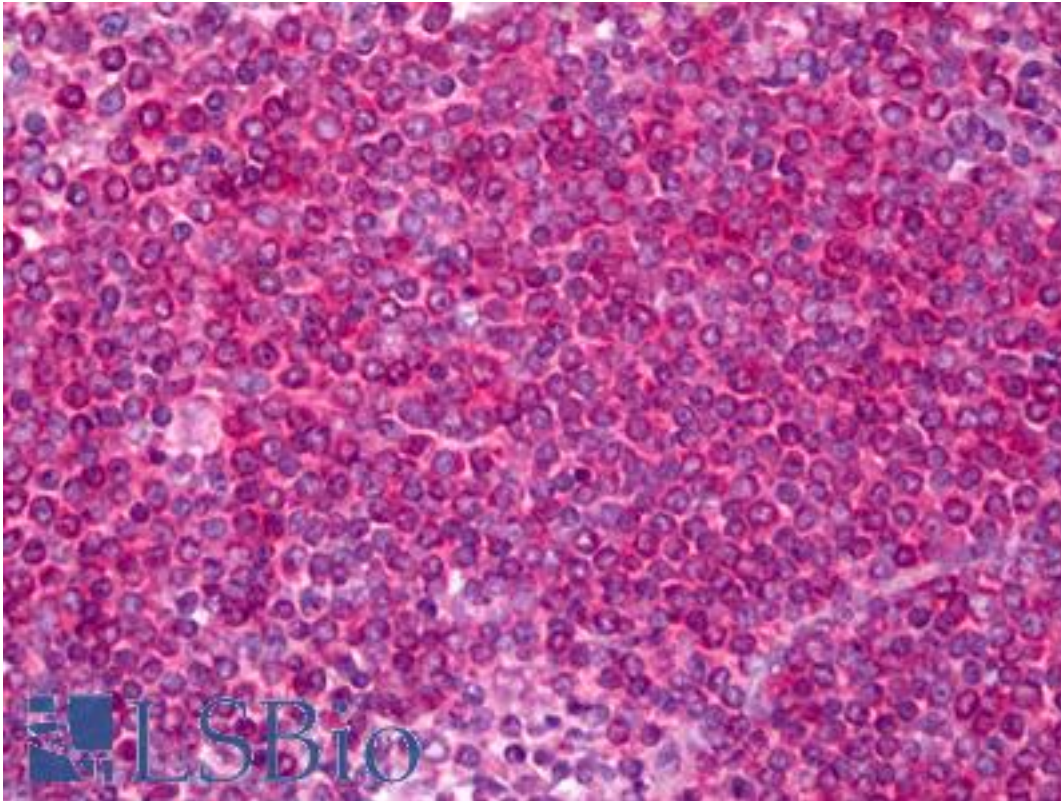
Leukotriene B4 Receptor / BLT1 Rabbit anti-Human Polyclonal Antibody - LS-B6953 - LSBio	
CatalogID:	LS-B6953
Validation:	This antibody replaces catalog number LS-C146663. It has been validated for use in the following assays: IHC-P.
Target:	leukotriene B4 receptor (LTB4R)
Synonyms:	LTB4R Antibody, BLT Antibody, BLT1 Antibody, BLTR Antibody, Blt-1 Antibody, Chemokine receptor-like 1 Antibody, G protein-coupled receptor 16 Antibody, GPR16 Antibody, Leukotriene B4 receptor Antibody, Leukotriene B4 receptor 1 Antibody, G-protein coupled receptor 16 Antibody, LTBR1 Antibody, p2Y purinoceptor 7 Antibody, p2Y7 Antibody, LTB4-R 1 Antibody, p2RY7 Antibody, CMKRL1 Antibody, LTB4-R1 Antibody, LTB4R1 Antibody
Family / Subfamily:	GPCR / Chemoattractant
Host	LTB4R antibody was produced in Rabbit
Clonality:	Polyclonal
Isotype:	IgG
Immunogen Species:	Leukotriene B4 Receptor / BLT1 antibody was raised against Human
Immunogen:	Leukotriene B4 Receptor / BLT1 antibody was raised against human BLT1 receptor amino acids 331-352 (ALEPGPSESLTASSPLKLNELN).
Reactivity:	Human
Predicted Reactivity:	Gorilla, Gibbon, Monkey
Non-Reactivity:	Mouse
Purification:	Affinity purified
Presentation:	TBS pH 7.4, containing 50% glycerol, 0.5 mg/ml BSA, and 0.02% sodium azide
Recommended Storage:	Short term 4°C, long term aliquot and store at -20°C, avoid freeze thaw cycles.
Uses:	IHC - Paraffin (5 µg/ml), ICC, Western blot (1:200) (Optimal dilution to be determined by the researcher)
Size:	100 µl
Concentration:	1 mg/ml

Immunohistochemistry Image:



Anti-Leukotriene B4 Receptor antibody IHC of human tonsil. Immunohistochemistry of formalin-fixed, paraffin-embedded tissue after heat-induced antigen retrieval. Antibody LS-B6953 concentration 5 ug/ml.

Immunohistochemistry Image:



Anti-Leukotriene B4 Receptor antibody IHC of human spleen. Immunohistochemistry of formalin-fixed, paraffin-embedded tissue after heat-induced antigen retrieval. Antibody LS-B6953 concentration 5 ug/ml.

Western Blot Image:



Lane 1: CHO lysate (30 µg)
Lane 2: LTB₄ receptor transfected CHO cell lysate (30 µg)
Lane 3: U937 cell lysate (50 µg)
Lane 4: Bovine lung membrane (100 µg)

Western blot of Leukotriene B4 Receptor / BLT1 antibody LS-B6953.

Requested From:	Japan
Laboratory Reagent For In Vitro Research Use Only	
Not for resale without prior written consent from LifeSpan BioSciences, Inc.	
Created on 9/24/2014	
© 2014 LifeSpan BioSciences	