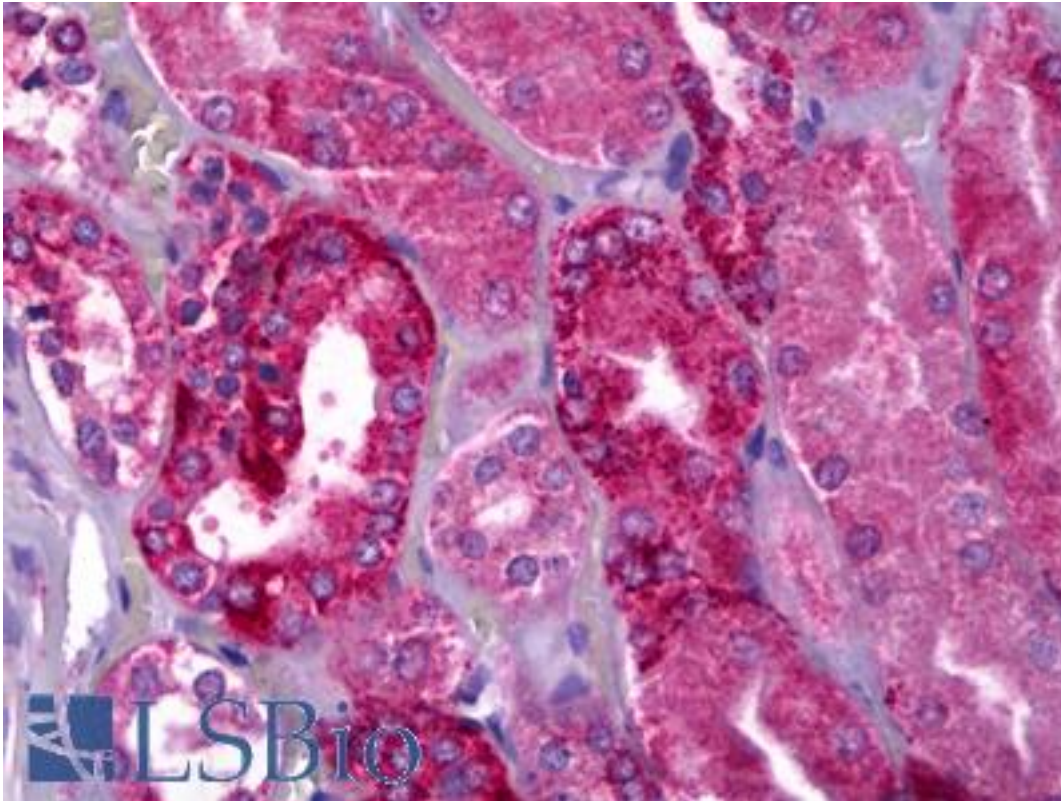


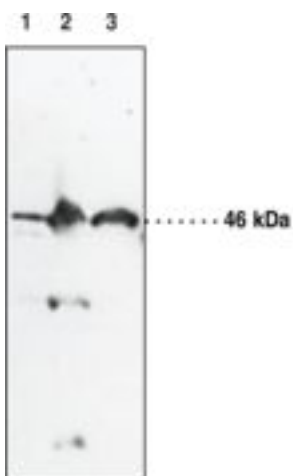
NAPE-PLD Rabbit anti-Human Polyclonal Antibody - LS-B6951 - LSBio	
<b>CatalogID:</b>	LS-B6951
<b>Validation:</b>	This antibody replaces catalog number LS-C146651. It has been validated for use in the following assays: IHC-P.
<b>Target:</b>	N-acyl phosphatidylethanolamine phospholipase D (NAPEPLD)
<b>Synonyms:</b>	NAPEPLD Antibody, C7orf18 Antibody, FMP30 Antibody, NAPE-PLD Antibody
<b>Host</b>	NAPEPLD antibody was produced in Rabbit
<b>Clonality:</b>	Polyclonal
<b>Isotype:</b>	IgG
<b>Immunogen Species:</b>	NAPE-PLD antibody was raised against Human
<b>Immunogen:</b>	NAPE-PLD antibody was raised against human NAPE-PLD amino acids 6-20 (SNQSLMTSSQYPKEA)
<b>Reactivity:</b>	Human, Mouse, Rat, Bovine
<b>Purification:</b>	Affinity purified
<b>Presentation:</b>	TBS pH 7.4, containing 50% glycerol, 0.1% BSA, and 0.02% sodium azide
<b>Recommended Storage:</b>	Short term 4°C, long term aliquot and store at -20°C, avoid freeze thaw cycles.
<b>Uses:</b>	IHC - Paraffin (5 µg/ml), Western blot (1:200) (Optimal dilution to be determined by the researcher)
<b>Size:</b>	100 µl
<b>Concentration:</b>	0.6 mg/ml

**Immunohistochemistry Image:**



Anti-NAPE-PLD antibody IHC of human kidney. Immunohistochemistry of formalin-fixed, paraffin-embedded tissue after heat-induced antigen retrieval. Antibody LS-B6951 concentration 5 ug/ml.

**Western Blot Image:**



Lane 1: Human Cerebellum Supernatant (30 µg)  
Lane 2: Mouse Brain Homogenate (50 µg)  
Lane 3: Mouse Brain High-Density Membrane (30 µg)

Western blot of NAPE-PLD antibody LS-B6951.

**Requested From:**

Japan

Laboratory Reagent For In Vitro Research Use Only

Not for resale without prior written consent from LifeSpan BioSciences, Inc.

Created on 9/24/2014

© 2014 LifeSpan BioSciences