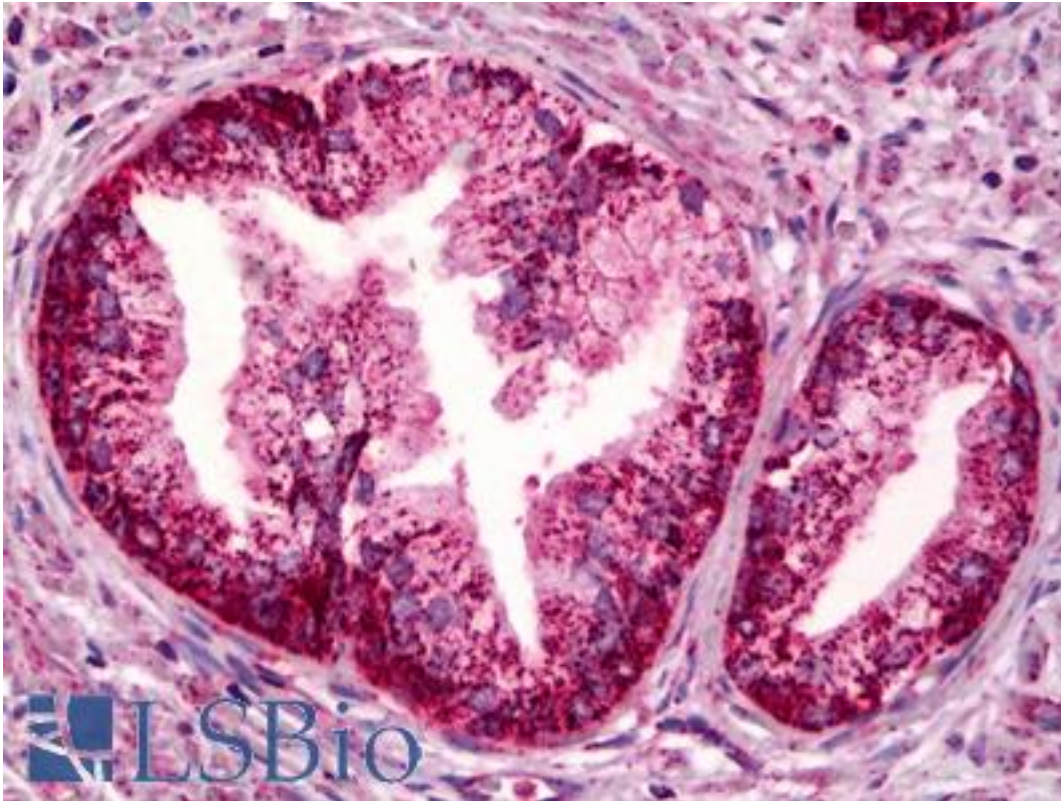


PTGER4 / EP4 Rabbit anti-Human Polyclonal Antibody - LS-B6947 - LSBio

CatalogID:	LS-B6947
Validation:	This antibody replaces catalog number LS-C146661. It has been validated for use in the following assays: IHC-P.
Target:	prostaglandin E receptor 4 (subtype EP4) (PTGER4)
Synonyms:	PTGER4 Antibody, EP4 Antibody, EP4 prostaglandin receptor Antibody, EP4R Antibody, PGE receptor EP4 subtype Antibody, Prostanoid EP4 receptor Antibody, Prostaglandin E receptor 4 Antibody, PGE receptor, EP4 subtype Antibody, PGE2 receptor EP4 subtype Antibody
Family / Subfamily:	GPCR / Prostanoid
Host	PTGER4 antibody was produced in Rabbit
Clonality:	Polyclonal
Isotype:	IgG
Immunogen Species:	PTGER4 / EP4 antibody was raised against Human
Immunogen:	PTGER4 / EP4 antibody was raised against human EP4 receptor C-terminal amino acids 459-488 (GSGRAGPAPKGSSSLQVTFPSETLNLSEKCI). Percent identity by BLAST analysis: Human, Chimpanzee, Gorilla, Monkey (100%); Gibbon, Bovine (97%); Rabbit (93%); Marmoset (90%); Bat, Hamster, Elephant, Panda (87%); Horse (83%); Mouse, Rat (80%).
Specificity:	Does not cross-react with EP1, EP3, or EP4 receptors. The EP2 receptor appears to be expressed at low levels in many tissues and cell types, potentially making detection by immunochemical techniques difficult.
Reactivity:	Human, Chimpanzee, Gorilla
Predicted Reactivity:	Gibbon, Monkey, Bovine, Rabbit
Purification:	Affinity purified
Presentation:	TBS, pH 7.4, 0.02% sodium azide, 0.5 mg/ml BSA, 50% glycerol.
Recommended Storage:	Short term 4°C, long term aliquot and store at -20°C, avoid freeze thaw cycles.
Uses:	IHC - Paraffin (5 µg/ml), ICC, Western blot (1:200) (Optimal dilution to be determined by the researcher)
Size:	250 µl
Concentration:	0.4 mg/ml

Immunohistochemistry Image:



Anti-PTGER4 / EP4 antibody IHC of human prostate. Immunohistochemistry of formalin-fixed, paraffin-embedded tissue after heat-induced antigen retrieval. Antibody LS-B6947 concentration 5 ug/ml.

Western Blot Image:



Lane 1: EP₄ transfected cell microsomes (5 µg)

Lane 2: Human Jurkat lysate (30 µg)

Western blot of PTGER4 / EP4 antibody LS-B6947.

Requested From:

Japan

Laboratory Reagent For In Vitro Research Use Only

Not for resale without prior written consent from LifeSpan BioSciences, Inc.

Created on 9/24/2014

© 2014 LifeSpan BioSciences