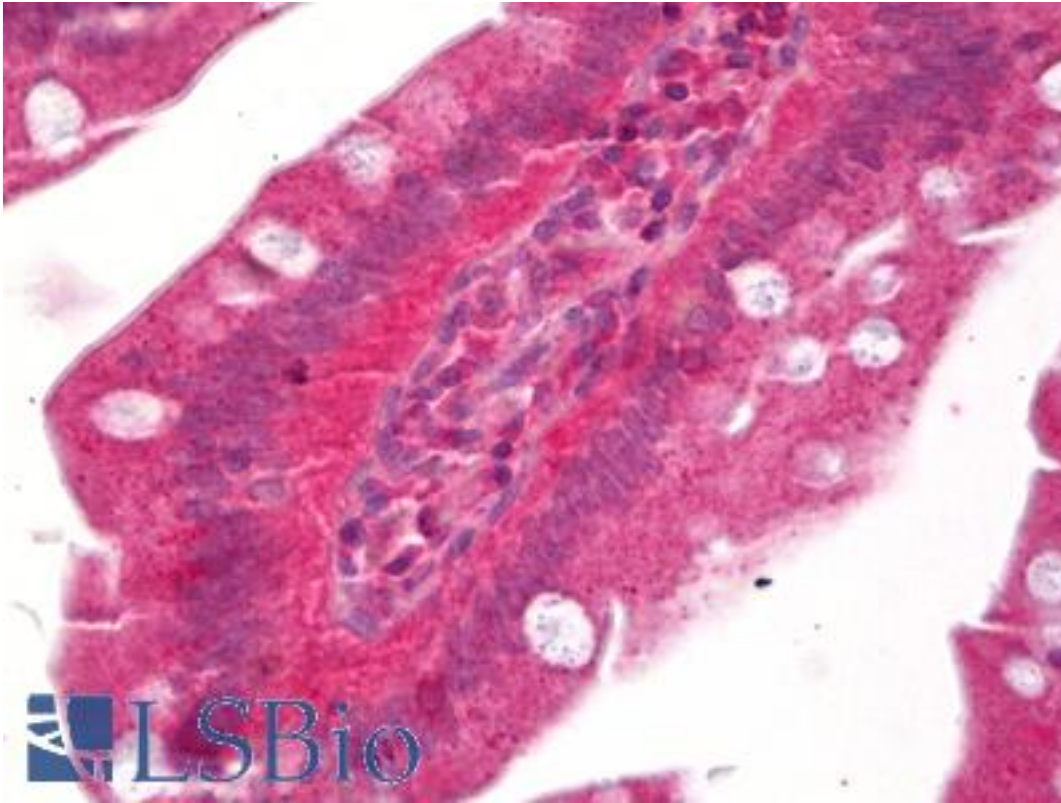


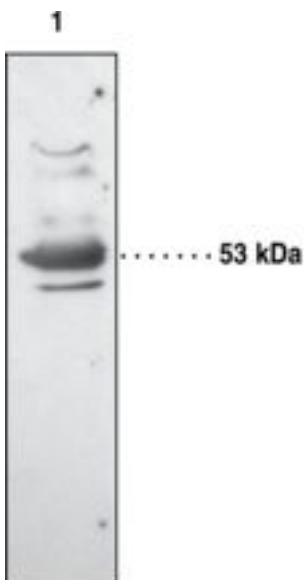
PTGER3 / EP3 Rabbit anti-Human Polyclonal Antibody - LS-B6944 - LSBio	
<b>CatalogID:</b>	LS-B6944
<b>Validation:</b>	This antibody replaces catalog number LS-C146660. It has been validated for use in the following assays: IHC-P.
<b>Target:</b>	prostaglandin E receptor 3 (subtype EP3) (PTGER3)
<b>Synonyms:</b>	PTGER3 Antibody, Ep3 prostanoid receptor Antibody, Ep3 receptor Antibody, EP3-I Antibody, EP3e Antibody, EP3-II Antibody, EP3-III Antibody, EP3-IV Antibody, PGE receptor, EP3 subtype Antibody, Prostaglandin receptor (PGE-2) Antibody, Prostaglandin ep3 receptor Antibody, Prostanoid EP3 receptor Antibody, PGE receptor EP3 subtype Antibody, Pge2 receptor ep3 Antibody, PGE2 receptor EP3 subtype Antibody, Prostaglandin E receptor 3 Antibody, Prostaglandin e2 receptor ep3 Antibody, EP3 Antibody, Ep3 subtype pge2 receptor Antibody, PGE2-R Antibody, Prostaglandin E receptor EP3 Antibody
<b>Family / Subfamily:</b>	GPCR / Prostanoid
<b>Host</b>	PTGER3 antibody was produced in Rabbit
<b>Clonality:</b>	Polyclonal
<b>Isotype:</b>	IgG
<b>Immunogen Species:</b>	PTGER3 / EP3 antibody was raised against Human
<b>Immunogen:</b>	PTGER3 / EP3 antibody was raised against human EP3 receptor amino acids 308-327 (NQTSVEHCKTHTEKQKECNF). Percent identity by BLAST analysis: Human, Gorilla, Gibbon, Marmoset (100%); Monkey, Bat, Panda, Horse (95%); Rabbit (90%); Elephant (85%); Bovine, Pig (80%).
<b>Specificity:</b>	The EP3 receptor appears to be expressed at low levels in many tissues and cell types, potentially making detection by immunochemical techniques difficult. Does not cross react with EP1, EP2 and EP4 receptors.
<b>Reactivity:</b>	Human, Gorilla, Gibbon
<b>Predicted Reactivity:</b>	Monkey, Bat, Horse, Rabbit
<b>Purification:</b>	Affinity purified
<b>Presentation:</b>	TBS pH 7.4, containing 50% glycerol, 0.5 mg/ml BSA, and 0.02% sodium azide
<b>Recommended Storage:</b>	Short term 4°C, long term aliquot and store at -20°C, avoid freeze thaw cycles.
<b>Uses:</b>	IHC - Paraffin (5 µg/ml), ICC (1 - 2 µg/ml), Western blot (1 - 2 µg/ml) (Optimal dilution to be determined by the researcher)
<b>Size:</b>	100 µl
<b>Concentration:</b>	0.4 mg/ml

**Immunohistochemistry Image:**



Anti-PTGER3 / EP3 antibody IHC of human small intestine. Immunohistochemistry of formalin-fixed, paraffin-embedded tissue after heat-induced antigen retrieval. Antibody LS-B6944 concentration 5 ug/ml.

**Western Blot Image:**



**Lane 1: Rat sensory neuron (20 µg)**

Western blot of PTGER3 / EP3 antibody LS-B6944.

**Requested From:**

Japan

Laboratory Reagent For In Vitro Research Use Only

Not for resale without prior written consent from LifeSpan BioSciences, Inc.

Created on 9/24/2014

© 2014 LifeSpan BioSciences