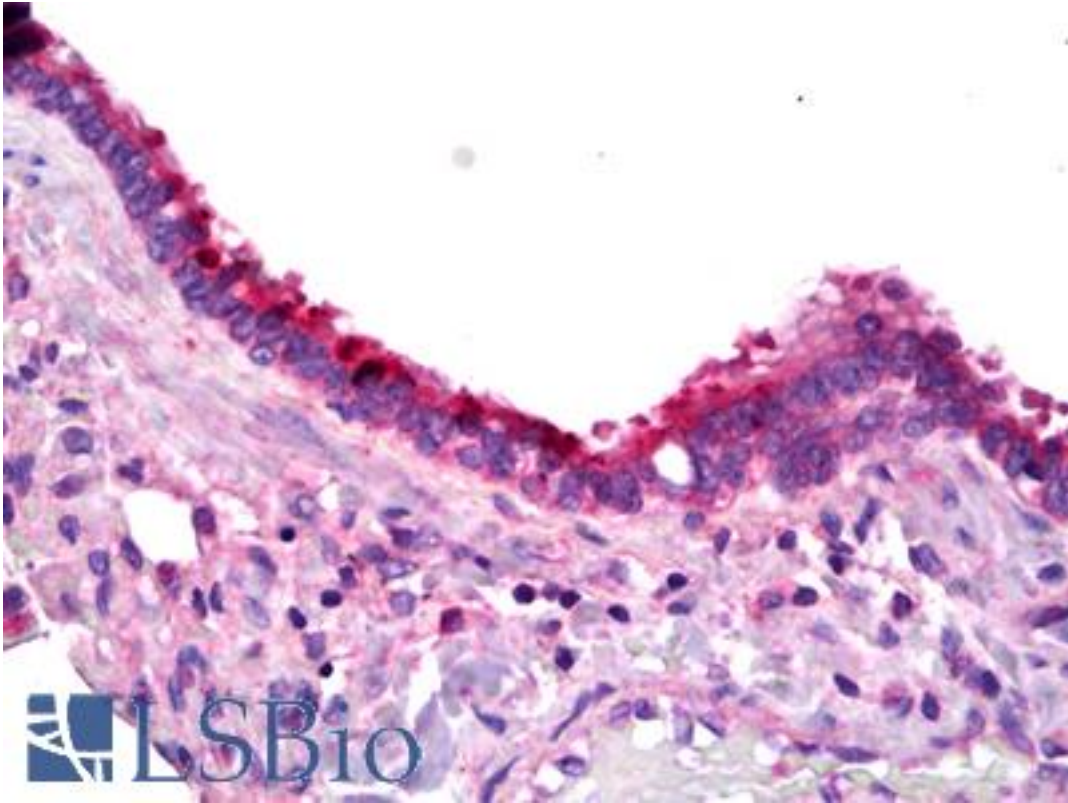


**PTGER1 / EP1 Rabbit anti-Human Polyclonal Antibody - LS-B6942 - LSBio**

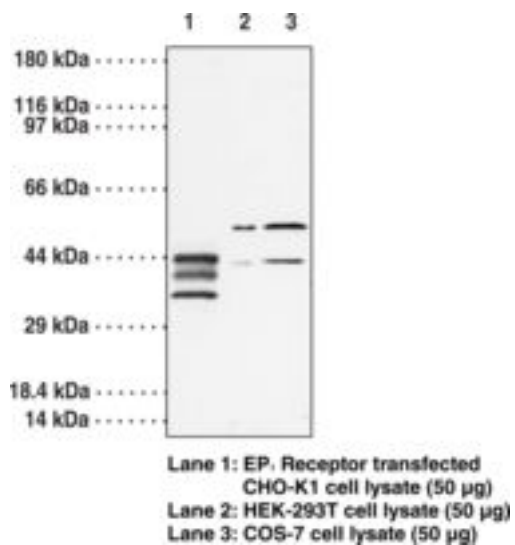
<b>CatalogID:</b>	LS-B6942
<b>Validation:</b>	This antibody replaces catalog number LS-C146658. It has been validated for use in the following assays: IHC-P.
<b>Target:</b>	prostaglandin E receptor 1 (subtype EP1), 42kDa (PTGER1)
<b>Synonyms:</b>	PTGER1 Antibody, EP1 prostaglandin receptor Antibody, PGE receptor EP1 subtype Antibody, Prostaglandin E receptor 1 Antibody, EP1 Antibody, PGE receptor, EP1 subtype Antibody, PGE2 receptor EP1 subtype Antibody, Prostanoid EP1 receptor Antibody
<b>Family / Subfamily:</b>	GPCR / Prostanoid
<b>Host</b>	PTGER1 antibody was produced in Rabbit
<b>Clonality:</b>	Polyclonal
<b>Isotype:</b>	IgG
<b>Immunogen Species:</b>	PTGER1 / EP1 antibody was raised against Human
<b>Immunogen:</b>	PTGER1 / EP1 antibody was raised against human EP1 receptor C-terminal amino acids 380-402 (GLTPSAWEASSLRSSRHGSLSHF). Percent identity by BLAST analysis: Human, Gibbon, Monkey (100%); Gorilla, Marmoset (96%); Bat, Pig (91%); Mouse (87%); Rat, Bovine, Dog, Hamster, Elephant, Panda (83%).
<b>Specificity:</b>	The EP1 receptor appears to be expressed at low levels in many tissues and cell types, potentially making detection by immunochemical techniques difficult. Does not cross react with EP2, EP3 and EP4 receptors.
<b>Reactivity:</b>	Human, Gibbon
<b>Predicted Reactivity:</b>	Gorilla, Monkey, Bat, Pig
<b>Purification:</b>	Affinity purified
<b>Presentation:</b>	TBS, pH 7.4, 5 mg/ml BSA
<b>Recommended Storage:</b>	Short term 4°C, long term aliquot and store at -20°C, avoid freeze thaw cycles.
<b>Uses:</b>	IHC - Paraffin (5 µg/ml), ICC, Western blot (1:200) (Optimal dilution to be determined by the researcher)
<b>Size:</b>	100 µl

**Immunohistochemistry Image:**



Anti-PTGER1 / EP1 antibody IHC of human lung, respiratory epithelium.  
Immunohistochemistry of formalin-fixed, paraffin-embedded tissue after heat-induced antigen retrieval. Antibody LS-B6942 concentration 5 ug/ml.

**Western Blot Image:**



Western blot of PTGER1 / EP1 antibody LS-B6942.

Requested From:

Japan

Laboratory Reagent For In Vitro Research Use Only

Not for resale without prior written consent from LifeSpan BioSciences, Inc.

Created on 9/24/2014

© 2014 LifeSpan BioSciences