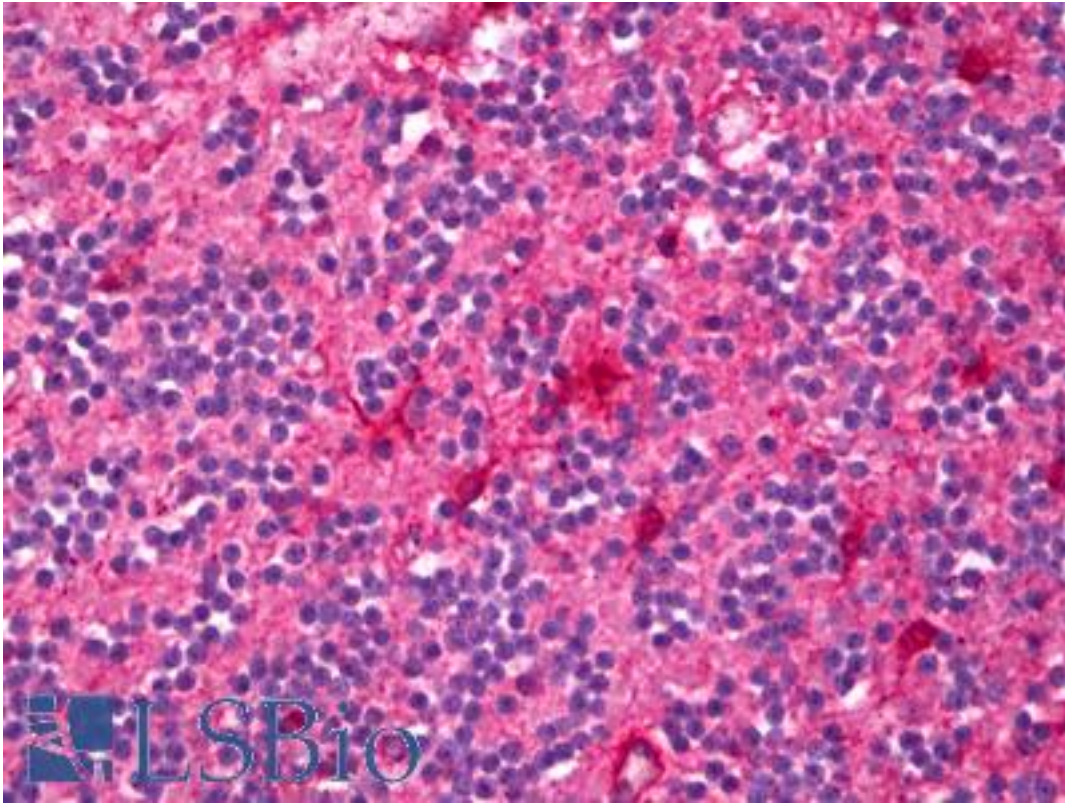


ENPP2 / Autotaxin Rabbit anti-Rat Polyclonal Antibody - LS-B6936 - LSBio

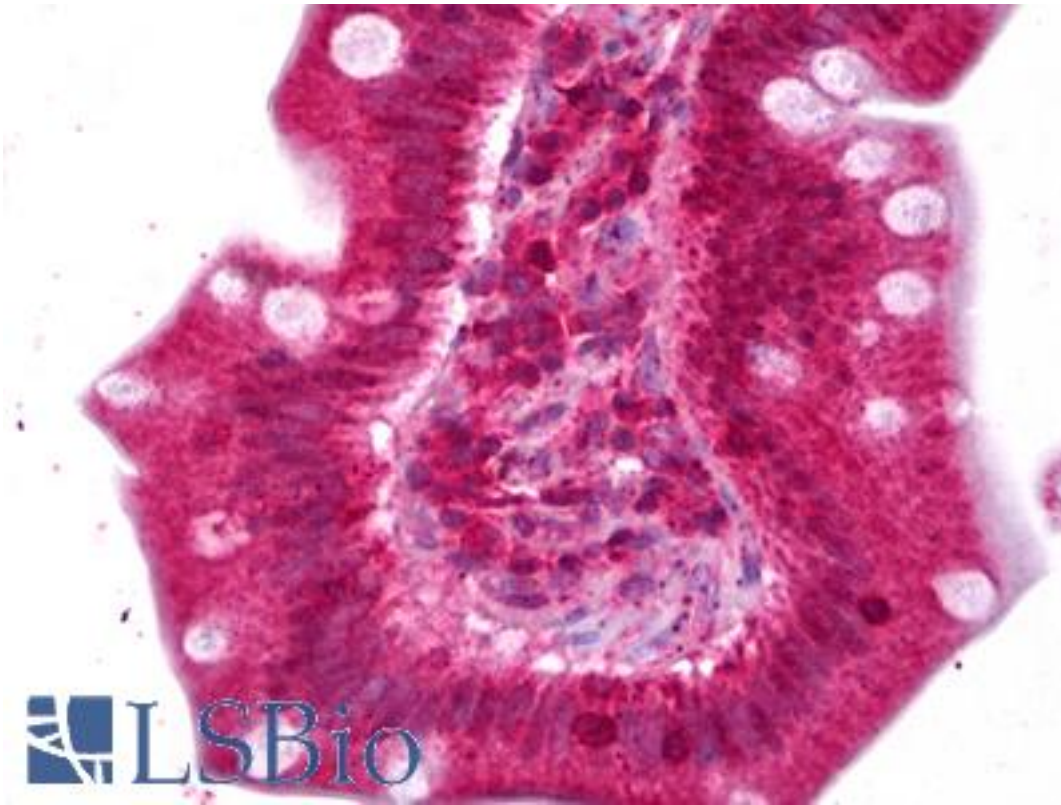
CatalogID:	LS-B6936
Validation:	This antibody replaces catalog number LS-C146682. It has been validated for use in the following assays: IHC-P.
Target:	ectonucleotide pyrophosphatase/phosphodiesterase 2 (ENPP2)
Synonyms:	ENPP2 Antibody, AUTOTAXIN Antibody, Autotaxin-t Antibody, ATX-X Antibody, E-NPP 2 Antibody, LysoPLD Antibody, NPP2 Antibody, PDNP2 Antibody, PD-IALPHA Antibody, Plasma lysophospholipase D Antibody, Phosphodiesterase I alpha Antibody
Family / Subfamily:	Phosphodiesterase - Other / not assigned-Phosphodiesterase - Other
Host	ENPP2 antibody was produced in Rabbit
Clonality:	Polyclonal
Isotype:	IgG
Immunogen Species:	ENPP2 / Autotaxin antibody was raised against Rat
Immunogen:	ENPP2 / Autotaxin antibody was raised against rat lysophospholipase D (lysoPLD) amino acids 573-588 (KNKLEELNKRLHTKGS). Percent identity by BLAST analysis: Mouse, Rat (100%); Human, Gorilla, Orangutan, Gibbon, Monkey, Marmoset, Hamster, Rabbit, Pig (94%); Bat, Horse (88%); Dog, Panda, Opossum (81%).
Reactivity:	Rat, Human, Mouse
Predicted Reactivity:	Gorilla, Orangutan, Gibbon, Monkey, Hamster, Pig, Rabbit
Purification:	Affinity purified
Presentation:	TBS, pH 7.4
Recommended Storage:	Long term: -20°C; Short term: +4°C. Avoid repeat freeze-thaw cycles.
Usage Summary:	Useful positive controls include cerebrospinal fluid, mouse ascites or seminal plasma.
Uses:	IHC - Paraffin (2.5 µg/ml), ICC (2 µg/ml), Western blot (5 µg/ml) (Optimal dilution to be determined by the researcher)
Size:	100 µl
Concentration:	1 mg/ml

Immunohistochemistry Image:



Anti-ENPP2 / Autotaxin antibody IHC of human brain, cerebellum. Immunohistochemistry of formalin-fixed, paraffin-embedded tissue after heat-induced antigen retrieval. Antibody LS-B6936 concentration 2.5 ug/ml.

Immunohistochemistry Image:



Anti-ENPP2 / Autotaxin antibody IHC of human small intestine. Immunohistochemistry of formalin-fixed, paraffin-embedded tissue after heat-induced antigen retrieval. Antibody LS-B6936 concentration 2.5 ug/ml.

Requested From:

Japan

Laboratory Reagent For In Vitro Research Use Only

Not for resale without prior written consent from LifeSpan BioSciences, Inc.

Created on 9/24/2014

© 2014 LifeSpan BioSciences