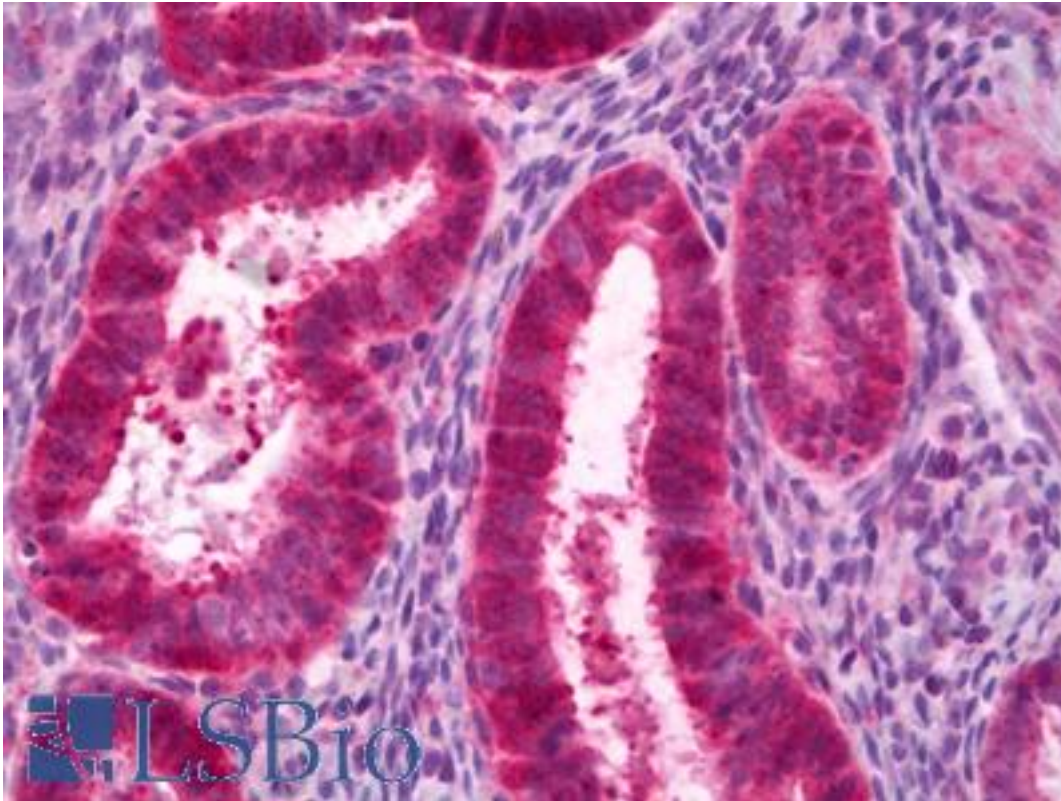


**PCK1 Rabbit anti-Mouse Polyclonal Antibody - LS-B6935 - LSBio**

<b>CatalogID:</b>	LS-B6935
<b>Validation:</b>	This antibody replaces catalog number LS-C146681. It has been validated for use in the following assays: IHC-P.
<b>Target:</b>	phosphoenolpyruvate carboxykinase 1 (soluble) (PCK1)
<b>Synonyms:</b>	PCK1 Antibody, PEPCKC Antibody, Phosphopyruvate carboxylase Antibody, PEP carboxykinase Antibody, PEPCK-C Antibody, PEPCK1 Antibody
<b>Host</b>	PCK1 antibody was produced in Rabbit
<b>Clonality:</b>	Polyclonal
<b>Isotype:</b>	IgG
<b>Immunogen Species:</b>	PCK1 antibody was raised against Mouse
<b>Immunogen:</b>	PCK1 antibody was raised against mouse and rat PEPCK protein amino acids 5-17 (LHNGLDLDFSAKVIQ). Percent identity by BLAST analysis: Mouse, Rat, Hamster (100%); Dog, Panda (85%).
<b>Specificity:</b>	Detects the protein at 63 kDa.
<b>Reactivity:</b>	Mouse, Human, Rat, Hamster
<b>Purification:</b>	Affinity purified
<b>Presentation:</b>	TBS pH 7.4, containing 50% glycerol, 0.5 mg/ml BSA, and 0.02% sodium azide
<b>Recommended Storage:</b>	Short term 4°C, long term aliquot and store at -20°C, avoid freeze thaw cycles.
<b>Uses:</b>	IHC - Paraffin (10 µg/ml), Western blot (1:200) (Optimal dilution to be determined by the researcher)
<b>Size:</b>	100 µl
<b>Concentration:</b>	0.6 mg/ml

**Immunohistochemistry Image:**



Anti-PCK1 antibody IHC of human uterus, endometrium. Immunohistochemistry of formalin-fixed, paraffin-embedded tissue after heat-induced antigen retrieval. Antibody LS-B6935 concentration 10 ug/ml.

**Requested From:**

Japan

Laboratory Reagent For In Vitro Research Use Only

Not for resale without prior written consent from LifeSpan BioSciences, Inc.

Created on 9/24/2014

© 2014 LifeSpan BioSciences