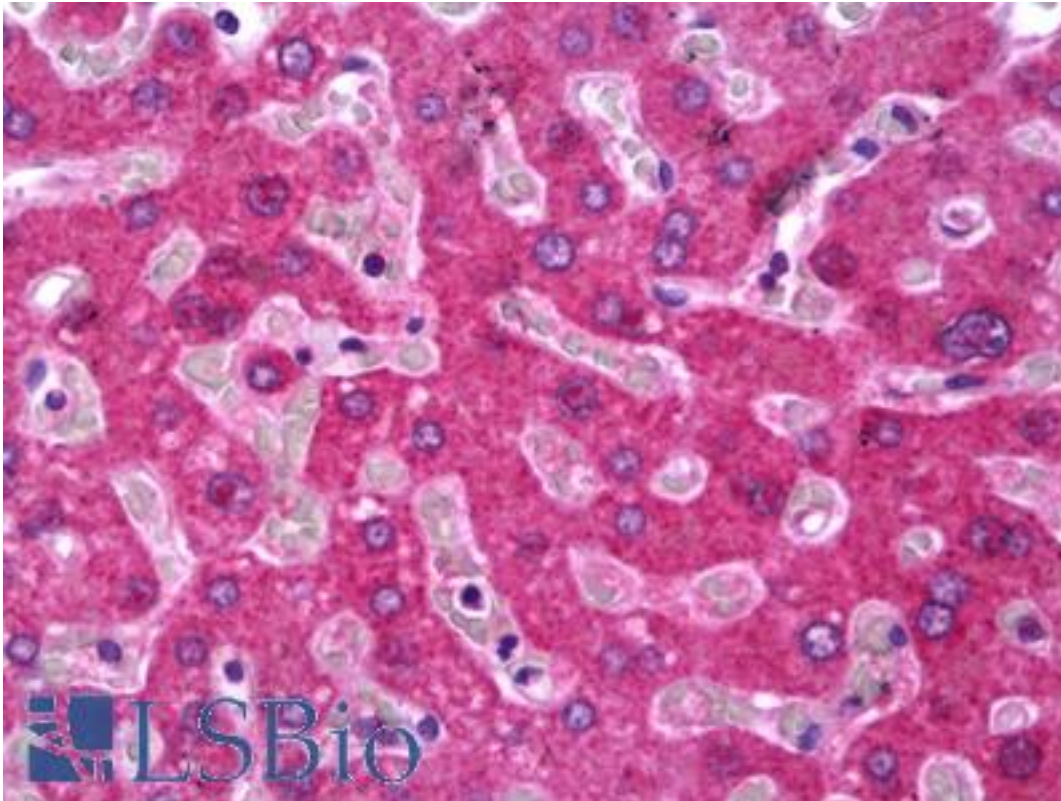


HPN / TMPRSS1 / Hepsin Rabbit anti-Human Polyclonal Antibody - LS-B6933 - LSBio	
<b>CatalogID:</b>	LS-B6933
<b>Validation:</b>	This antibody replaces catalog number LS-C146653. It has been validated for use in the following assays: IHC-P.
<b>Target:</b>	hepsin (HPN)
<b>Synonyms:</b>	HPN Antibody, Hepsin Antibody, TMPRSS1 Antibody, Serine protease hepsin Antibody
<b>Family / Subfamily:</b>	Protease / Serine S1
<b>Host</b>	HPN antibody was produced in Rabbit
<b>Clonality:</b>	Polyclonal
<b>Isotype:</b>	IgG
<b>Immunogen Species:</b>	HPN / TMPRSS1 / Hepsin antibody was raised against Human
<b>Immunogen:</b>	HPN / TMPRSS1 / Hepsin antibody was raised against human hepsin amino acids 241-260 (GGYLPFRDPNSEENSNDIAL). Percent identity by BLAST analysis: Human, Gorilla, Orangutan, Gibbon, Monkey, Marmoset, Bovine, Dog, Bat, Panda, Rabbit (100%); Opossum (95%); Hamster, Horse (90%); Mouse, Rat (85%); Xenopus (80%).
<b>Reactivity:</b>	Human, Gorilla, Orangutan, Gibbon, Monkey, Bat, Bovine, Dog, Rabbit
<b>Predicted Reactivity:</b>	Hamster, Horse
<b>Purification:</b>	Affinity purified
<b>Presentation:</b>	TBS containing 50% glycerol, 0.5 mg/ml BSA, and 0.02% sodium azide
<b>Recommended Storage:</b>	Short term 4°C, long term aliquot and store at -20°C, avoid freeze thaw cycles.
<b>Uses:</b>	IHC - Paraffin (5 µg/ml), Western blot (1 µg/ml) (Optimal dilution to be determined by the researcher)
<b>Size:</b>	100 µl
<b>Concentration:</b>	0.4 mg/ml

**Immunohistochemistry Image:**



Anti-HPN / Hepsin antibody IHC of human liver. Immunohistochemistry of formalin-fixed, paraffin-embedded tissue after heat-induced antigen retrieval. Antibody LS-B6933 concentration 5 ug/ml.

**Requested From:**

Japan

Laboratory Reagent For In Vitro Research Use Only

Not for resale without prior written consent from LifeSpan BioSciences, Inc.

Created on 9/24/2014

© 2014 LifeSpan BioSciences