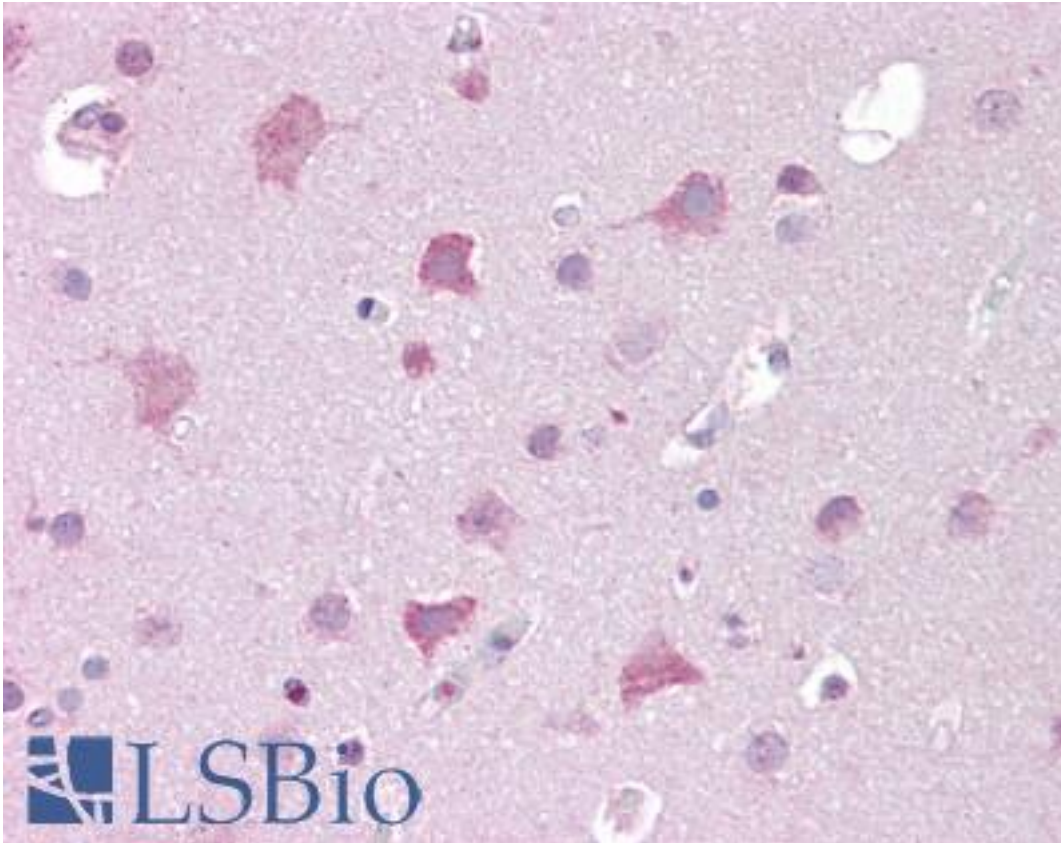


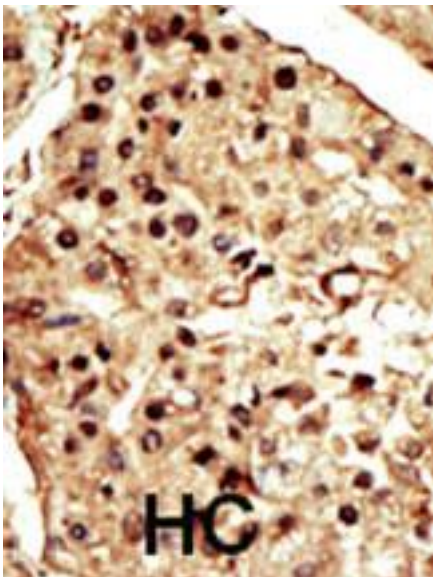
TRPM7 Rabbit anti-Human Polyclonal (C-Terminus) Antibody - LS-B6930 - LSBio	
CatalogID:	LS-B6930
Validation:	This antibody replaces catalog number LS-C101133. It has been validated for use in the following assays: IHC-P.
Target:	transient receptor potential cation channel, subfamily M, member 7 (TRPM7)
Synonyms:	TRPM7 Antibody, CHAK Antibody, LTRPC7 Antibody, ALSPDC Antibody, TRP-PLIK Antibody, CHAK1 Antibody, Channel-kinase 1 Antibody, LTrpC-7 Antibody
Family / Subfamily:	Protein Kinase / Alpha-kinases
Host	TRPM7 antibody was produced in Rabbit
Clonality:	Polyclonal
Immunogen Species:	TRPM7 antibody was raised against Human
Antigen Type:	Synthetic peptide
Immunogen:	TRPM7 antibody was raised against kLH conjugated synthetic peptide selected from the C-terminal region of human CHAK1.
Epitope:	C-Terminus
Reactivity:	Human, Mouse
Purification:	Ammonium sulfate precipitation
Presentation:	PBS, 0.09% sodium azide
Recommended Storage:	Long term: -20°C; Short term: +4°C; Avoid freeze-thaw cycles.
Uses:	IHC - Paraffin (10 µg/ml), Western blot (1:1000) (Optimal dilution to be determined by the researcher)
Size:	200 µl

Immunohistochemistry Image:



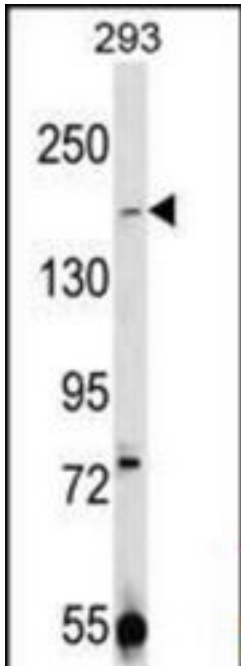
Anti-TRPM7 antibody IHC of human brain, cortex. Immunohistochemistry of formalin-fixed, paraffin-embedded tissue after heat-induced antigen retrieval. Antibody LS-B6930 concentration 10 ug/ml.

Immunohistochemistry Image:



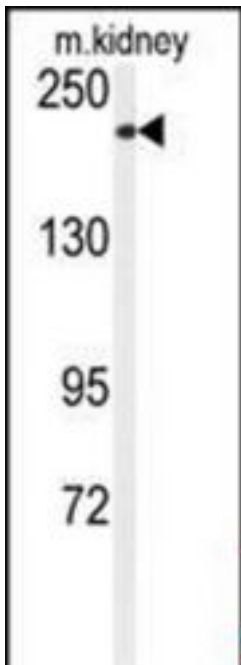
Formalin-fixed and paraffin-embedded human cancer tissue reacted with the primary antibody, which was peroxidase-conjugated to the secondary antibody, followed by DAB staining. This data demonstrates the use of this antibody for immunohistochemistry; clinical relevance has not been evaluated. BC = breast carcinoma; HC = hepatocarcinoma.

Western Blot Image:



CHAK1 Antibody LS-B6930 Western blot of 293 cell line lysates (35 ug/lane). This demonstrates the CHAK1 antibody detected the CHAK1 protein (arrow).

Western Blot Image:



Western blot of anti-CHAK1 Antibody (C-term) LS-B6930 in mouse kidney tissue lysates (35 ug/lane). CHAK1 (arrow) was detected using the purified Pab.

Requested From:

Japan

Laboratory Reagent For In Vitro Research Use Only

Not for resale without prior written consent from LifeSpan BioSciences, Inc.

Created on 9/24/2014

© 2014 LifeSpan BioSciences