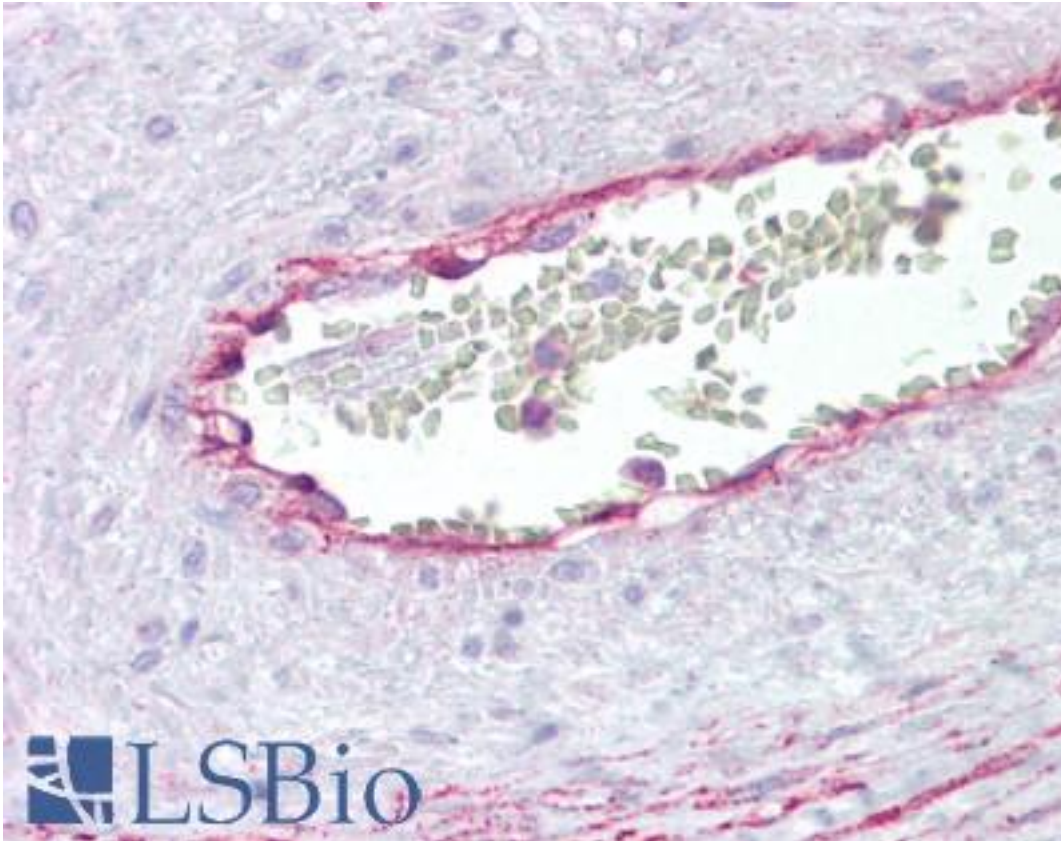


**ANXA2 / Annexin A2 Rabbit anti-Human Polyclonal (N-Terminus) Antibody - LS-B6917 - LSBio**

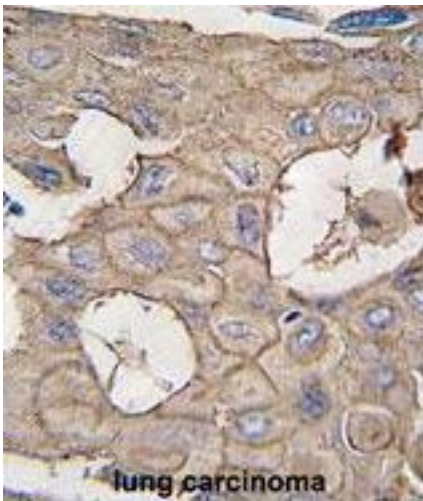
<b>CatalogID:</b>	LS-B6917
<b>Validation:</b>	This antibody replaces catalog number LS-C100618. It has been validated for use in the following assays: IHC-P.
<b>Target:</b>	annexin A2 (ANXA2)
<b>Synonyms:</b>	ANXA2 Antibody, Annexin A2 Antibody, Annexin-2 Antibody, ANX2 Antibody, Calpactin I heavy chain Antibody, Chromobindin-8 Antibody, CAL1H Antibody, Calpactin I heavy polypeptide Antibody, Chromobindin 8 Antibody, LPC2 Antibody, LIP2 Antibody, Lipocortin II Antibody, p36 Antibody, LPC2D Antibody, PAP-IV Antibody, Protein I Antibody, Annexin II Antibody, ANX2L4 Antibody, Calpactin-1 heavy chain Antibody
<b>Family / Subfamily:</b>	Annexin
<b>Host</b>	ANXA2 antibody was produced in Rabbit
<b>Clonality:</b>	Polyclonal
<b>Immunogen Species:</b>	ANXA2 / Annexin A2 antibody was raised against Human
<b>Antigen Type:</b>	Synthetic peptide
<b>Immunogen:</b>	ANXA2 / Annexin A2 antibody was raised against kLH conjugated synthetic peptide selected from the N-terminal region of human ANXA2.
<b>Epitope:</b>	N-Terminus
<b>Reactivity:</b>	Human, Mouse
<b>Purification:</b>	Ammonium sulfate precipitation
<b>Presentation:</b>	PBS, 0.09% sodium azide
<b>Recommended Storage:</b>	Long term: -20°C; Short term: +4°C; Avoid freeze-thaw cycles.
<b>Usage Summary:</b>	Please note that cross-reactivity of this antibody with mouse has been confirmed in WB only. The antibody has not been evaluated for use with mouse in alternate assays, including IHC, at this time. In the absence of testing data we unfortunately cannot guarantee cross-reactivity with mouse in assays other than Western.
<b>Uses:</b>	IHC - Paraffin (10 µg/ml), Western blot (1:1000) (Optimal dilution to be determined by the researcher)
<b>Size:</b>	200 µl

**Immunohistochemistry Image:**



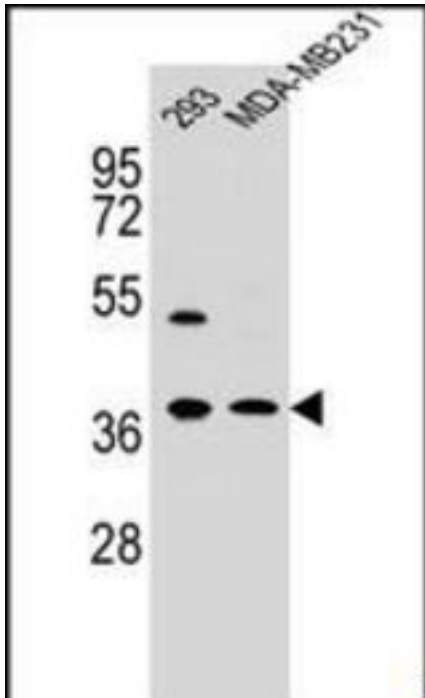
Anti-Annexin A2 antibody IHC of human placental vessel. Immunohistochemistry of formalin-fixed, paraffin-embedded tissue after heat-induced antigen retrieval. Antibody LS-B6917 concentration 10 ug/ml.

**Immunohistochemistry Image:**



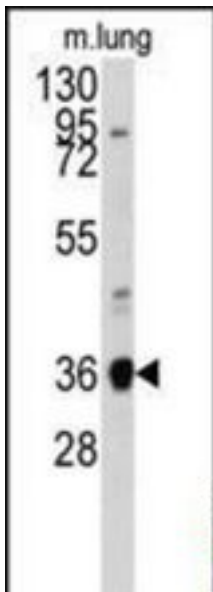
Formalin-fixed and paraffin-embedded human lung carcinoma tissue reacted with ANXA2 antibody (N-term) , which was peroxidase-conjugated to the secondary antibody, followed by DAB staining. This data demonstrates the use of this antibody for immunohistochemistry; clinical relevance has not been evaluated.

**Western Blot Image:**



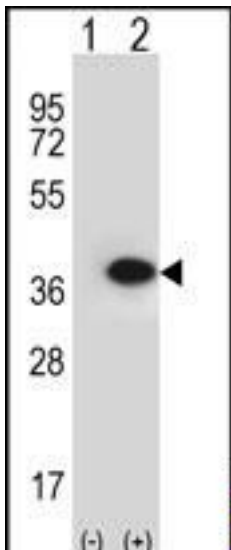
ANXA2 Antibody (N-term) western blot analysis in 293,MDA-MB231 cell line lysates (35 ug/lane).This demonstrates the ANXA2 antibody detected the ANXA2 protein (arrow).

**Western Blot Image:**



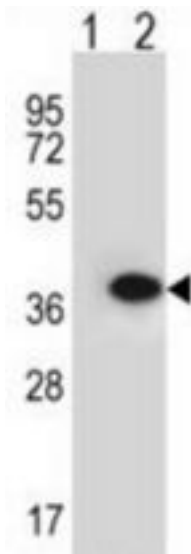
Western blot analysis of anti-ANXA2 Antibody (N-term) in mouse lung tissue lysates (35 ug/lane). ANXA2(arrow) was detected using the purified Pab.

**Western Blot Image:**



Western blot analysis of ANXA2 (arrow) using rabbit polyclonal ANXA2 Antibody (N-term). 293 cell lysates (2 ug/lane) either nontransfected (Lane 1) or transiently transfected (Lane 2) with the ANXA2 gene.

**Western Blot Image:**



Western blot of ANXA2 antibody on 293 cell lysates (2 ug/lane) either nontransfected (Lane 1) or transiently transfected (Lane 2) with ANXA2.

**Requested From:**

Japan

Laboratory Reagent For In Vitro Research Use Only

Not for resale without prior written consent from LifeSpan BioSciences, Inc.

Created on 9/24/2014

© 2014 LifeSpan BioSciences