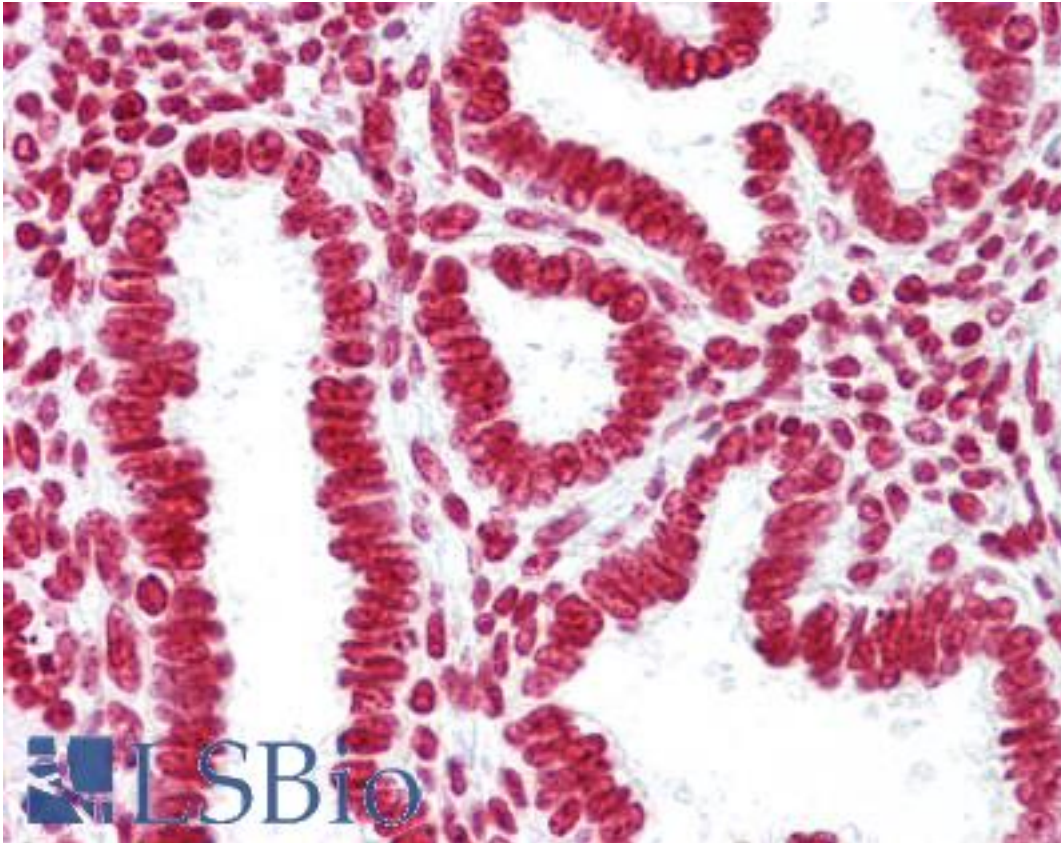


Histone H3 Rabbit anti-Human Polyclonal Antibody - LS-B6895 - LSBio

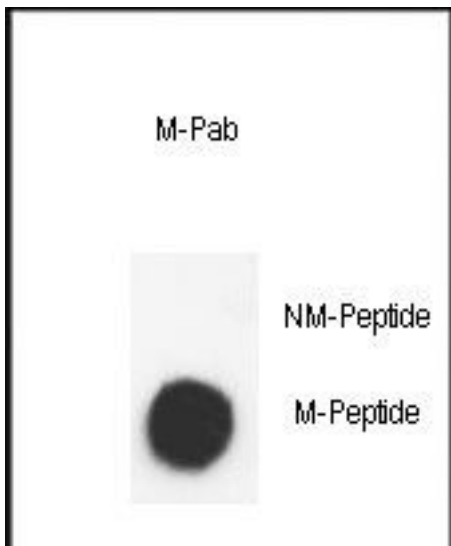
CatalogID:	LS-B6895
Validation:	This antibody replaces catalog number LS-C96591. It has been validated for use in the following assays: IHC-P.
Target:	Histone H3
Host	Histone H3 antibody was produced in Rabbit
Clonality:	Polyclonal
Immunogen Species:	Histone H3 antibody was raised against Human
Antigen Type:	Synthetic peptide
Immunogen:	Histone H3 antibody was raised against kLH conjugated synthetic peptide methylated on K9(2 methyl groups) selected from aa 6~12 of human Histone 3.
Reactivity:	Human
Purification:	Protein G purified
Presentation:	PBS, 0.09% sodium azide
Recommended Storage:	Short term 4°C, long term aliquot and store at -20°C, avoid freeze thaw cycles.
Uses:	IHC - Paraffin (10 µg/ml), Dot Blot (1:500) (Optimal dilution to be determined by the researcher)
Size:	200 µl

Immunohistochemistry Image:



Anti-Histone H3 antibody IHC of human uterus. Immunohistochemistry of formalin-fixed, paraffin-embedded tissue after heat-induced antigen retrieval. Antibody LS-B6895 concentration 10 ug/ml.

Dot Blot Image:



Dot blot analysis of anti-Methyl-K-H3-K9(2Me)-4MAPS Pab LS-B6895 on nitrocellulose membrane. 50 ng of Methyl-peptide or Non Methyl-peptide per dot were adsorbed. Antibody working concentrations are 0.5 ug per ml.

Requested From:

Japan

Laboratory Reagent For In Vitro Research Use Only

Not for resale without prior written consent from LifeSpan BioSciences, Inc.

Created on 9/24/2014

© 2014 LifeSpan BioSciences