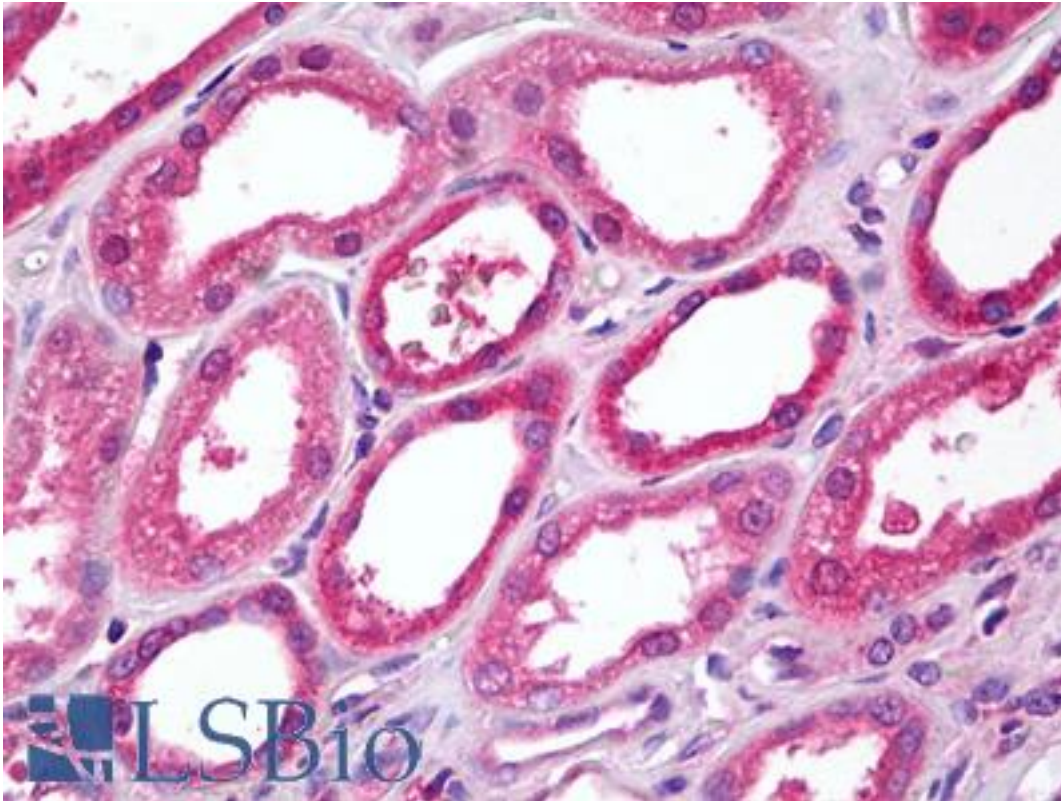


OPRK1 / Kappa Opioid Receptor Rabbit anti-Human Polyclonal (aa366-380) Antibody - LS-B6883 - LSBio

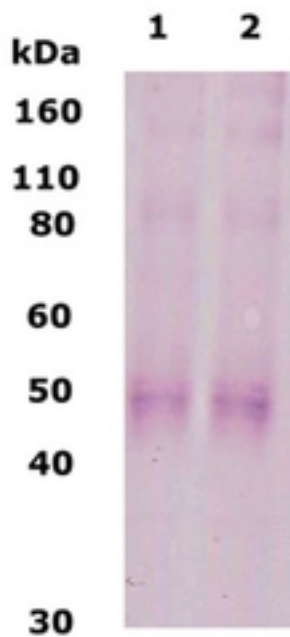
CatalogID:	LS-B6883
Validation:	This antibody replaces catalog number LS-C141817. It has been validated for use in the following assays: IHC-P.
Target:	opioid receptor, kappa 1 (OPRK1)
Synonyms:	OPRK1 Antibody, Kappa-type opioid receptor Antibody, Opiate receptor, kappa-1 Antibody, K-OR-1 Antibody, KOR Antibody, Opioid receptor, kappa 1 Antibody, OPRK Antibody, Ork1 Antibody, Kappa opioid receptor Antibody, KOR-1 Antibody, Opioid receptor kappa Antibody
Family / Subfamily:	GPCR / Opioid
Host	OPRK1 antibody was produced in Rabbit
Clonality:	Polyclonal
Immunogen Species:	OPRK1 / Kappa Opioid Receptor antibody was raised against Human
Antigen Type:	Synthetic peptide
Immunogen:	OPRK1 / Kappa Opioid Receptor antibody was raised against synthetic peptide
Specificity:	Kappa Opioid Receptor.
Epitope:	aa366-380
Reactivity:	Human, Rat
Purification:	Immunoaffinity purified
Presentation:	PBS, 0.02% sodium azide
Recommended Storage:	Short term 4°C, long term aliquot and store at -20°C, avoid freeze thaw cycles.
Uses:	IHC - Paraffin (5 µg/ml), Western blot (Optimal dilution to be determined by the researcher)
Size:	100 µg
Concentration:	1 mg/ml

Immunohistochemistry Image:



Anti-Kappa Opioid Receptor antibody IHC of human kidney, tubules. Immunohistochemistry of formalin-fixed, paraffin-embedded tissue after heat-induced antigen retrieval. Antibody LS-B6883 concentration 5 ug/ml.

Western Blot Image:



Kappa Opioid Receptor Antibody - Western blot of KOR-1 with KOR-1 antibody at 1:500 dilution. 10 ug of brain lysate (Lane 1) and rat brain lysate (Lane 2).

Requested From:	Japan
Laboratory Reagent For In Vitro Research Use Only	
Not for resale without prior written consent from LifeSpan BioSciences, Inc.	
Created on 9/24/2014	
© 2014 LifeSpan BioSciences	