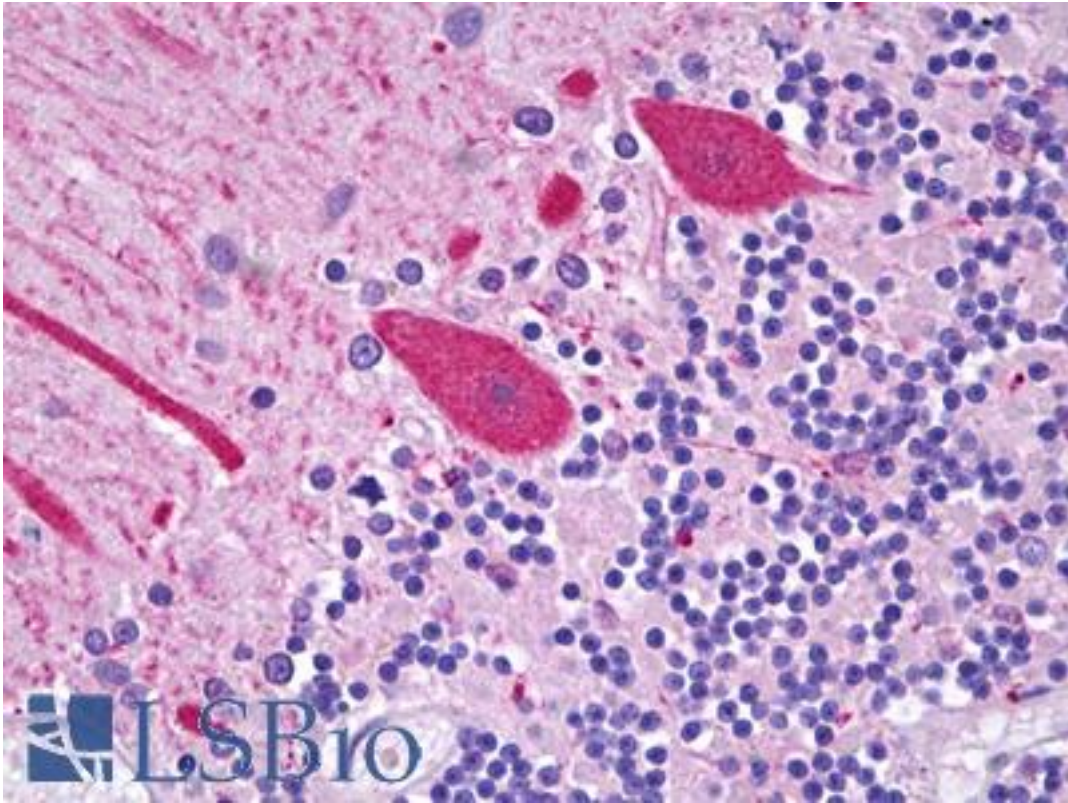


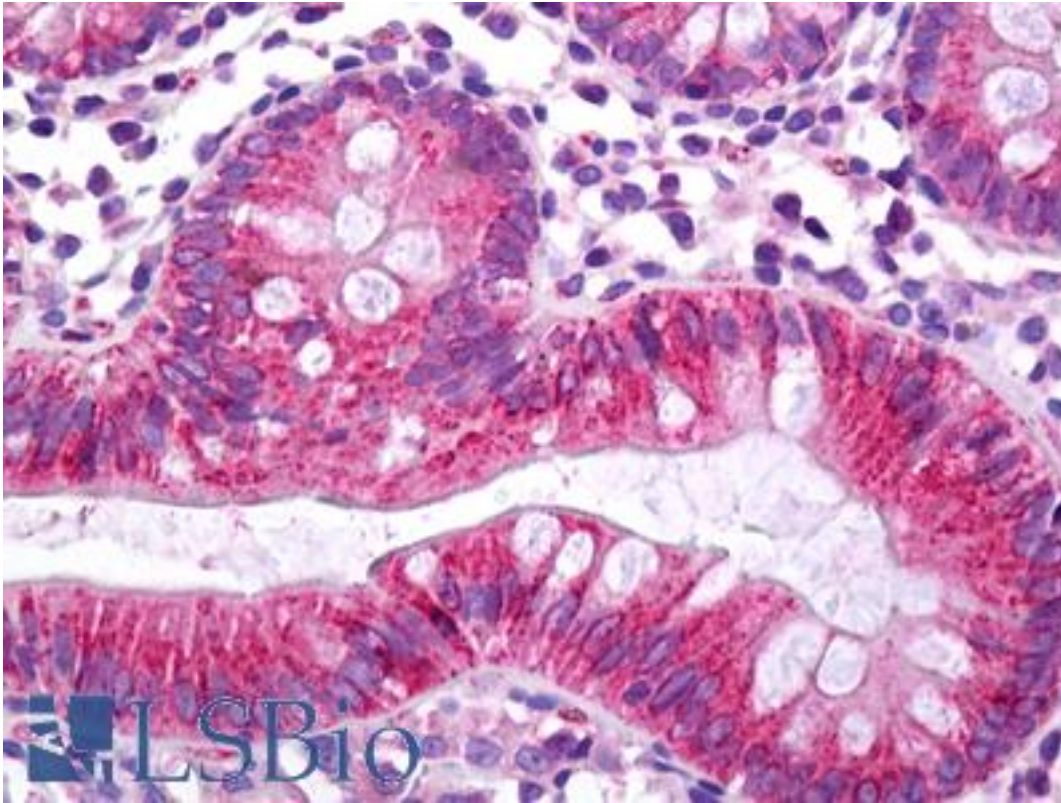
CES2 / Esterase Rabbit anti-Human Polyclonal (C-Terminus) Antibody - LS-B6873 - LSBio	
CatalogID:	LS-B6873
Validation:	This antibody replaces catalog number LS-C47002. It has been validated for use in the following assays: IHC-P.
Target:	carboxylesterase 2 (CES2)
Synonyms:	CES2 Antibody, Carboxylesterase 2 Antibody, CE-2 Antibody, CES2A1 Antibody, Cocaine esterase Antibody, Esterase Antibody, ICE Antibody, HCE-2 Antibody, PCE-2 Antibody
Host	CES2 antibody was produced in Rabbit
Clonality:	Polyclonal
Immunogen Species:	CES2 / Esterase antibody was raised against Human
Antigen Type:	Synthetic peptide
Immunogen:	CES2 / Esterase antibody was raised against synthetic peptide from human CES2.
Specificity:	synthetic peptide corresponding to C-terminal residues of human CES2(Carboxylesterase 2 precursor)
Epitope:	C-Terminus
Reactivity:	Human
Purification:	Immunoaffinity purified
Presentation:	PBS, 0.01% sodium azide, 50% glycerol.
Recommended Storage:	Short term 4°C, long term aliquot and store at -20°C, avoid freeze thaw cycles.
Uses:	IHC - Paraffin (5 µg/ml), Western blot (1 µg/ml), ELISA (Optimal dilution to be determined by the researcher)
Size:	50 µg
Concentration:	0.5 mg/ml

Immunohistochemistry Image:



Anti-CES2 / Esterase antibody IHC of human brain, cerebellum, Purkinje cells.
Immunohistochemistry of formalin-fixed, paraffin-embedded tissue after heat-induced antigen retrieval. Antibody LS-B6873 concentration 5 ug/ml.

Immunohistochemistry Image:



Anti-CES2 / Esterase antibody IHC of human colon. Immunohistochemistry of formalin-fixed, paraffin-embedded tissue after heat-induced antigen retrieval. Antibody LS-B6873 concentration 5 ug/ml.

Requested From:

Japan

Laboratory Reagent For In Vitro Research Use Only

Not for resale without prior written consent from LifeSpan BioSciences, Inc.

Created on 9/24/2014

© 2014 LifeSpan BioSciences