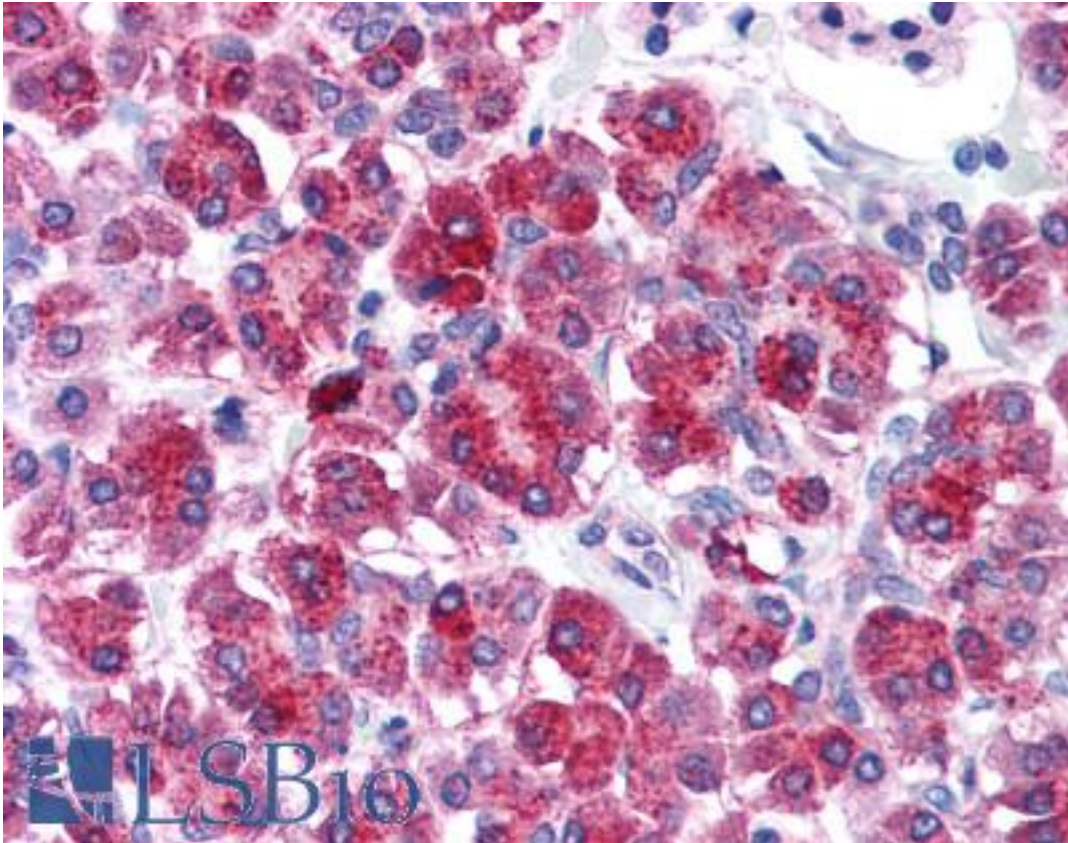


TLR3 Rabbit anti-Human Polyclonal (N-Terminus) Antibody - LS-B687 - LSBio

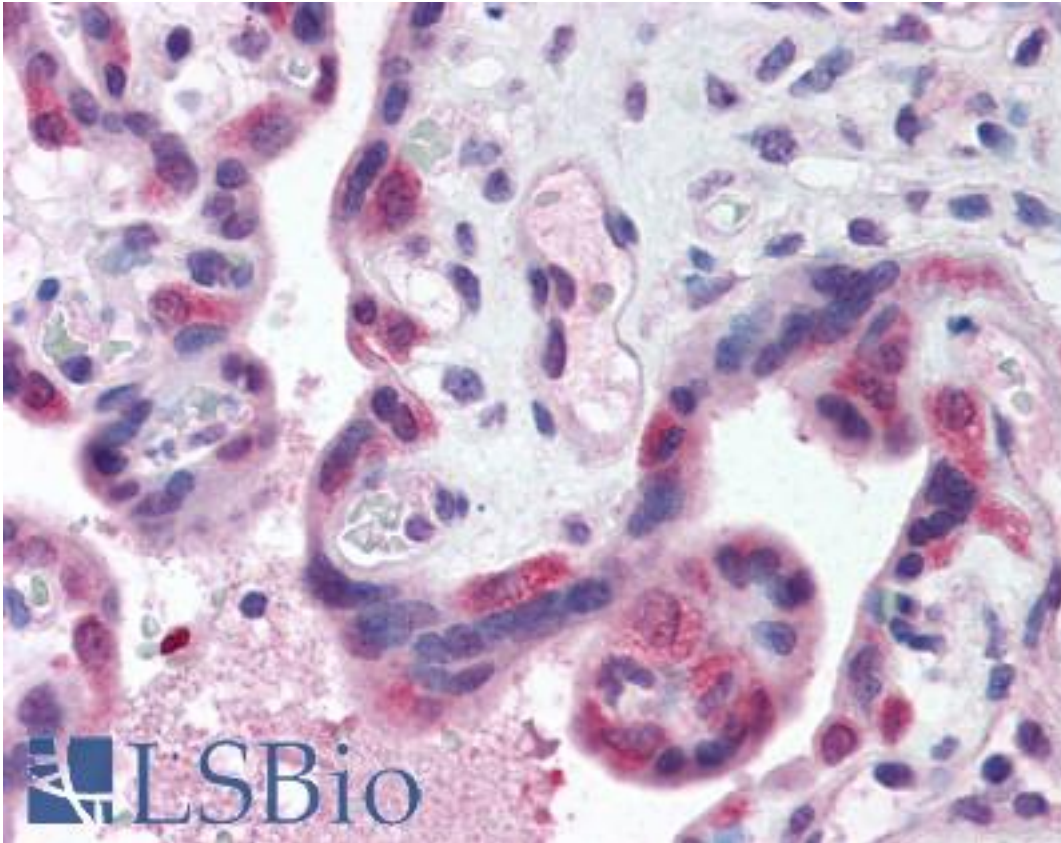
CatalogID:	LS-B687
Validation:	This antibody replaces catalog number LS-C19549. It has been validated for use in the following assays: IHC.
Target:	toll-like receptor 3 (TLR3)
Synonyms:	TLR3 Antibody, CD283 Antibody, Toll-like receptor 3 Antibody, CD283 antigen Antibody, IIAE2 Antibody
Family / Subfamily:	Toll-like Receptor / not assigned-Toll-like Receptor
Host	TLR3 antibody was produced in Rabbit
Clonality:	Polyclonal
Immunogen Species:	TLR3 antibody was raised against Human
Specificity:	15 amino acids near the N-terminus of human TLR3
Epitope:	N-Terminus
Reactivity:	Human, Mouse
Purification:	Ion exchange chromatography
Presentation:	PBS, 0.02% sodium azide.
Recommended Storage:	Short term 4°C, long term aliquot and store at -20°C, avoid freeze thaw cycles. Store undiluted.
Usage Summary:	Immunohistochemistry: LS-B687 was validated for use in immunohistochemistry on a panel of 21 formalin-fixed, paraffin-embedded (FFPE) human tissues after heat induced antigen retrieval in pH 6.0 citrate buffer. After incubation with the primary antibody, slides were incubated with biotinylated secondary antibody, followed by alkaline phosphatase-streptavidin and chromogen. The stained slides were evaluated by a pathologist to confirm staining specificity. The optimal working concentration for LS-B687 was determined to be 5 ug/ml.
Uses:	IHC - Paraffin (5 µg/ml), Western blot (1 - 2 µg/ml) (Optimal dilution to be determined by the researcher)
Size:	50 µg
Concentration:	1 mg/ml

Immunohistochemistry Image:



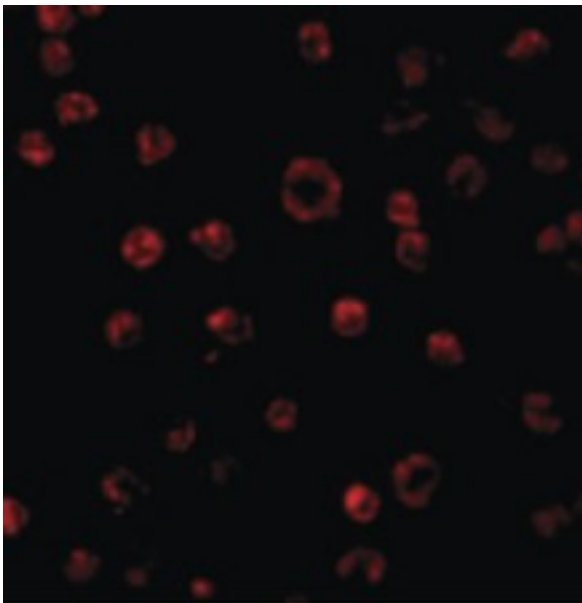
Anti-TLR3 antibody IHC of human pancreas. Immunohistochemistry of formalin-fixed, paraffin-embedded tissue after heat-induced antigen retrieval. Antibody LS-B687 concentration 5 ug/ml.

Immunohistochemistry Image:



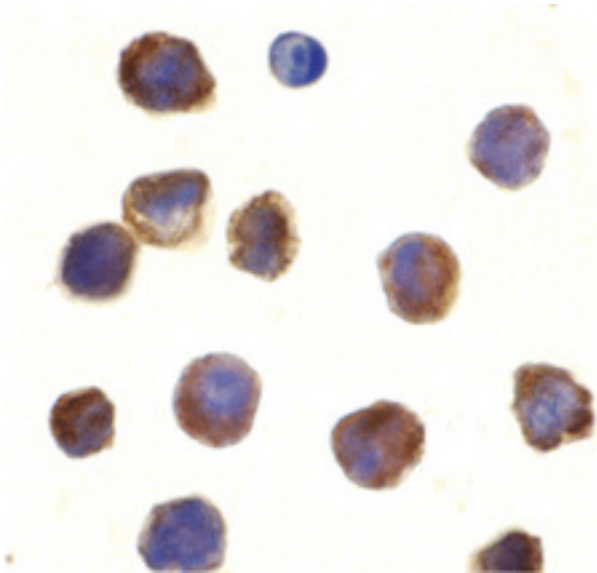
Anti-TLR3 antibody IHC of human placenta. Immunohistochemistry of formalin-fixed, paraffin-embedded tissue after heat-induced antigen retrieval. Antibody LS-B687 concentration 5 ug/ml.

Immunofluorescence Image:



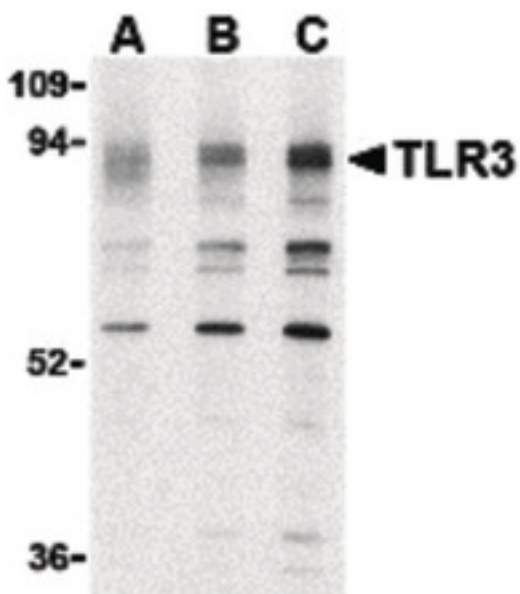
Immunofluorescence of TLR3 in K562 cells with TLR3 antibody at 2 ug/ml.

Immunocytochemistry Image:



Immunocytochemistry of TLR3 in K562 cells with TLR3 antibody at 10 ug/ml.

Western Blot Image:



Western blot of TLR3 in K562 cell lysate with TLR3 antibody at (A) 0.5, (B) 1 and (C) 2 ug/ml.

Requested From:

Japan

Laboratory Reagent For In Vitro Research Use Only

Not for resale without prior written consent from LifeSpan BioSciences, Inc.

Created on 9/24/2014

© 2014 LifeSpan BioSciences