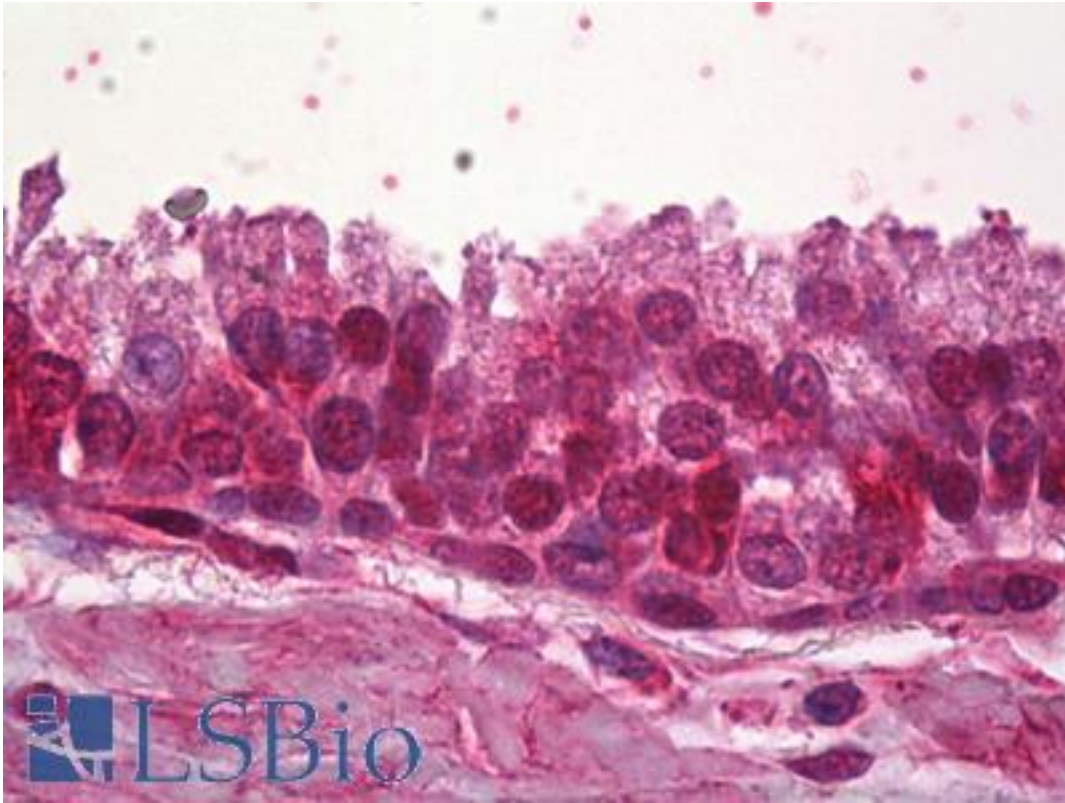


ZNF217 Goat anti-Human Polyclonal (Internal) Antibody - LS-B6869 - LSBio	
<b>CatalogID:</b>	LS-B6869
<b>Validation:</b>	This antibody replaces catalog number LS-C55706. It has been validated for use in the following assays: IHC-P.
<b>Target:</b>	zinc finger protein 217 (ZNF217)
<b>Synonyms:</b>	ZNF217 Antibody, Zinc finger protein 217 Antibody, ZABC1 Antibody
<b>Family / Subfamily:</b>	Zinc Finger
<b>Host</b>	ZNF217 antibody was produced in Goat
<b>Clonality:</b>	Polyclonal
<b>Immunogen Species:</b>	ZNF217 antibody was raised against Human
<b>Antigen Type:</b>	Synthetic peptide
<b>Immunogen:</b>	ZNF217 antibody was raised against synthetic peptide C-KNAADDSADKVNKN from an internal region of human ZNF217 (NP_006517.1). Percent identity by BLAST analysis: Human, Gorilla (100%); Monkey, Marmoset (93%); Elephant (86%).
<b>Specificity:</b>	Human ZNF217.
<b>Epitope:</b>	Internal
<b>Reactivity:</b>	Human, Gorilla
<b>Predicted Reactivity:</b>	Monkey
<b>Purification:</b>	Immunoaffinity purified
<b>Presentation:</b>	Tris-buffered saline, pH 7.3, 0.5% BSA, 0.02% sodium azide
<b>Recommended Storage:</b>	Short term 4°C, long term aliquot and store at -20°C, avoid freeze thaw cycles.
<b>Uses:</b>	IHC - Paraffin (5 µg/ml), ELISA (1:16000) (Optimal dilution to be determined by the researcher)
<b>Size:</b>	50 µg
<b>Concentration:</b>	0.5 mg/ml

**Immunohistochemistry Image:**



Anti-ZNF217 antibody IHC of human prostate. Immunohistochemistry of formalin-fixed, paraffin-embedded tissue after heat-induced antigen retrieval. Antibody LS-B6869 concentration 5 ug/ml.

**Requested From:**

Japan

Laboratory Reagent For In Vitro Research Use Only

Not for resale without prior written consent from LifeSpan BioSciences, Inc.

Created on 9/24/2014

© 2014 LifeSpan BioSciences