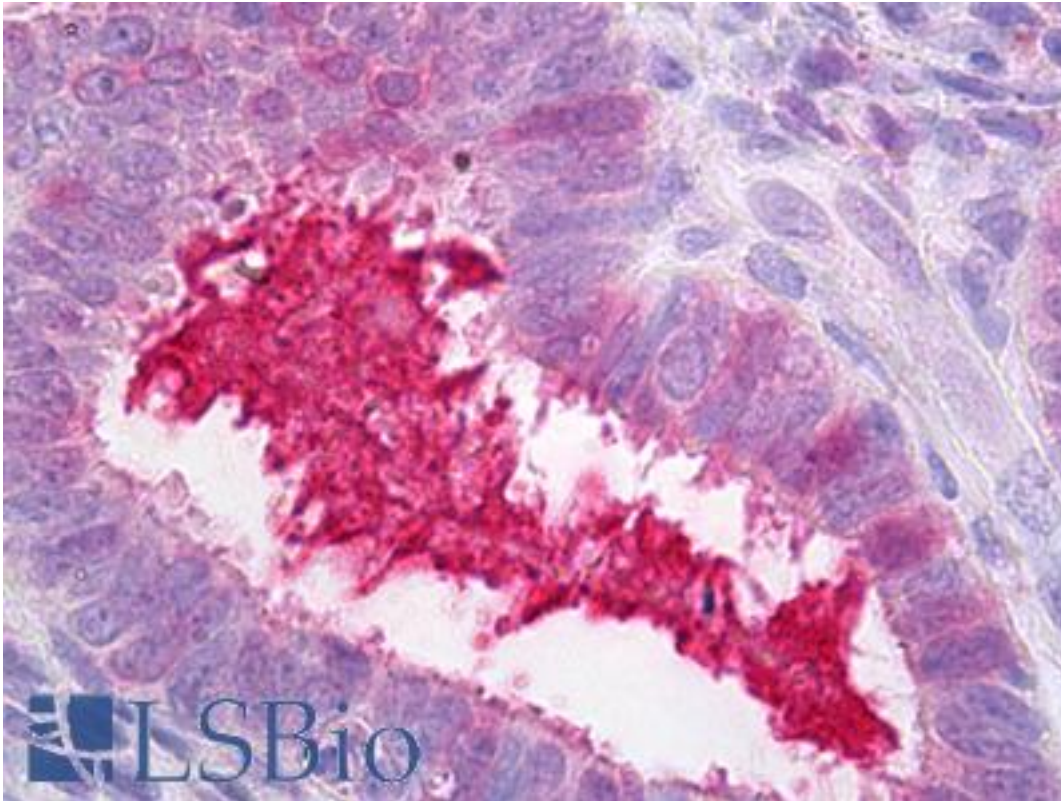


**SERPING1 / C1 Inhibitor Sheep anti-Human Polyclonal Antibody - LS-B6864 - LSBio**

<b>CatalogID:</b>	LS-B6864
<b>Validation:</b>	This antibody replaces catalog number LS-C41844. It has been validated for use in the following assays: IHC-P.
<b>Target:</b>	serpin peptidase inhibitor, clade G (C1 inhibitor), member 1 (SERPING1)
<b>Synonyms:</b>	SERPING1 Antibody, C1-inhibiting factor Antibody, C1IN Antibody, C1 Inh Antibody, C1-INH Antibody, C1INH Antibody, C1NH Antibody, C1 Inhibitor Antibody, HAE1 Antibody, HAE2 Antibody, Plasma protease C1 inhibitor Antibody, C1 esterase inhibitor Antibody, Serpin G1 Antibody
<b>Host</b>	SERPING1 antibody was produced in Sheep
<b>Clonality:</b>	Polyclonal
<b>Isotype:</b>	IgG
<b>Immunogen Species:</b>	SERPING1 / C1 Inhibitor antibody was raised against Human
<b>Immunogen:</b>	SERPING1 / C1 Inhibitor antibody was raised against native, from plasma.
<b>Specificity:</b>	Minimal reactivity with related serum proteins. Reacts with human, cat, dog and rabbit
<b>Reactivity:</b>	Human, Cat, Dog, Rabbit
<b>Purification:</b>	Ig fraction
<b>Presentation:</b>	PBS, 0.09% sodium azide.
<b>Recommended Storage:</b>	Short term 4°C, long term aliquot and store at -20°C, avoid freeze thaw cycles.
<b>Uses:</b>	IHC - Paraffin (10 µg/ml), Immunodiffusion (Optimal dilution to be determined by the researcher)
<b>Size:</b>	250 µl
<b>Concentration:</b>	5 mg/ml

**Immunohistochemistry Image:**



Anti-SERPING1 / C1INH antibody IHC of human uterus, endometrium. Immunohistochemistry of formalin-fixed, paraffin-embedded tissue after heat-induced antigen retrieval. Antibody LS-B6864 concentration 10 ug/ml.

**Requested From:**

Japan

Laboratory Reagent For In Vitro Research Use Only

Not for resale without prior written consent from LifeSpan BioSciences, Inc.

Created on 9/24/2014

© 2014 LifeSpan BioSciences