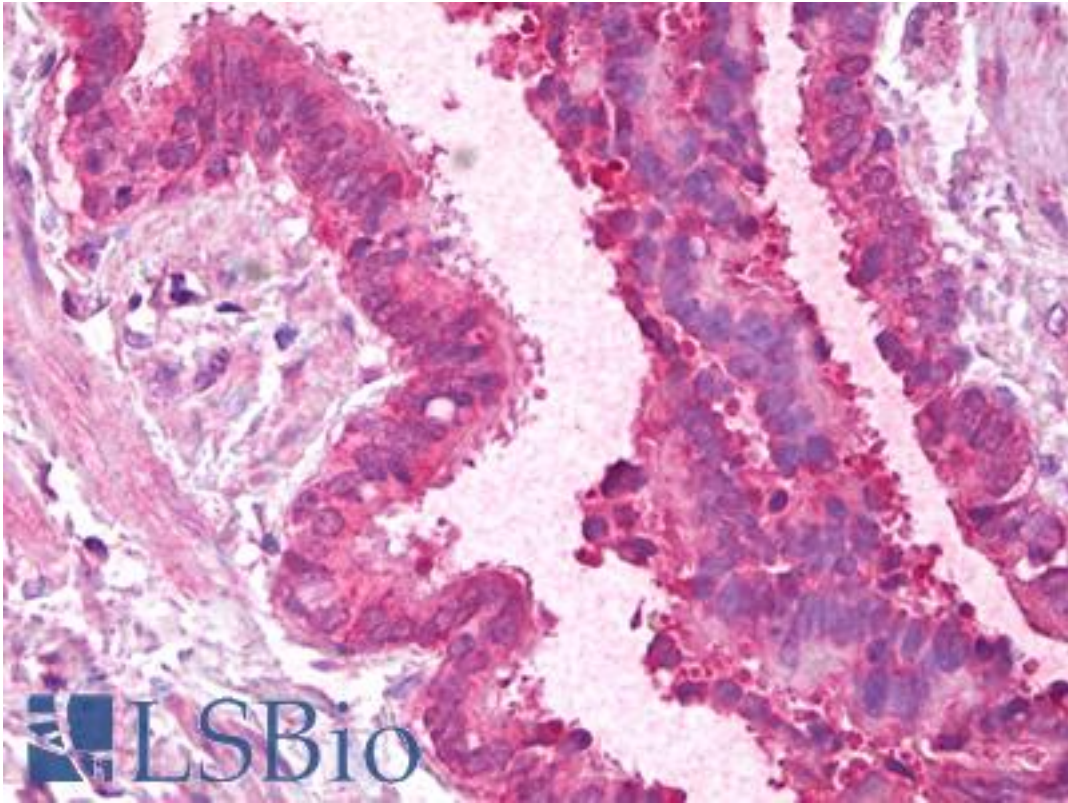


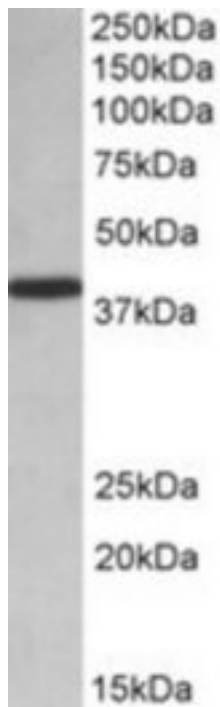
HnRNP-E1 / PCBP1 Goat anti-Human Polyclonal (Internal) Antibody - LS-B6862 - LSBio	
CatalogID:	LS-B6862
Validation:	This antibody replaces catalog number LS-C139683. It has been validated for use in the following assays: IHC-P.
Target:	poly(rC) binding protein 1 (PCBP1)
Synonyms:	PCBP1 Antibody, Alpha-CP1 Antibody, HnRNP E1 Antibody, HnRNP-E1 Antibody, HnRNP-X Antibody, HNRPE1 Antibody, Poly(rC) binding protein 1 Antibody, HNRPX Antibody, Poly(rC)-binding protein 1 Antibody
Host	PCBP1 antibody was produced in Goat
Clonality:	Polyclonal
Immunogen Species:	HnRNP-E1 / PCBP1 antibody was raised against Human
Antigen Type:	Synthetic peptide
Immunogen:	HnRNP-E1 / PCBP1 antibody was raised against synthetic peptide C-ADLAKLNQVARQQSH from an internal region of human PCBP1 (NP_006187.2). Percent identity by BLAST analysis: Human, Gorilla, Gibbon, Mouse, Hamster, Panda, Dog, Bat, Bovine, Horse, Rabbit (93%); Monkey, Marmoset (87%).
Specificity:	Human PCBP1.
Epitope:	Internal
Reactivity:	Human
Predicted Reactivity:	Gorilla, Gibbon, Mouse, Bat, Bovine, Dog, Hamster, Horse, Rabbit
Purification:	Immunoaffinity purified
Presentation:	Tris-buffered saline, pH 7.3, 0.5% BSA, 0.02% sodium azide
Recommended Storage:	Short term 4°C, long term aliquot and store at -20°C, avoid freeze thaw cycles.
Usage Summary:	Peptide ELISA: antibody detection limit dilution 1:32000. Western blot: Approx 38kD band observed in lysates of cell line HeLa and in Human Placenta lysates (calculated MW of 37.5kD according to NP_006187.2). Recommended concentration: 0.01-0.03 ug/ml. Reactive species based on sequence similarity.
Uses:	IHC - Paraffin (5 µg/ml), Western blot (0.01 - 0.03 µg/ml), ELISA (1:32000) (Optimal dilution to be determined by the researcher)
Size:	50 µg
Concentration:	0.5 mg/ml

Immunohistochemistry Image:



Anti-PCBP1 antibody IHC of human lung, respiratory epithelium. Immunohistochemistry of formalin-fixed, paraffin-embedded tissue after heat-induced antigen retrieval. Antibody LS-B6862 concentration 5 ug/ml.

Western Blot Image:



PCBP1 antibody (0.01 ug/ml) staining of HeLa lysate (35 ug protein/ml in RIPA buffer). Primary incubation was 1 hour. Detected by chemiluminescence.

Requested From:

Japan

Laboratory Reagent For In Vitro Research Use Only

Not for resale without prior written consent from LifeSpan BioSciences, Inc.

Created on 9/24/2014

© 2014 LifeSpan BioSciences