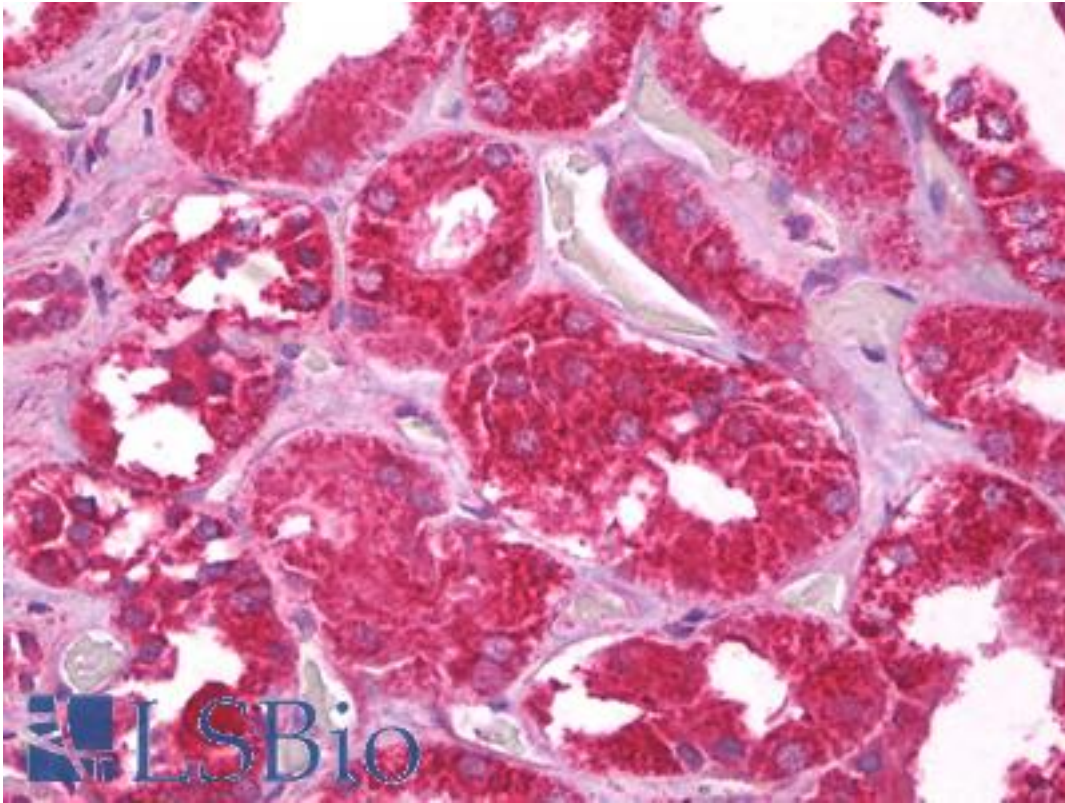


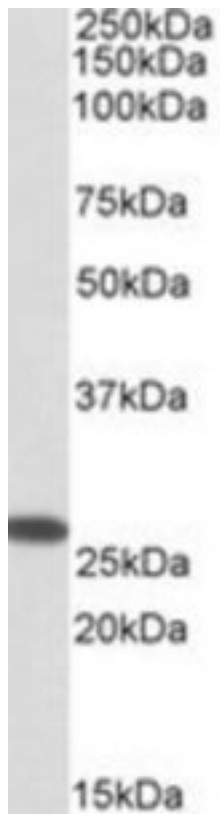
CHCHD3 Goat anti-Human Polyclonal (Internal) Antibody - LS-B6861 - LSBio	
CatalogID:	LS-B6861
Validation:	This antibody replaces catalog number LS-C112927. It has been validated for use in the following assays: IHC-P.
Target:	coiled-coil-helix-coiled-coil-helix domain containing 3 (CHCHD3)
Synonyms:	CHCHD3 Antibody, PPP1R22 Antibody, MINOS3 Antibody
Host	CHCHD3 antibody was produced in Goat
Clonality:	Polyclonal
Immunogen Species:	CHCHD3 antibody was raised against Human
Antigen Type:	Synthetic peptide
Immunogen:	CHCHD3 antibody was raised against synthetic peptide C-RSSEFYRVTTTEQYQ from an internal region of human CHCHD3 (NP_060282.1). Percent identity by BLAST analysis: Human, Gibbon (100%); Monkey, Sheep, Elephant, Panda, Dog, Bat, Bovine, Horse, Rabbit, Pig (93%); Marmoset, Mouse, Rat, Hamster, Opossum (86%).
Specificity:	Human CHCHD3.
Epitope:	Internal
Reactivity:	Human, Gibbon
Predicted Reactivity:	Monkey, Bat, Bovine, Dog, Horse, Pig, Rabbit, Sheep
Purification:	Immunoaffinity purified
Presentation:	Tris-buffered saline, pH 7.3, 0.5% BSA, 0.02% sodium azide
Recommended Storage:	Short term 4°C, long term aliquot and store at -20°C, avoid freeze thaw cycles.
Usage Summary:	Peptide ELISA: antibody detection limit dilution 1:32000. Western blot: Approx 26.2kDa band observed in Human Placenta lysates (calculated MW of 26kDa according to NP_060282.1). Recommended concentration: 0.3-1 ug/ml.
Uses:	IHC - Paraffin (5 µg/ml), Western blot (0.3 - 1 µg/ml), ELISA (1:32000) (Optimal dilution to be determined by the researcher)
Size:	50 µg
Concentration:	0.5 mg/ml

Immunohistochemistry Image:



Anti-CHCHD3 antibody IHC of human kidney. Immunohistochemistry of formalin-fixed, paraffin-embedded tissue after heat-induced antigen retrieval. Antibody LS-B6861 concentration 5 ug/ml.

Western Blot Image:



CHCHD3 antibody (0.3 ug/ml) staining of Human Placenta lysate (35 ug protein/ml in RIPA buffer). Primary incubation was 1 hour. Detected by chemiluminescence.

Requested From:

Japan

Laboratory Reagent For In Vitro Research Use Only

Not for resale without prior written consent from LifeSpan BioSciences, Inc.

Created on 9/24/2014

© 2014 LifeSpan BioSciences