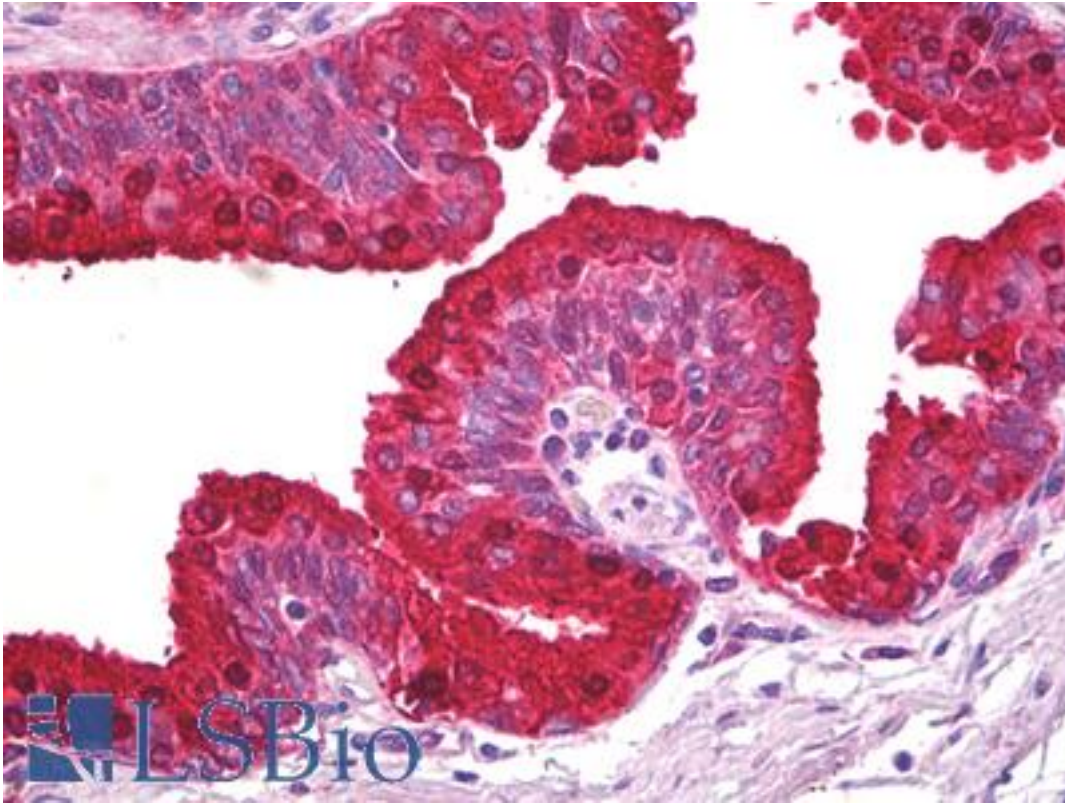


ABCA5 Rabbit anti-Human Polyclonal Antibody - LS-B6852 - LSBio

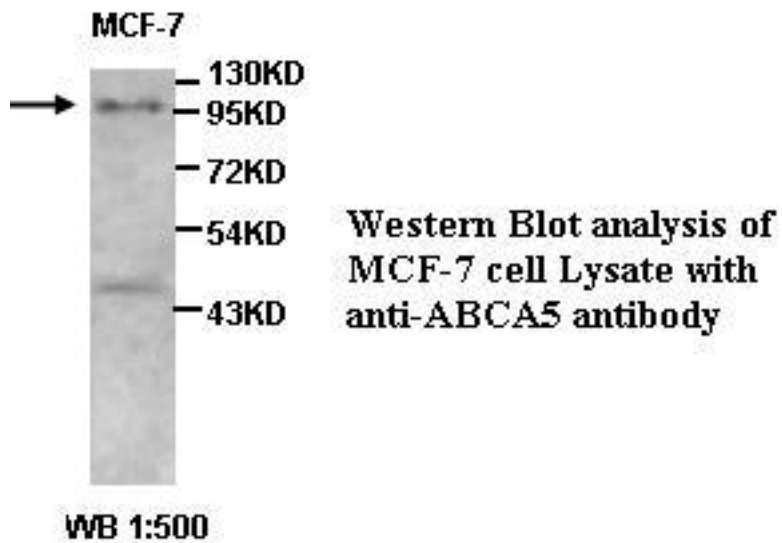
CatalogID:	LS-B6852
Validation:	This antibody replaces catalog number LS-C137284. It has been validated for use in the following assays: IHC-P.
Target:	ATP-binding cassette, sub-family A (ABC1), member 5 (ABCA5)
Synonyms:	ABCA5 Antibody, ATP-binding cassette A5 Antibody, ABC13 Antibody, EST90625 Antibody, KIAA1888 Antibody
Family / Subfamily:	Transporter / ATP-binding cassette - ABCA/ABC1
Host	ABCA5 antibody was produced in Rabbit
Clonality:	Polyclonal
Isotype:	IgG
Immunogen Species:	ABCA5 antibody was raised against Human
Immunogen:	ABCA5 antibody was raised against a 16 amino acid peptide corresponding to the C terminus residues of human ABCA5 protein
Reactivity:	Human, Mouse, Rat
Purification:	Affinity purified
Presentation:	PBS, pH 7.4, 0.02% sodium azide
Recommended Storage:	Short term 4°C, long term aliquot and store at -20°C, avoid freeze thaw cycles.
Uses:	IHC - Paraffin (1:100), Western blot (Optimal dilution to be determined by the researcher)
Size:	50 µl
Concentration:	1 mg/ml

Immunohistochemistry Image:



Anti-ABCA5 antibody IHC of human prostate. Immunohistochemistry of formalin-fixed, paraffin-embedded tissue after heat-induced antigen retrieval. Antibody LS-B6852 dilution 1:100.

Western Blot Image:



Laboratory Reagent For In Vitro Research Use Only

Not for resale without prior written consent from LifeSpan BioSciences, Inc.

Created on 9/24/2014

© 2014 LifeSpan BioSciences