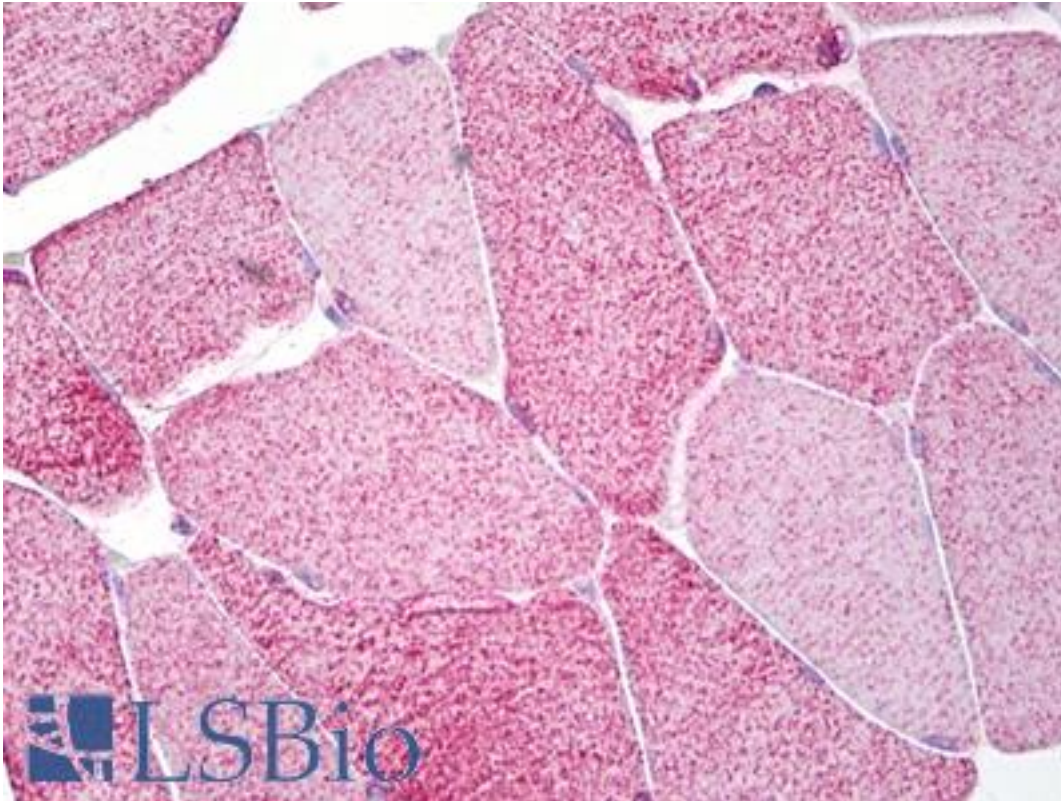


Eomesodermin / EOMES Chicken anti-Human Polyclonal Antibody - LS-B6801 - LSBio	
CatalogID:	LS-B6801
Validation:	This antibody replaces catalog number LS-C123463. It has been validated for use in the following assays: IHC-P.
Target:	eomesodermin
Synonyms:	EOMES Antibody, Eomesodermin Antibody, Eomesodermin homolog Antibody, T box, brain, 2 Antibody, T-box brain protein 2 Antibody, T-box brain2 Antibody, T-brain-2 Antibody, TBR-2 Antibody, TBR2 Antibody
Host	EOMES antibody was produced in Chicken
Clonality:	Polyclonal
Immunogen Species:	Eomesodermin / EOMES antibody was raised against Human
Immunogen:	Eomesodermin / EOMES antibody was raised against linear peptide corresponding to mouse Tbr2 (KLH).
Specificity:	Recognizes mouse Tbr2. Species cross-reactivity: mouse, rat.
Reactivity:	Human, Mouse
Purification:	Immunoaffinity purified
Presentation:	PBS, 0.1 M Tris-glycine, pH 7.4, 150 mM sodium chloride, 0.05% sodium azide
Recommended Storage:	May be stored at 4°C for short-term only. Aliquot to avoid repeated freezing and thawing. Store at -20°C. Aliquots are stable for at least 12 months.
Usage Summary:	Suitable for use in Western Blot and Immunohistochemistry. L. Western Blot: 0.5 ug/ml. Immunohistochemistry: 1:100.
Uses:	IHC - Paraffin (10 µg/ml), Western blot (0.5 µg/ml) (Optimal dilution to be determined by the researcher)
Size:	50 µg
Concentration:	0.5 mg/ml

Immunohistochemistry Image:



Anti-EOMES antibody IHC of human skeletal muscle. Immunohistochemistry of formalin-fixed, paraffin-embedded tissue after heat-induced antigen retrieval. Antibody LS-B6801 concentration 10 ug/ml.

Requested From:

Japan

Laboratory Reagent For In Vitro Research Use Only

Not for resale without prior written consent from LifeSpan BioSciences, Inc.

Created on 9/24/2014

© 2014 LifeSpan BioSciences