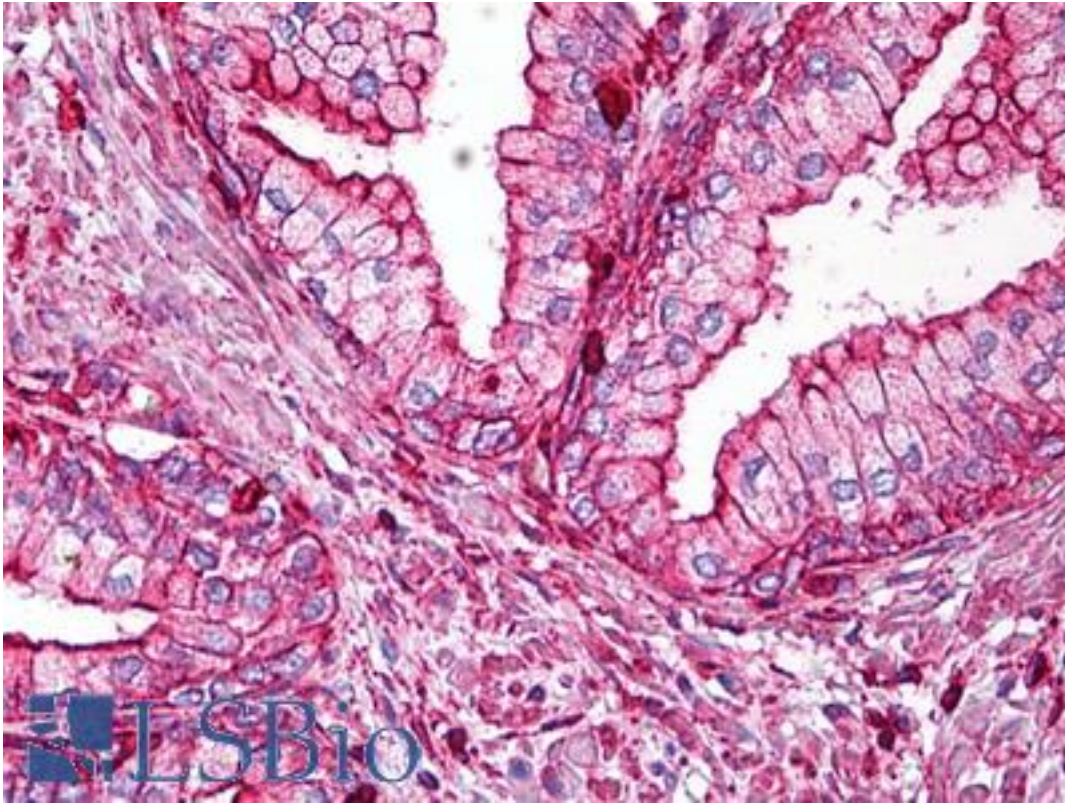


ACTB / Beta Actin Mouse anti-Human Monoclonal (N-Terminus) (2A5) Antibody - LS-B6797 - LSBio	
CatalogID:	LS-B6797
Validation:	This antibody replaces catalog number LS-C136777. It has been validated for use in the following assays: IHC-P.
Target:	actin, beta (ACTB)
Synonyms:	ACTB Antibody, Actin, cytoplasmic 1 Antibody, Beta-actin Antibody, Beta actin Antibody, BRWS1 Antibody, Actin, beta Antibody, Beta cytoskeletal actin Antibody, PS1TP5-binding protein 1 Antibody, PS1TP5BP1 Antibody
Host	ACTB antibody was produced in Mouse
Clonality:	Monoclonal
Isotype:	IgG2b
Clone Name:	2A5
Immunogen Species:	ACTB / Beta Actin antibody was raised against Human
Antigen Type:	Synthetic peptide
Immunogen:	ACTB / Beta Actin antibody was raised against synthetic peptide
Specificity:	Beta-actin from human, mouse, rat, rabbit or chicken. Beta-actin from other species may also be detectable.
Epitope:	N-Terminus
Reactivity:	Human, Mouse, Rat, Rabbit, Chicken
Purification:	Affinity purified
Presentation:	PBS, pH 7.4, 0.05% sodium azide
Recommended Storage:	Short term 4°C, long term aliquot and store at -20°C, avoid freeze thaw cycles.
Uses:	IHC - Paraffin (5 µg/ml), Western blot (1:1000 - 1:10000), ELISA (Optimal dilution to be determined by the researcher)
Size:	50 µg
Concentration:	1 mg/ml

Immunohistochemistry Image:



Anti-Beta Actin antibody IHC of human prostate. Immunohistochemistry of formalin-fixed, paraffin-embedded tissue after heat-induced antigen retrieval. Antibody LS-B6797 concentration 5 ug/ml.

Requested From:

Japan

Laboratory Reagent For In Vitro Research Use Only

Not for resale without prior written consent from LifeSpan BioSciences, Inc.

Created on 9/24/2014

© 2014 LifeSpan BioSciences