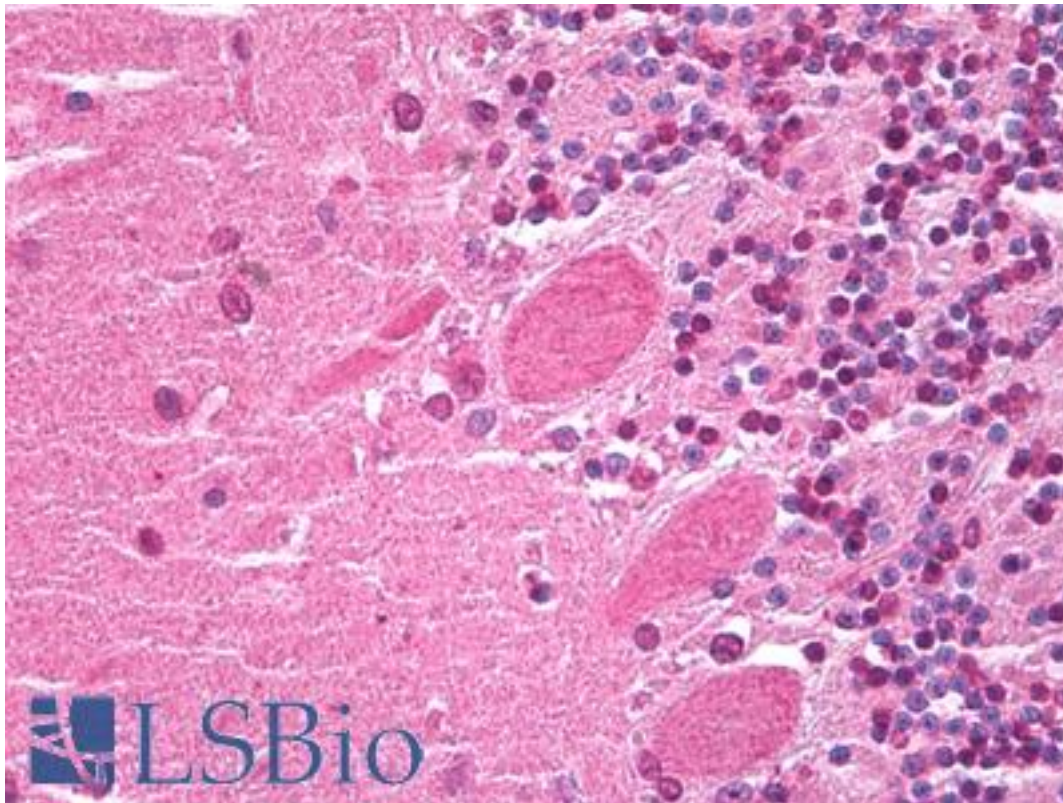


HES5 Rabbit anti-Human Polyclonal (Internal) Antibody - LS-B6782 - LSBio

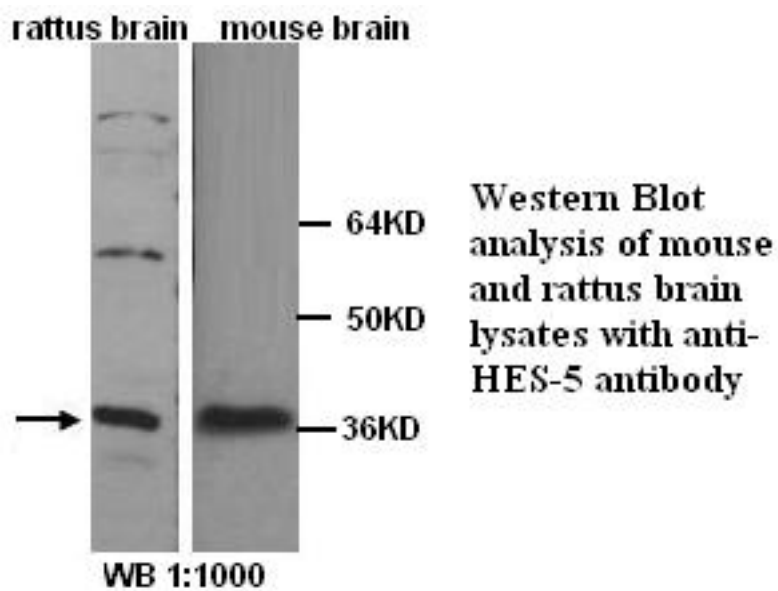
CatalogID:	LS-B6782
Validation:	This antibody replaces catalog number LS-C136917. It has been validated for use in the following assays: IHC-P.
Target:	hes family bHLH transcription factor 5 (HES5)
Synonyms:	HES5 Antibody, BHLHb38 Antibody, Hairy and enhancer of split 5 Antibody, Transcription factor HES-5 Antibody
Host	HES5 antibody was produced in Rabbit
Clonality:	Polyclonal
Immunogen Species:	HES5 antibody was raised against Human
Antigen Type:	Synthetic peptide
Immunogen:	HES5 antibody was raised against synthetic peptide
Specificity:	HES-5 antibody detects endogenous levels of HES-5 protein. Not tested with other proteins.
Epitope:	Internal
Reactivity:	Human, Mouse, Rat
Purification:	Affinity purified
Presentation:	Tris-glycine (without Mg ²⁺ , Ca ²⁺), pH 7.4, 0.02% sodium azide, 0.5% BSA
Recommended Storage:	Short term 4°C, long term aliquot and store at -20°C, avoid freeze thaw cycles.
Uses:	IHC - Paraffin (2.5 µg/ml), Western blot (1:500 - 1:1000), ELISA (1:10000) (Optimal dilution to be determined by the researcher)
Size:	50 µg
Concentration:	1 mg/ml

Immunohistochemistry Image:



Anti-HES5 antibody IHC of human brain, cerebellum. Immunohistochemistry of formalin-fixed, paraffin-embedded tissue after heat-induced antigen retrieval. Antibody LS-B6782 concentration 2.5 ug/ml.

Western Blot Image:



Western blot analysis on Rat Brain and Mouse Brain lysates using rabbit polyclonal antibody to HES5.

Laboratory Reagent For In Vitro Research Use Only

Not for resale without prior written consent from LifeSpan BioSciences, Inc.

Created on 9/24/2014

© 2014 LifeSpan BioSciences