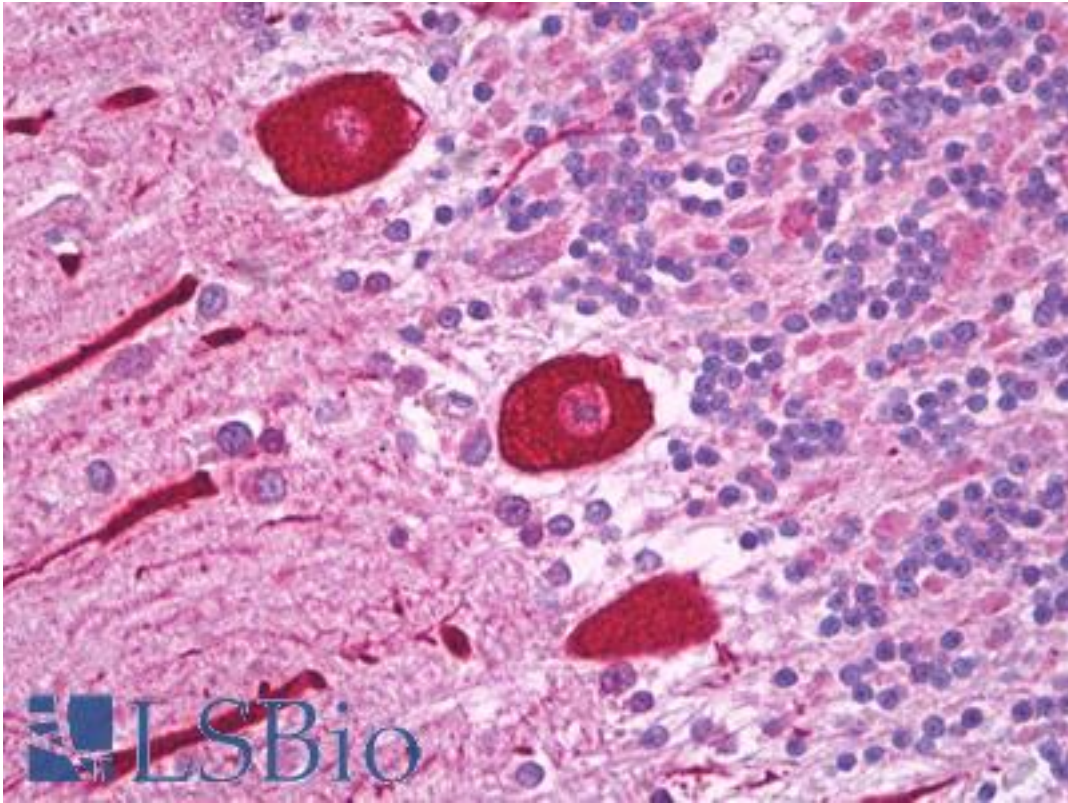


Alpha Tubulin Rat anti-Yeast Monoclonal (C-Terminus) (YL1/2) Antibody - LS-B6777 - LSBio

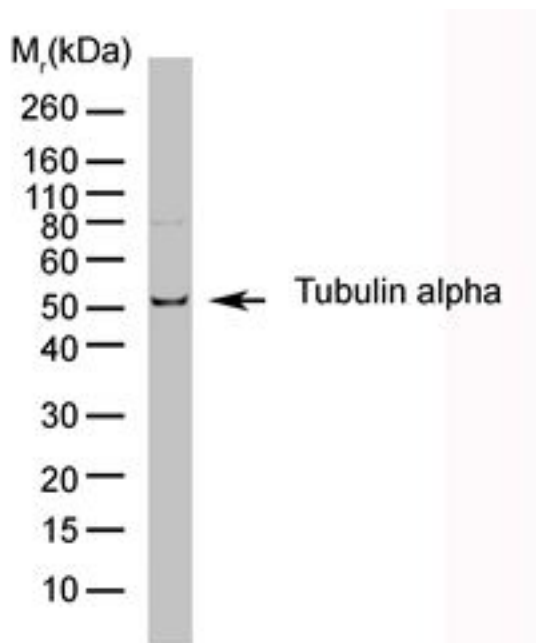
CatalogID:	LS-B6777
Validation:	This antibody replaces catalog number LS-C58679. It has been validated for use in the following assays: IHC-P.
Target:	Tubulin Alpha
Host	Tubulin Alpha antibody was produced in Rat
Clonality:	Monoclonal
Isotype:	IgG2a
Clone Name:	YL1/2
Immunogen Species:	Alpha Tubulin antibody was raised against Yeast
Antigen Type:	Purified protein
Immunogen:	Alpha Tubulin antibody was raised against yeast tubulin.
Specificity:	Recognizes the alpha subunit of tubulin, specifically binding tyrosylated Tubulin (Tyr-Tubulin). The epitope recognized by this antibody has been extensively studied and would appear to be a linear sequence requiring an aromatic residue at the C terminus, with the two adjacent amino acids being negatively charged (represented by Gly-Gly-Tyr in Tyr-Tubulin). The antibody has been used in epitope tagging procedures to detect proteins tagged with a C-terminal Gly-Gly-Phe epitope. These sequence requirements have been reported to result in some cross-reactivity with other proteins in certain circumstances, including E. coli rec A and oxidized actin. This product is routinely tested in ELISA on Tubulin
Epitope:	C-Terminus
Reactivity:	Yeast, Human, Avian, Echinoderm, Mammal
Purification:	Affinity purified
Presentation:	PBS, pH 7.4, 0.09% sodium azide.
Recommended Storage:	Long term: -20°C; Short term: +4°C; Avoid freeze-thaw cycles.
Uses:	IHC - Paraffin (5 µg/ml), IHC - Frozen, Western blot, Immunoprecipitation, ELISA (1:100 - 1:1000), Radioimmunoassay (Optimal dilution to be determined by the researcher)
Size:	50 µg
Concentration:	1 mg/ml

Immunohistochemistry Image:



Anti-Alpha Tubulin antibody IHC of human brain, cerebellum, Purkinje cells. Immunohistochemistry of formalin-fixed, paraffin-embedded tissue after heat-induced antigen retrieval. Antibody LS-B6777 concentration 5 ug/ml.

Western Blot Image:



HeLa whole cell lysate probed with Rat anti Tubulin Alpha.

Requested From:	Japan
Laboratory Reagent For In Vitro Research Use Only	
Not for resale without prior written consent from LifeSpan BioSciences, Inc.	
Created on 9/24/2014	
© 2014 LifeSpan BioSciences	