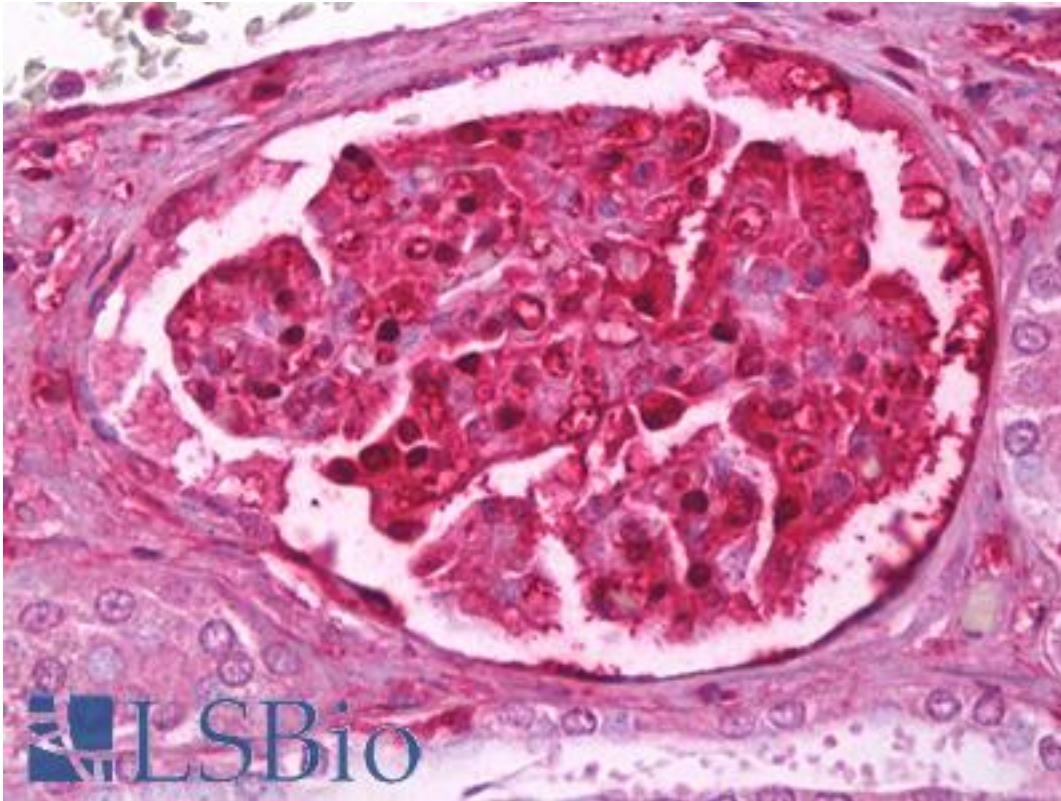


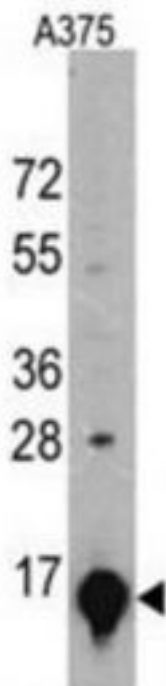
LGALS1 / Galectin 1 Mouse anti-Human Monoclonal (24CT661.4.3) Antibody - LS-B6776 - LSBio	
<b>CatalogID:</b>	LS-B6776
<b>Validation:</b>	This antibody replaces catalog number LS-C96443. It has been validated for use in the following assays: IHC-P.
<b>Target:</b>	lectin, galactoside-binding, soluble, 1 (LGALS1)
<b>Synonyms:</b>	LGALS1 Antibody, 14 kDa lectin Antibody, 14 kDa laminin-binding protein Antibody, 14 kd lectin Antibody, GAL1 Antibody, Galectin 1 Antibody, Galectin-1 Antibody, HBL Antibody, Lactose-binding lectin 1 Antibody, Galaptin Antibody, GBP Antibody, HLBP14 Antibody, HPL Antibody, S-Lac lectin 1 Antibody, Gal-1 Antibody
<b>Host</b>	LGALS1 antibody was produced in Mouse
<b>Clonality:</b>	Monoclonal
<b>Isotype:</b>	IgG1
<b>Clone Name:</b>	24CT661.4.3
<b>Immunogen Species:</b>	LGALS1 / Galectin 1 antibody was raised against Human
<b>Antigen Type:</b>	Purified protein
<b>Immunogen:</b>	LGALS1 / Galectin 1 antibody was raised against purified His-tagged GLT protein
<b>Reactivity:</b>	Human
<b>Purification:</b>	Ascites
<b>Presentation:</b>	Ascites, 0.09% sodium azide. Sourced in Ascites.
<b>Recommended Storage:</b>	Maintain refrigerated at 2-8°C for up to 6 months. For long term storage store at -20°C.
<b>Uses:</b>	IHC - Paraffin (1:50), Western blot (1:1000) (Optimal dilution to be determined by the researcher)
<b>Size:</b>	50 µl

**Immunohistochemistry Image:**



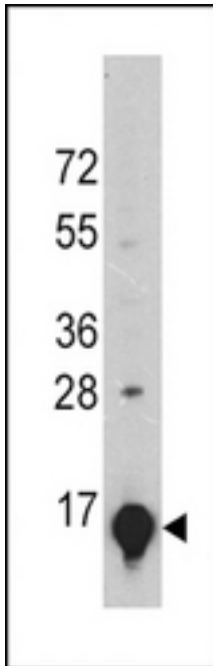
Anti-LGALS1 / Galectin 1 antibody IHC of human kidney, glomeruli. Immunohistochemistry of formalin-fixed, paraffin-embedded tissue after heat-induced antigen retrieval. Antibody LS-B6776 dilution 1:50.

**Western Blot Image:**



Western blot of GLT Monoclonal Antibody in A375 cell line lysates.

**Western Blot Image:**



Western blot analysis of GLT Monoclonal Antibody in A375 cell line lysates. GLT (arrow) was detected using the ascites Mab. (dilution 1:1000)

**Requested From:**

Japan

Laboratory Reagent For In Vitro Research Use Only

Not for resale without prior written consent from LifeSpan BioSciences, Inc.

Created on 9/24/2014

© 2014 LifeSpan BioSciences