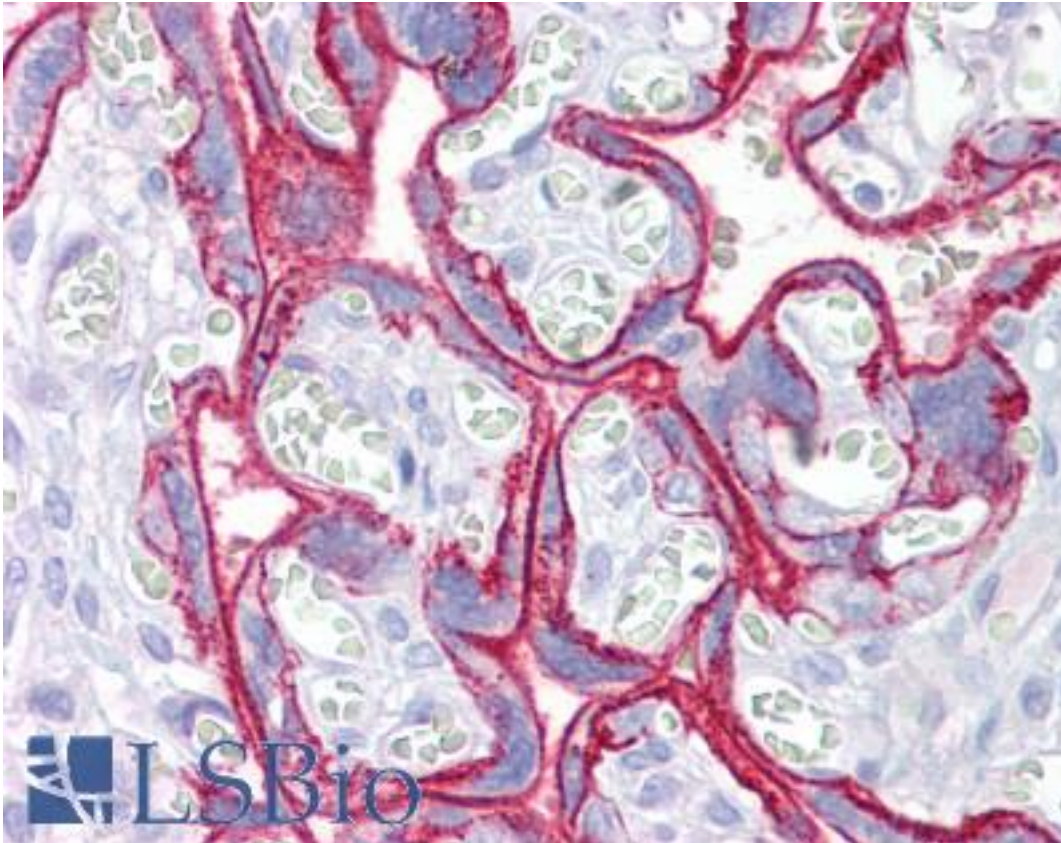


MCP / CD46 Mouse anti-Human Monoclonal (3F1) Antibody - LS-B6754 - LSBio

CatalogID:	LS-B6754
Validation:	This antibody replaces catalog number LS-C144556. It has been validated for use in the following assays: IHC-P.
Target:	CD46 molecule, complement regulatory protein
Synonyms:	CD46 Antibody, AHUS2 Antibody, CD46 antigen Antibody, MCP Antibody, Measles virus receptor Antibody, TLX Antibody, MIC10 Antibody, TRA2.10 Antibody, Membrane cofactor protein Antibody
Host	CD46 antibody was produced in Mouse
Clonality:	Monoclonal
Isotype:	IgG1,k
Clone Name:	3F1
Immunogen Species:	MCP / CD46 antibody was raised against Human
Antigen Type:	Recombinant protein
Immunogen:	MCP / CD46 antibody was raised against recombinant protein
Specificity:	44 kD protein. Diffuse and duplicated bands can be seen due to the glycosylation of CD46
Reactivity:	Human
Purification:	Purified
Reconstitution:	Distilled water
Presentation:	Lyophilized purified
Recommended Storage:	Store lyophilized at -20°C for 2 years. Stable at 4°C for at least one month or for six months in aliquots at -20°C. Avoid freeze/thaw cycles.
Uses:	IHC - Paraffin (10 µg/ml), ICC, Western blot, Flow Cytometry, ELISA (Optimal dilution to be determined by the researcher)
Size:	100 µg

Immunohistochemistry Image:



Anti-CD46 antibody IHC of human placenta. Immunohistochemistry of formalin-fixed, paraffin-embedded tissue after heat-induced antigen retrieval. Antibody LS-B6754 concentration 10 ug/ml.

Requested From:

Japan

Laboratory Reagent For In Vitro Research Use Only

Not for resale without prior written consent from LifeSpan BioSciences, Inc.

Created on 9/24/2014

© 2014 LifeSpan BioSciences