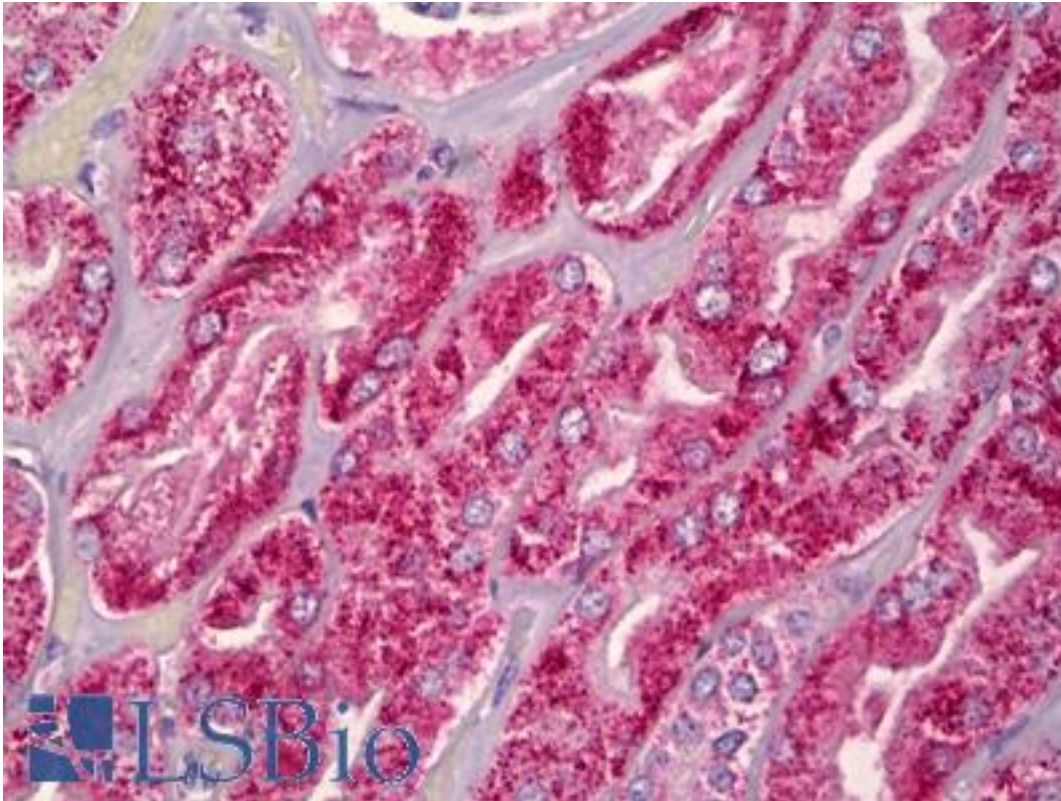


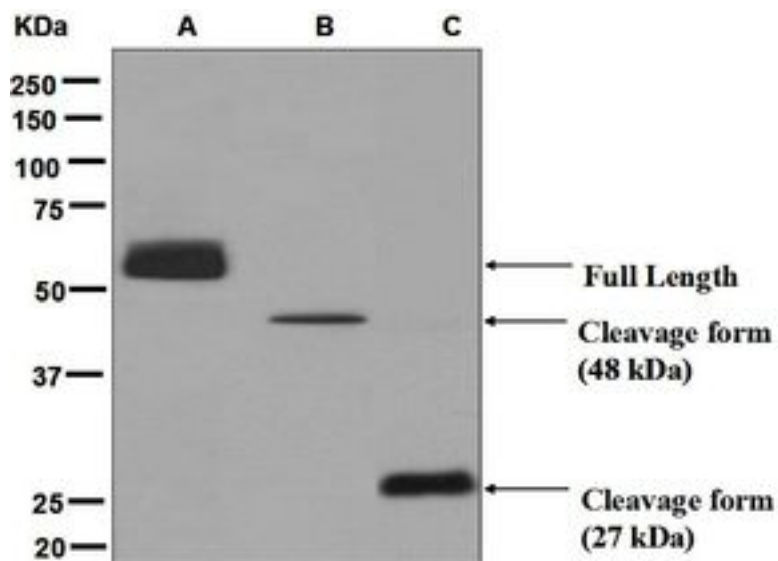
CPN1 / ACBP Rabbit anti-Human Monoclonal (Internal) (EPR6229) Antibody - LS-B6751 - LSBio	
<b>CatalogID:</b>	LS-B6751
<b>Validation:</b>	This antibody replaces catalog number LS-C138905. It has been validated for use in the following assays: IHC-P.
<b>Target:</b>	carboxypeptidase N, polypeptide 1 (CPN1)
<b>Synonyms:</b>	CPN1 Antibody, ACBP Antibody, Arginine carboxypeptidase Antibody, Anaphylatoxin inactivator Antibody, Carboxypeptidase K Antibody, Kininase-1 Antibody, Lysine carboxypeptidase Antibody, Kininase I Antibody, Serum carboxypeptidase N Antibody, SCPN Antibody, Plasma carboxypeptidase B Antibody, CPN Antibody
<b>Family / Subfamily:</b>	Exopeptidase / Metallopeptidase M14
<b>Host</b>	CPN1 antibody was produced in Rabbit
<b>Clonality:</b>	Monoclonal
<b>Clone Name:</b>	EPR6229
<b>Immunogen Species:</b>	CPN1 / ACBP antibody was raised against Human
<b>Antigen Type:</b>	Synthetic peptide
<b>Immunogen:</b>	CPN1 / ACBP antibody was raised against synthetic peptide
<b>Specificity:</b>	Human CPN1.
<b>Epitope:</b>	Internal
<b>Reactivity:</b>	Human
<b>Purification:</b>	Tissue culture supernatant
<b>Presentation:</b>	Tris-Glycine-NaCl or PBS, pH 7.2-7.4, 40-50% Glycerol, 0.01% sodium azide, 0.05% BSA
<b>Recommended Storage:</b>	Short term 4°C, long term aliquot and store at -20°C, avoid freeze thaw cycles.
<b>Uses:</b>	IHC - Paraffin (1:50), ICC (1:100 - 1:250), Western blot (1:1000 - 1:10000) (Optimal dilution to be determined by the researcher)
<b>Size:</b>	50 µl

**Immunohistochemistry Image:**



Anti-CPN1 antibody IHC of human kidney, tubules. Immunohistochemistry of formalin-fixed, paraffin-embedded tissue after heat-induced antigen retrieval. Antibody LS-B6751 dilution 1:50.

**Western Blot Image:**



Western blot analysis on (A) human plasma, (B) HepG2, and (C) fetal liver lysates using anti-CPN1 antibody.

Requested From:

Japan

Laboratory Reagent For In Vitro Research Use Only

Not for resale without prior written consent from LifeSpan BioSciences, Inc.

Created on 9/24/2014

© 2014 LifeSpan BioSciences