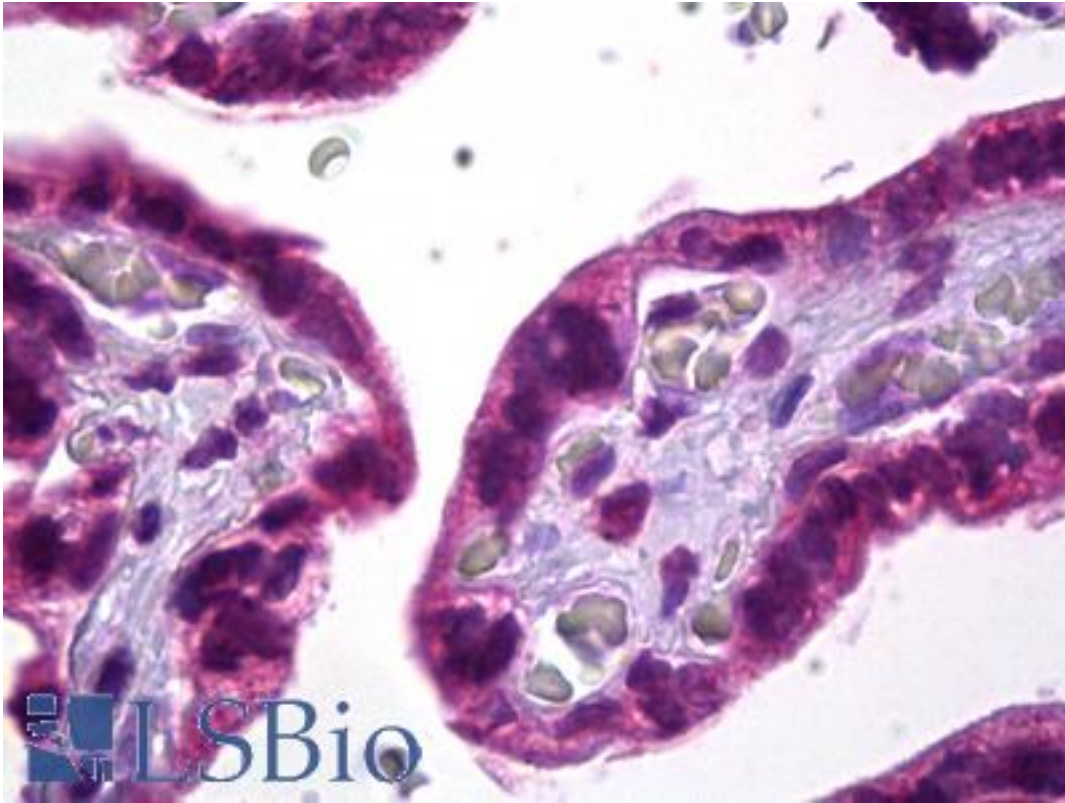


SKI Mouse anti-Human Monoclonal (G8) Antibody - LS-B6729 - LSBio	
CatalogID:	LS-B6729
Validation:	This antibody replaces catalog number LS-C83453. It has been validated for use in the following assays: IHC-P.
Target:	v-ski avian sarcoma viral oncogene homolog
Synonyms:	SKI Antibody, SKV Antibody, Proto-oncogene c-Ski Antibody, Ski oncogene Antibody, Ski oncoprotein Antibody, SGS Antibody
Host	SKI antibody was produced in Mouse
Clonality:	Monoclonal
Isotype:	IgG1
Clone Name:	G8
Immunogen Species:	SKI antibody was raised against Human
Immunogen:	SKI antibody was raised against full length recombinant v-SKI.
Specificity:	Recognizes human SKI protein. Predicted to recognize SKI protein from Chicken, Xenopus, Mouse, and Rat species.
Reactivity:	Human, Mouse, Rat, Chicken, Xenopus
Purification:	Protein G purified
Presentation:	PBS, pH 7.4. Sourced in Ascites.
Recommended Storage:	Long term: -70°C; Short term: +4°C
Usage Summary:	Western Blot: Predicted molecular weight of v-ski is 55 kD; full-length ski ranges from ~95 kD up to ~115 kD for hyperphosphorylated ski. Immunocytochemistry: ski is a nuclear protein.
Uses:	IHC - Paraffin (10 µg/ml), ICC (1 - 10 µg/ml), Western blot (1 - 5 µg/ml), Immunoprecipitation (Optimal dilution to be determined by the researcher)
Size:	50 µg
Concentration:	1 mg/ml

Immunohistochemistry Image:



Anti-SKI antibody IHC of human placenta. Immunohistochemistry of formalin-fixed, paraffin-embedded tissue after heat-induced antigen retrieval. Antibody LS-B6729 concentration 10 ug/ml.

Requested From:

Japan

Laboratory Reagent For In Vitro Research Use Only

Not for resale without prior written consent from LifeSpan BioSciences, Inc.

Created on 9/24/2014

© 2014 LifeSpan BioSciences