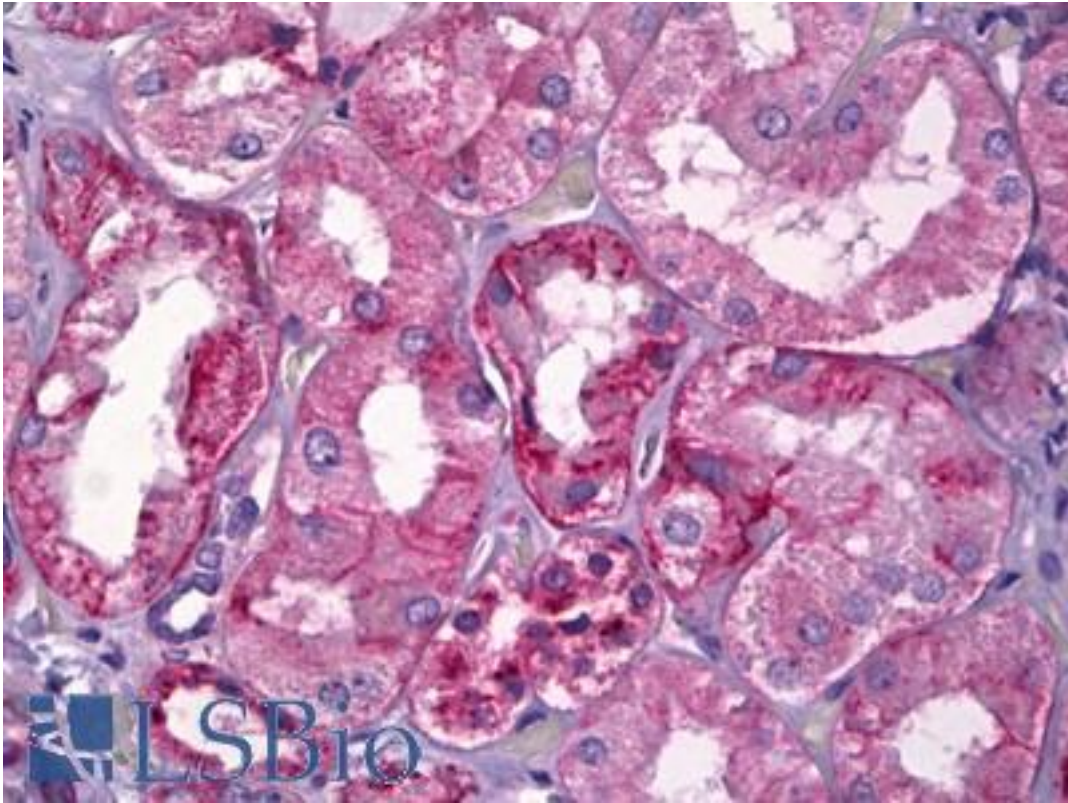


**CDH6 / K Cadherin Mouse anti-Human Monoclonal (2B6) Antibody - LS-B6726 - LSBio**

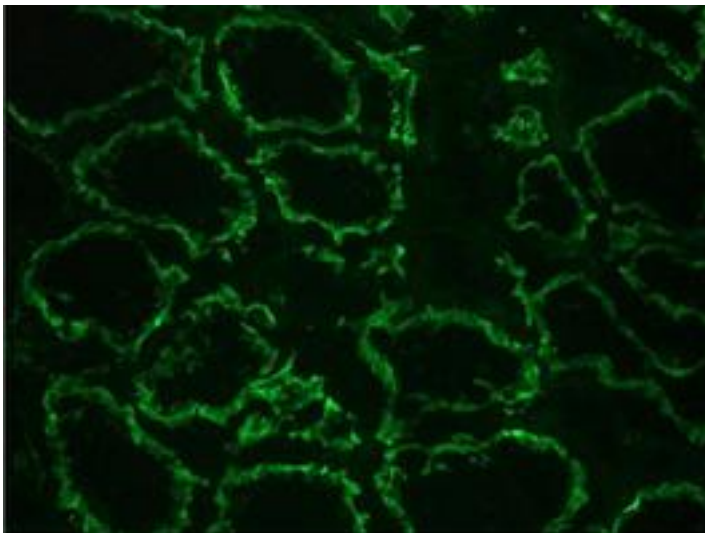
<b>CatalogID:</b>	LS-B6726
<b>Validation:</b>	This antibody replaces catalog number LS-C146710. It has been validated for use in the following assays: IHC-P.
<b>Target:</b>	cadherin 6, type 2, K-cadherin (fetal kidney) (CDH6)
<b>Synonyms:</b>	CDH6 Antibody, K Cadherin Antibody, K-cadherin Antibody, CAD6 Antibody, Cadherin-6 Antibody, Fetal kidney cadherin Antibody, KCAD Antibody, Kidney cadherin Antibody
<b>Family / Subfamily:</b>	Cadherin / not assigned-Cadherin
<b>Host</b>	CDH6 antibody was produced in Mouse
<b>Clonality:</b>	Monoclonal
<b>Isotype:</b>	IgG1
<b>Clone Name:</b>	2B6
<b>Immunogen Species:</b>	CDH6 / K Cadherin antibody was raised against Human
<b>Immunogen:</b>	CDH6 / K Cadherin antibody was raised against extracellular domain of human cadherin-6-GST fusion protein
<b>Specificity:</b>	Recognizes the extracellular domain of cadherin-6.
<b>Reactivity:</b>	Human, Rat
<b>Purification:</b>	Purified
<b>Presentation:</b>	PBS containing 0.09% sodium azide
<b>Recommended Storage:</b>	Short term 4°C, long term aliquot and store at -20°C, avoid freeze thaw cycles. Store undiluted.
<b>Usage Summary:</b>	A PBS buffer containing 0.1 mM CaCl <sub>2</sub> and 0.1 mM MgCl <sub>2</sub> is recommended for immunohistochemistry on frozen tissues.
<b>Uses:</b>	IHC - Paraffin (10 - 20 µg/ml), IHC - Frozen (1:25 - 1:50), ICC, Western blot (1:25 - 1:250) (Optimal dilution to be determined by the researcher)
<b>Size:</b>	50 µg
<b>Concentration:</b>	1 mg/ml

**Immunohistochemistry Image:**



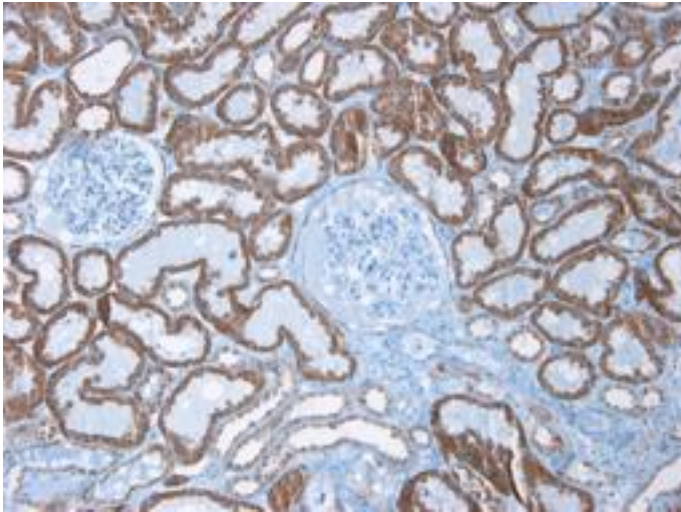
Anti-CDH6 / K Cadherin antibody IHC of human kidney, tubules. Immunohistochemistry of formalin-fixed, paraffin-embedded tissue after heat-induced antigen retrieval. Antibody LS-B6726 concentration 10 ug/ml.

**Immunohistochemistry Image:**



Immunohistochemistry on frozen section of human kidney: positive reactivity in renal tubules (epithelium)

**Immunohistochemistry Image:**



Immunohistochemistry on paraffin section of human kidney

**Requested From:**

Japan

Laboratory Reagent For In Vitro Research Use Only

Not for resale without prior written consent from LifeSpan BioSciences, Inc.

Created on 9/24/2014

© 2014 LifeSpan BioSciences