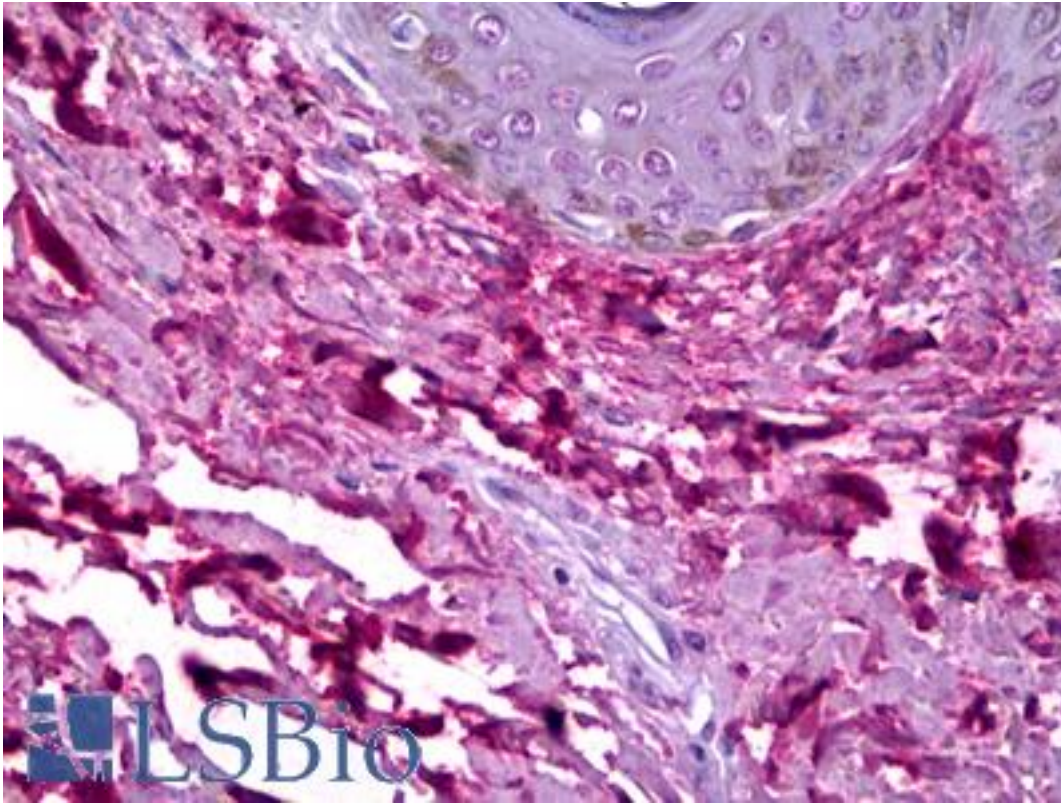


Collagen I Mouse anti-Bovine Monoclonal (COL-1) Antibody - LS-B6723 - LSBio

| | |
|-----------------------------|--|
| CatalogID: | LS-B6723 |
| Validation: | This antibody replaces catalog number LS-C79487. It has been validated for use in the following assays: IHC-P. |
| Target: | Collagen I |
| Host | Collagen I antibody was produced in Mouse |
| Clonality: | Monoclonal |
| Isotype: | IgG1 |
| Clone Name: | COL-1 |
| Immunogen Species: | Collagen I antibody was raised against Bovine |
| Antigen Type: | Native protein |
| Immunogen: | Collagen I antibody was raised against full length bovine native protein (purified). Epitope: The epitope recognized by the antibody may be sensitive to routine formalin fixation and paraffin embedding. |
| Specificity: | Recognizes the native (helical) form of collagen type I using ELISA and dot-blot. Does not react with the thermally-denatured molecule. The antibody shows no cross-reactivity with collagen types II, III, IV, V, VI, VII, IX, X and XI. |
| Reactivity: | Bovine, Human, Rat, Pig, Rabbit, Deer |
| Purification: | Ascites |
| Presentation: | 15 mM sodium azide. |
| Recommended Storage: | Short term 4°C, long term aliquot and store at -20°C, avoid freeze thaw cycles. |
| Usage Summary: | Suitable for use in ELISA, Western Blot, Immunofluorescence and Immunohistochemistry. In testing of acetone-fixed or unfixed frozen sections, strong staining of connective tissue fibers is seen. Epitope can be sensitive to formalin fixation, will not work with over fixed tissues. |
| Uses: | IHC - Paraffin (1:50), IHC - Frozen, IHC - 4% paraformaldehyde, Immunofluorescence, ELISA (Optimal dilution to be determined by the researcher) |
| Size: | 50 µl |

Immunohistochemistry Image:



Anti-Collagen I antibody IHC of human skin, dermal collagen. Immunohistochemistry of formalin-fixed, paraffin-embedded tissue after heat-induced antigen retrieval. Antibody LS-B6723 dilution 1:50.

Requested From:

Japan

Laboratory Reagent For In Vitro Research Use Only

Not for resale without prior written consent from LifeSpan BioSciences, Inc.

Created on 9/24/2014

© 2014 LifeSpan BioSciences