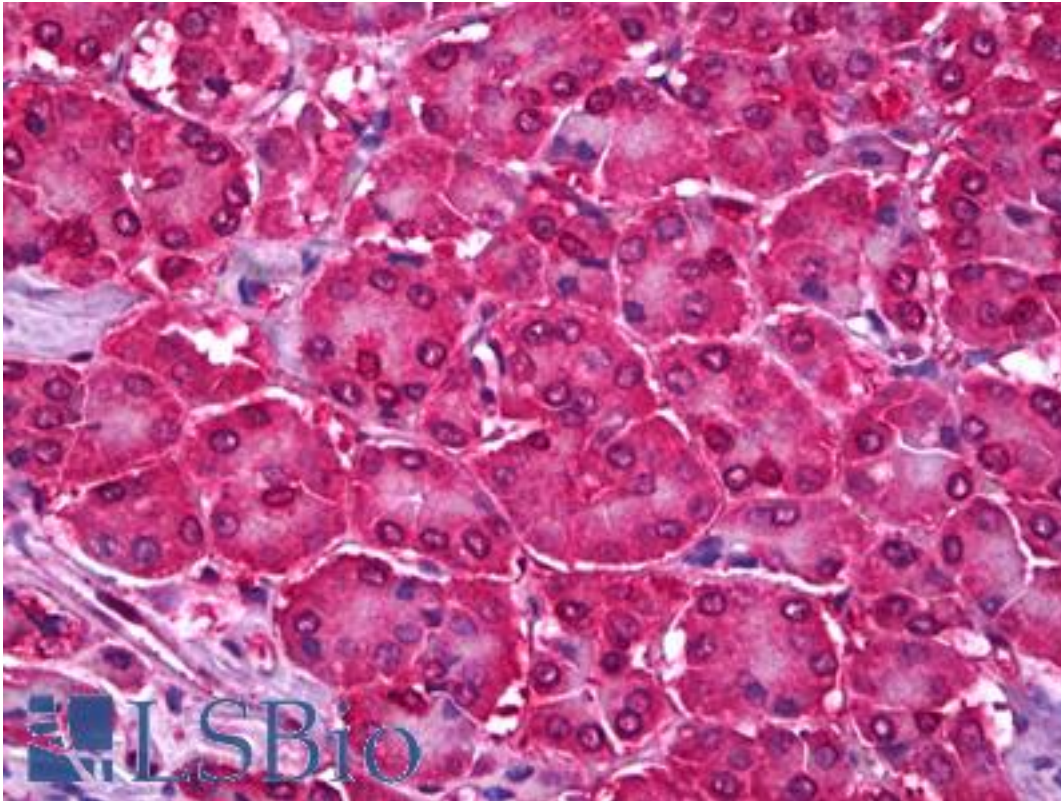


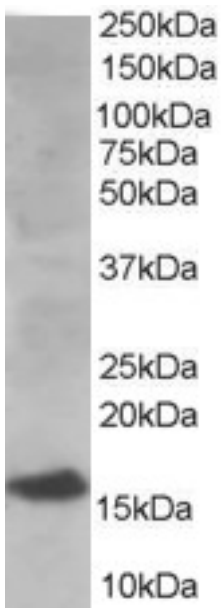
UBE2I / UBC9 Goat anti-Human Polyclonal (N-Terminus) Antibody - LS-B6718 - LSBio	
<b>CatalogID:</b>	LS-B6718
<b>Validation:</b>	This antibody replaces catalog number LS-C20222. It has been validated for use in the following assays: IHC-P.
<b>Target:</b>	ubiquitin-conjugating enzyme E2I (UBE2I)
<b>Synonyms:</b>	UBE2I Antibody, C358B7.1 Antibody, SUMO-conjugating enzyme UBC9 Antibody, UBC9 Antibody, SUMO-protein ligase Antibody, UBCE9 Antibody, Ubiquitin carrier protein 9 Antibody, Ubiquitin carrier protein I Antibody, Ubiquitin-protein ligase I Antibody, p18 Antibody, SUMO-1-protein ligase Antibody, Ubiquitin conjugating enzyme 9 Antibody, Ubiquitin-protein ligase E2I Antibody
<b>Host</b>	UBE2I antibody was produced in Goat
<b>Clonality:</b>	Polyclonal
<b>Immunogen Species:</b>	UBE2I / UBC9 antibody was raised against Human
<b>Antigen Type:</b>	Synthetic peptide
<b>Immunogen:</b>	UBE2I / UBC9 antibody was raised against synthetic peptide SGIALSRLAQERK-C from the N-terminus of human UBE2I / UBC9 (NP_003336.1; NP_919235.1; NP_919236.1; NP_919237.1). Percent identity by BLAST analysis: Human, Gorilla, Gibbon, Monkey, Marmoset, Mouse, Rat, Hamster, Elephant, Panda, Bovine, Bat, Horse, Rabbit, Opossum, Turkey, Chicken, Xenopus, Trout, Seabass, Catfish, Salmon, Smelt, Sablefish, Stickleback, Zebrafish (100%); Frog, Pufferfish (92%); Sea anemone, Slime mold (85%).
<b>Specificity:</b>	Human UBE2I / UBC9. This antibody is expected to recognize all reported isoforms (NP_003336.1, NP_919235.1, NP_919236.1 and NP_919237.1).
<b>Epitope:</b>	N-Terminus
<b>Reactivity:</b>	Human, Gorilla, Gibbon, Monkey, Mouse, Rat, Bat, Bovine, Hamster, Horse, Rabbit, Chicken, Xenopus, Zebrafish
<b>Purification:</b>	Immunoaffinity purified
<b>Presentation:</b>	Tris-buffered saline, pH 7.3, 0.5% BSA, 0.02% sodium azide
<b>Recommended Storage:</b>	Short term 4°C, long term aliquot and store at -20°C, avoid freeze thaw cycles.
<b>Uses:</b>	IHC - Paraffin (5 µg/ml), Western blot (0.1 - 0.3 µg/ml), ELISA (1:64000) (Optimal dilution to be determined by the researcher)
<b>Size:</b>	50 µg
<b>Concentration:</b>	0.5 mg/ml

**Immunohistochemistry Image:**



Anti-UBE2I antibody IHC of human pancreas. Immunohistochemistry of formalin-fixed, paraffin-embedded tissue after heat-induced antigen retrieval. Antibody LS-B6718 concentration 5 ug/ml.

**Western Blot Image:**



(0.1 ug/ml) Staining of Human Kidney lysate (35 ug protein in RIPA buffer). Primary incubation was 1 hour. Detected by chemiluminescence.

**Requested From:**

Japan

Laboratory Reagent For In Vitro Research Use Only

Not for resale without prior written consent from LifeSpan BioSciences, Inc.

Created on 9/24/2014

© 2014 LifeSpan BioSciences