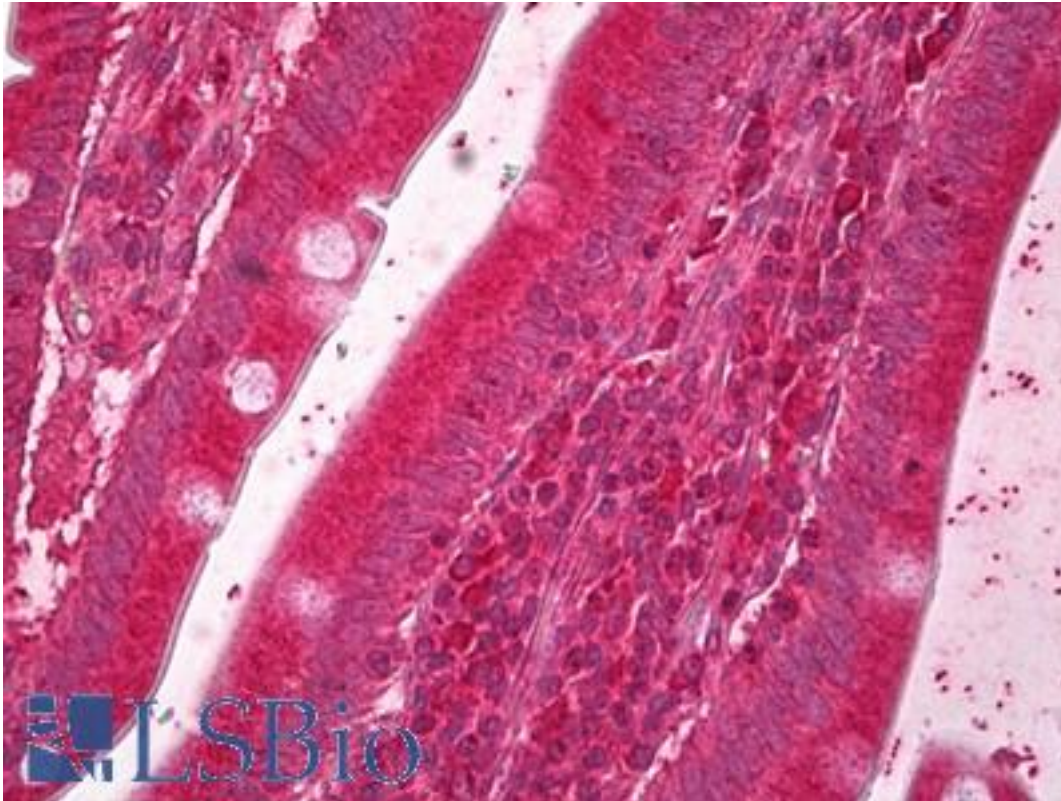


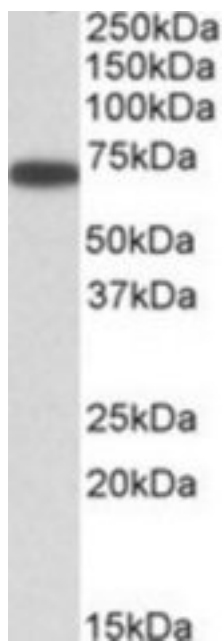
ERO1A / ERO1L Goat anti-Human Polyclonal (Internal) Antibody - LS-B6717 - LSBio	
CatalogID:	LS-B6717
Validation:	This antibody replaces catalog number LS-C139777. It has been validated for use in the following assays: IHC-Fx.
Target:	ERO1-like (<i>S. cerevisiae</i>) (ERO1L)
Synonyms:	ERO1L Antibody, ERO1-like (<i>S. cerevisiae</i>) Antibody, ERO1 (<i>S. cerevisiae</i>)-like Antibody, ERO1A Antibody, ERO1-alpha Antibody, ERO1-L-alpha Antibody, ERO1-like protein alpha Antibody, Oxidoreductin-1-L-alpha Antibody, ERO1-L Antibody
Host	ERO1L antibody was produced in Goat
Clonality:	Polyclonal
Immunogen Species:	ERO1A / ERO1L antibody was raised against Human
Antigen Type:	Synthetic peptide
Immunogen:	ERO1A / ERO1L antibody was raised against synthetic peptide C-QSDEVDPDGIKSASY from an internal region of human ERO1L (NP_055399.1). Percent identity by BLAST analysis: Human, Gorilla, Gibbon, Monkey, Elephant, Panda, Dog, Bat, Rabbit (100%); Marmoset, Mouse, Rat, Bovine, Horse, Pig (93%); Turkey, Platypus (86%).
Specificity:	Human ERO1L.
Epitope:	Internal
Reactivity:	Human, Gorilla, Gibbon, Bat, Dog, Rabbit
Predicted Reactivity:	Monkey, Mouse, Rat, Bovine, Horse, Pig
Purification:	Immunoaffinity purified
Presentation:	Tris-buffered saline, pH 7.3, 0.5% BSA, 0.02% sodium azide
Recommended Storage:	Short term 4°C, long term aliquot and store at -20°C, avoid freeze thaw cycles.
Usage Summary:	Peptide ELISA: antibody detection limit dilution 1:32000. Western blot: Approx 70kD band observed in lysates of cell lines A431, HeLa, Jurkat (calculated MW of 54.4kD according to NP_055399.1). The observed molecular weight corresponds to the glycosylated form. Recommended concentration: 0.1-0.3 ug/ml.
Uses:	IHC - Paraffin (5 µg/ml), Western blot (0.1 - 0.3 µg/ml), ELISA (1:32000) (Optimal dilution to be determined by the researcher)
Size:	50 µg
Concentration:	0.5 mg/ml

Immunohistochemistry Image:



Anti-ERO1L antibody IHC of human small intestine. Immunohistochemistry of formalin-fixed, paraffin-embedded tissue after heat-induced antigen retrieval. Antibody LS-B6717 concentration 5 ug/ml.

Western Blot Image:



ERO1L antibody (0.3 ug/ml) staining of A431 lysate (35 ug protein/ml in RIPA buffer). Primary incubation was 1 hour. Detected by chemiluminescence.

Requested From:	Japan
Laboratory Reagent For In Vitro Research Use Only	
Not for resale without prior written consent from LifeSpan BioSciences, Inc.	
Created on 9/24/2014	
© 2014 LifeSpan BioSciences	