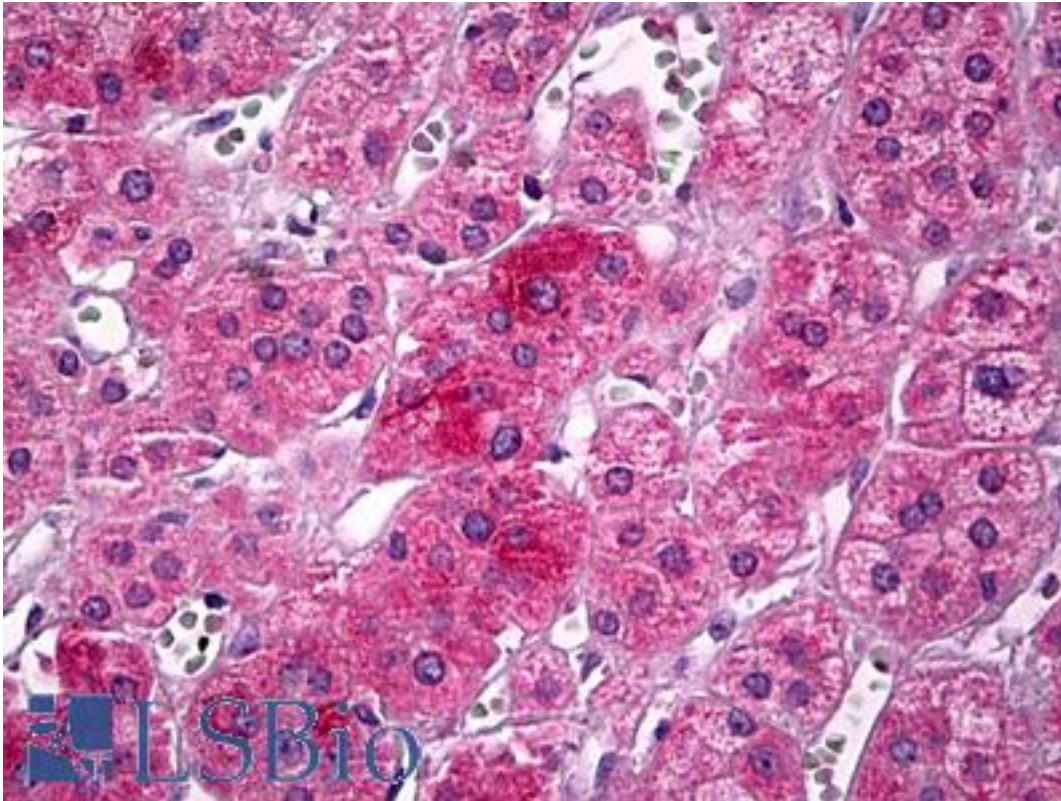


UBP1 Goat anti-Human Polyclonal (Internal) Antibody - LS-B6715 - LSBio	
<b>CatalogID:</b>	LS-B6715
<b>Validation:</b>	This antibody replaces catalog number LS-C112675. It has been validated for use in the following assays: IHC-P.
<b>Target:</b>	upstream binding protein 1 (LBP-1a) (UBP1)
<b>Synonyms:</b>	UBP1 Antibody, LBP1 Antibody, LBP-1a Antibody, LBP1A Antibody, LBP1B Antibody, Transcription factor LBP-1 Antibody, Upstream-binding protein 1 Antibody, LBP-1B Antibody
<b>Host</b>	UBP1 antibody was produced in Goat
<b>Clonality:</b>	Polyclonal
<b>Immunogen Species:</b>	UBP1 antibody was raised against Human
<b>Antigen Type:</b>	Synthetic peptide
<b>Immunogen:</b>	UBP1 antibody was raised against synthetic peptide C-PNHQGDGASQTSGE from an internal region of human UB1 (NP_055332.3; NP_001121632.1). Percent identity with other species by BLAST analysis: Human (100%), Chimpanzee (93%), Gorilla (93%), Orangutan (93%), Gibbon (93%), Monkey (93%), Marmoset (86%), Mouse (86%), Rabbit (86%).
<b>Specificity:</b>	Human UB1. Reported variants represent identical protein: NP_001121633.1, NP_055332.3.
<b>Epitope:</b>	Internal
<b>Reactivity:</b>	Human
<b>Predicted Reactivity:</b>	Chimpanzee, Gorilla, Orangutan, Gibbon, Monkey
<b>Purification:</b>	Immunoaffinity purified
<b>Presentation:</b>	Tris-buffered saline, pH 7.3, 0.5% BSA, 0.02% sodium azide
<b>Recommended Storage:</b>	Short term 4°C, long term aliquot and store at -20°C, avoid freeze thaw cycles.
<b>Usage Summary:</b>	Peptide ELISA: antibody detection limit dilution 1:2000. Western blot: Preliminary experiments in Human Kidney, Human Adrenal gland, HeLa and HepG2 lysates gave no specific signal but low background (at antibody concentration up to 2 ug/ml).
<b>Uses:</b>	IHC - Paraffin (10 µg/ml), ELISA (1:2000) (Optimal dilution to be determined by the researcher)
<b>Size:</b>	50 µg
<b>Concentration:</b>	0.5 mg/ml

**Immunohistochemistry Image:**



Anti-UBP1 antibody IHC of human adrenal medulla. Immunohistochemistry of formalin-fixed, paraffin-embedded tissue after heat-induced antigen retrieval. Antibody LS-B6715 concentration 10 ug/ml.

**Requested From:**

Japan

Laboratory Reagent For In Vitro Research Use Only

Not for resale without prior written consent from LifeSpan BioSciences, Inc.

Created on 9/24/2014

© 2014 LifeSpan BioSciences