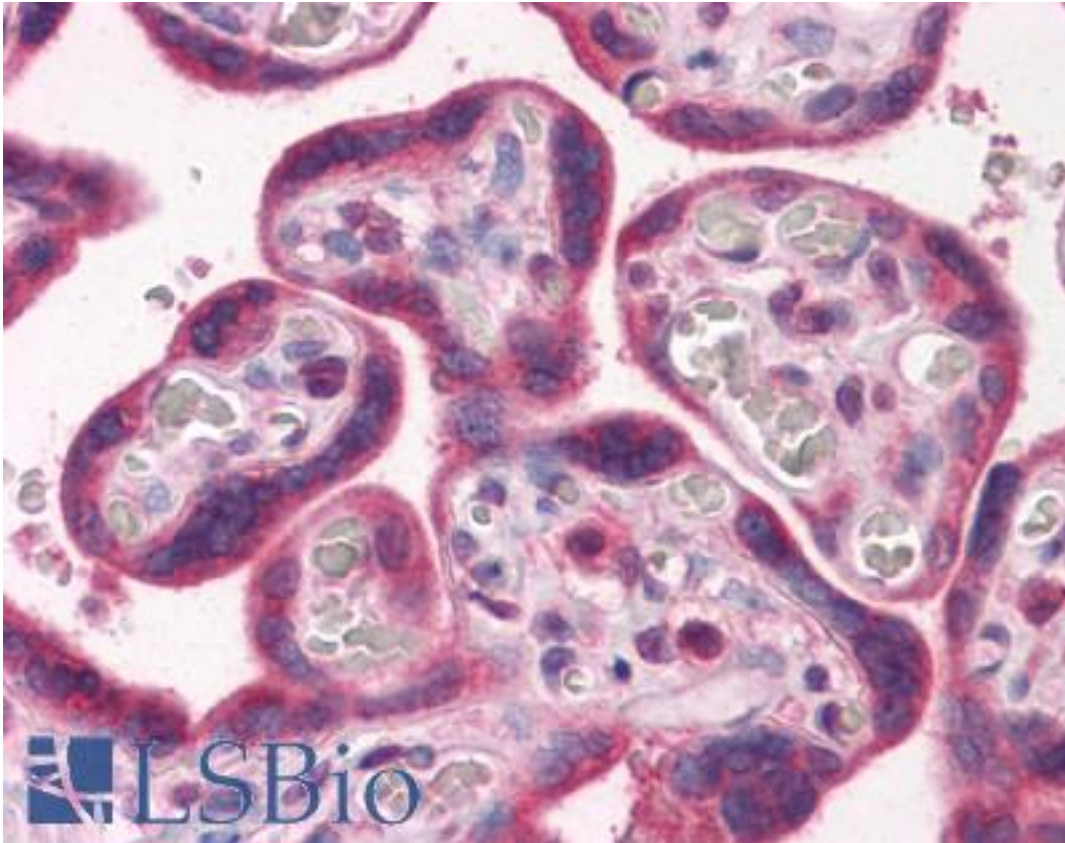


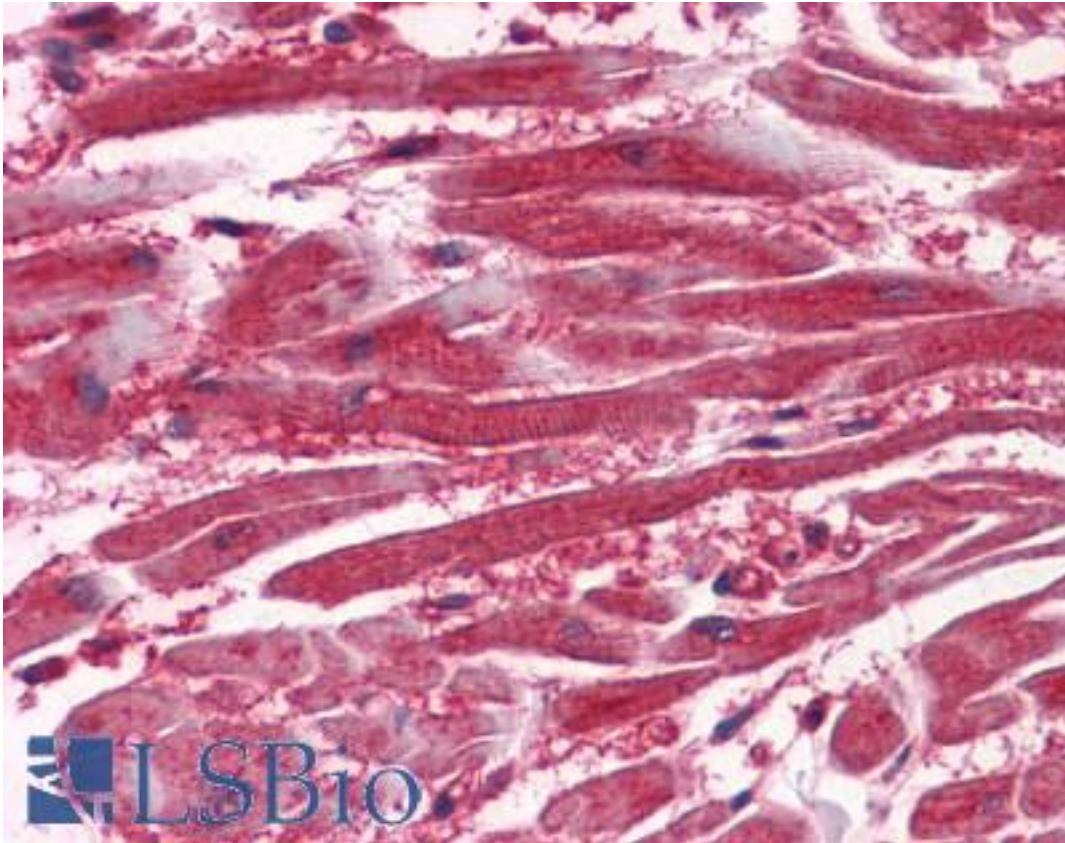
FLKT1 / FLT-1 / VEGFR1 Mouse anti-Human Monoclonal (aa1251-1338) Antibody - LS-B6701 - LSBio	
<b>CatalogID:</b>	LS-B6701
<b>Validation:</b>	This antibody replaces catalog number LS-C6856. It has been validated for use in the following assays: IHC-P.
<b>Target:</b>	fms-related tyrosine kinase 1 (FLT1)
<b>Synonyms:</b>	FLT1 Antibody, FLT Antibody, FLT-1 Antibody, Fms-related tyrosine kinase 1 Antibody, SFlt1 Antibody, VEGF-r1 Antibody, VEG-R1 Antibody, Tyrosine-protein kinase FRT Antibody, VEGFR-1 Antibody, Fms-like tyrosine kinase 1 Antibody, FRT Antibody, VEGF receptor 1 Antibody, VEGFf-r1 Antibody, VEGFR1 Antibody
<b>Family / Subfamily:</b>	Protein Kinase / VEGF Receptor
<b>Host</b>	FLT1 antibody was produced in Mouse
<b>Clonality:</b>	Monoclonal
<b>Isotype:</b>	IgG1,k
<b>Immunogen Species:</b>	FLKT1 / FLT-1 / VEGFR1 antibody was raised against Human
<b>Antigen Type:</b>	Fusion protein
<b>Immunogen:</b>	FLKT1 / FLT-1 / VEGFR1 antibody was raised against gST fusion protein corresponding to aa1251-1338 of human Flt-1.
<b>Specificity:</b>	Recognizes human Flt-1, Mr ~180kD.
<b>Epitope:</b>	aa1251-1338
<b>Reactivity:</b>	Human
<b>Purification:</b>	Protein G purified
<b>Presentation:</b>	0.1 M Tris-glycine, pH 7.4, 0.15 M sodium chloride, 0.05% sodium azide, 30% glycerol.
<b>Recommended Storage:</b>	Long term: -20°C; Short term: +4°C. Avoid repeat freeze-thaw cycles.
<b>Usage Summary:</b>	Western Blot Analysis: 0.5-2 ug/ml detected Flt-1 in Human umbilical vein endothelium (HUVEC) membrane preps.
<b>Uses:</b>	IHC - Paraffin (10 µg/ml), Western blot (Optimal dilution to be determined by the researcher)
<b>Uses Not Recommended:</b>	Immunoprecipitation
<b>Size:</b>	100 µg
<b>Concentration:</b>	1 mg/ml

**Immunohistochemistry Image:**



Anti-VEGFR-1 antibody IHC of human placenta. Immunohistochemistry of formalin-fixed, paraffin-embedded tissue after heat-induced antigen retrieval. Antibody LS-B6701 concentration 10 ug/ml.

**Immunohistochemistry Image:**



Anti-VEGFR-1 antibody IHC of human heart. Immunohistochemistry of formalin-fixed, paraffin-embedded tissue after heat-induced antigen retrieval. Antibody LS-B6701 concentration 10 ug/ml.

**Requested From:**

Japan

Laboratory Reagent For In Vitro Research Use Only

Not for resale without prior written consent from LifeSpan BioSciences, Inc.

Created on 9/24/2014

© 2014 LifeSpan BioSciences