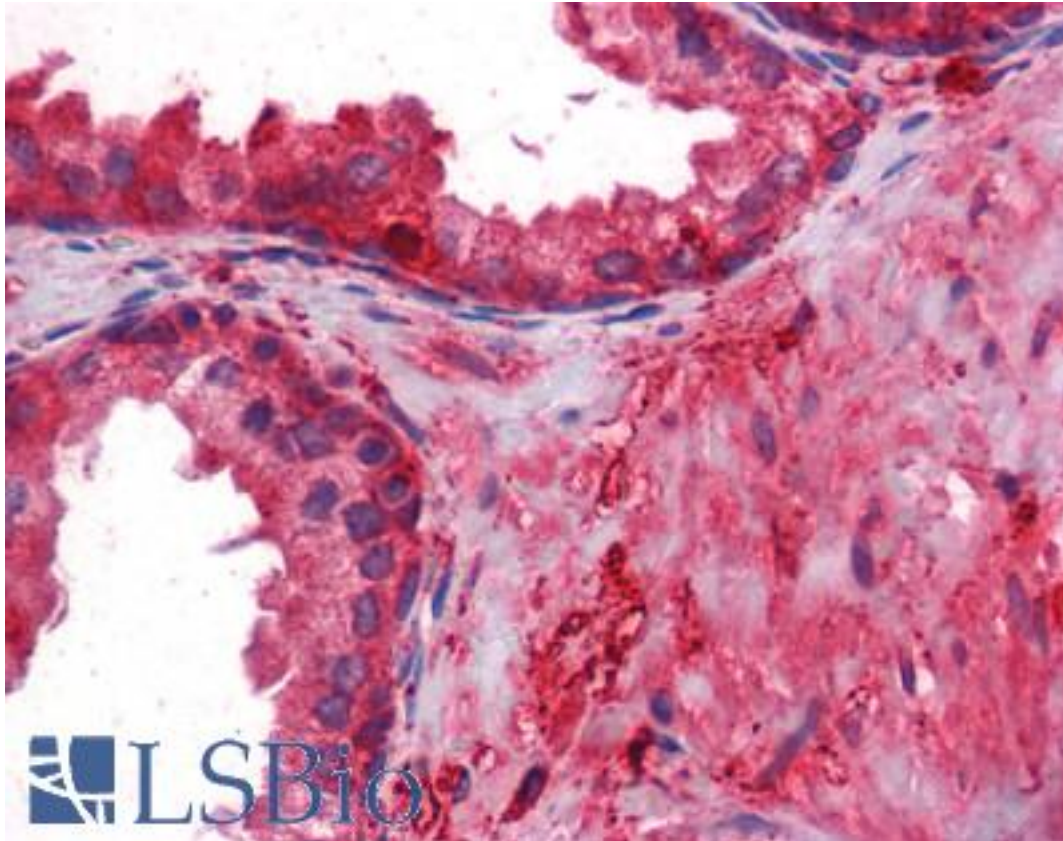


PROZ / Protein Z Mouse anti-Human Monoclonal (2B4) Antibody - LS-B6697 - LSBio

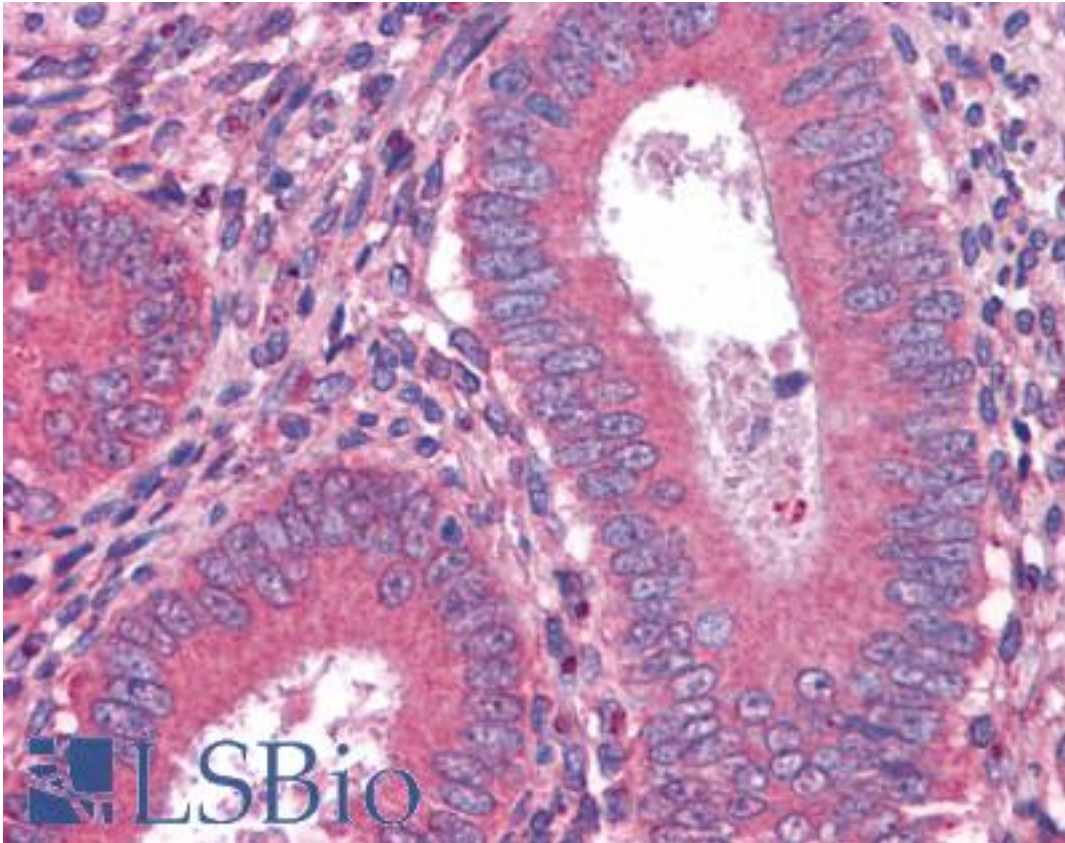
CatalogID:	LS-B6697
Validation:	This antibody replaces catalog number LS-C108861. It has been validated for use in the following assays: IHC-P.
Target:	protein Z, vitamin K-dependent plasma glycoprotein (PROZ)
Synonyms:	PROZ Antibody, Vitamin K-dependent protein Z Antibody, Protein Z Antibody, PZ Antibody
Host	PROZ antibody was produced in Mouse
Clonality:	Monoclonal
Isotype:	IgG1
Clone Name:	2B4
Immunogen Species:	PROZ / Protein Z antibody was raised against Human
Immunogen:	PROZ / Protein Z antibody was raised against purified recombinant fragment of PROZ expressed in E. coli.
Specificity:	Human PROZ
Reactivity:	Human
Purification:	Ascites
Presentation:	Ascites fluid, 0.03% sodium azide. Sourced in Ascites.
Recommended Storage:	Long term: -20°C; Short term: +4°C. Avoid repeat freeze-thaw cycles.
Uses:	IHC - Paraffin (1:200 - 1:400), Western blot (1:500 - 1:2000), ELISA (1:10000) (Optimal dilution to be determined by the researcher)
Size:	50 µl

Immunohistochemistry Image:



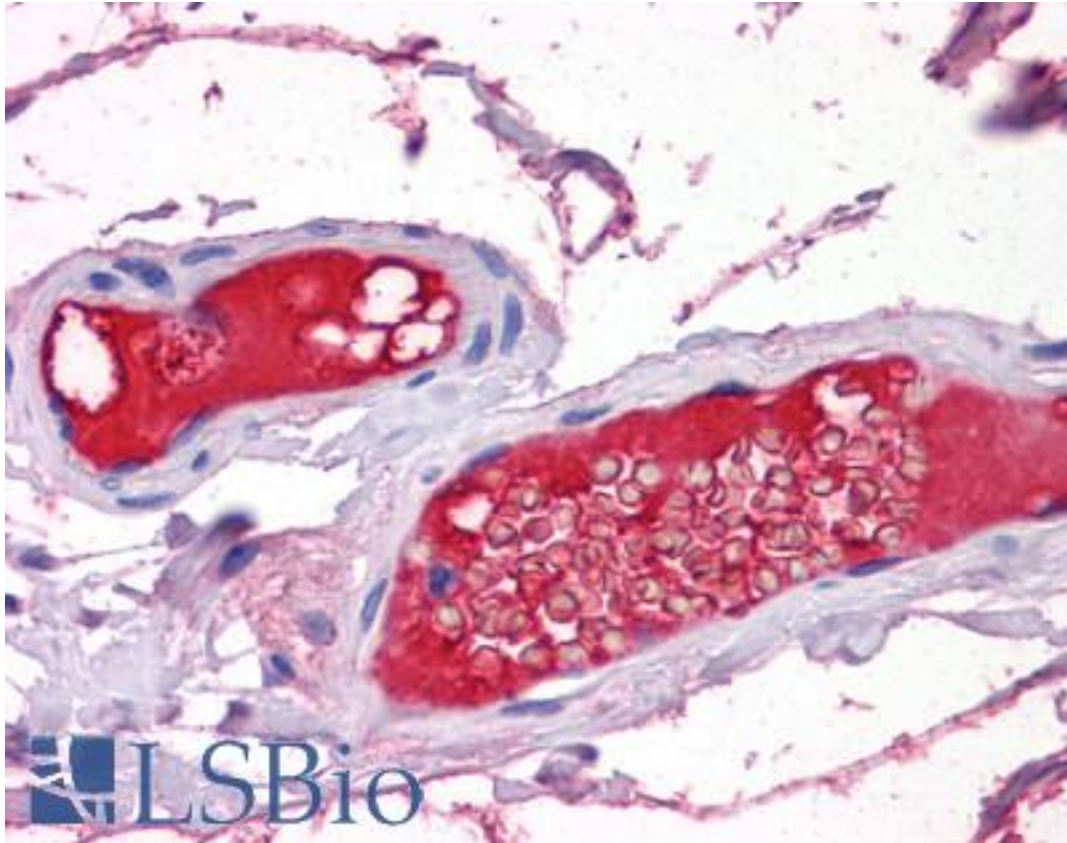
Anti-PROZ antibody IHC of human prostate. Immunohistochemistry of formalin-fixed, paraffin-embedded tissue after heat-induced antigen retrieval. Antibody LS-B6697 dilution 1:200.

Immunohistochemistry Image:



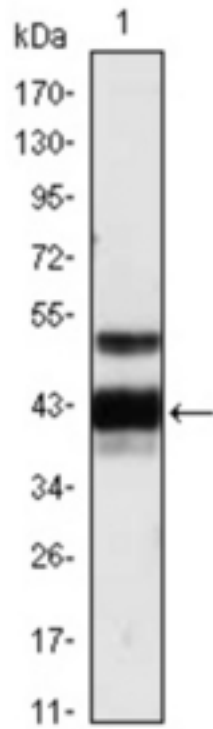
Anti-PROZ antibody IHC of human uterus. Immunohistochemistry of formalin-fixed, paraffin-embedded tissue after heat-induced antigen retrieval. Antibody LS-B6697 dilution 1:200.

Immunohistochemistry Image:



Anti-PROZ antibody IHC of human small intestine, vessels. Immunohistochemistry of formalin-fixed, paraffin-embedded tissue after heat-induced antigen retrieval. Antibody LS-B6697 dilution 1:200.

Western Blot Image:



Western blot of anti-PROZ monoclonal antibody against human plasma (1).

Requested From:

Japan

Laboratory Reagent For In Vitro Research Use Only

Not for resale without prior written consent from LifeSpan BioSciences, Inc.

Created on 9/24/2014

© 2014 LifeSpan BioSciences