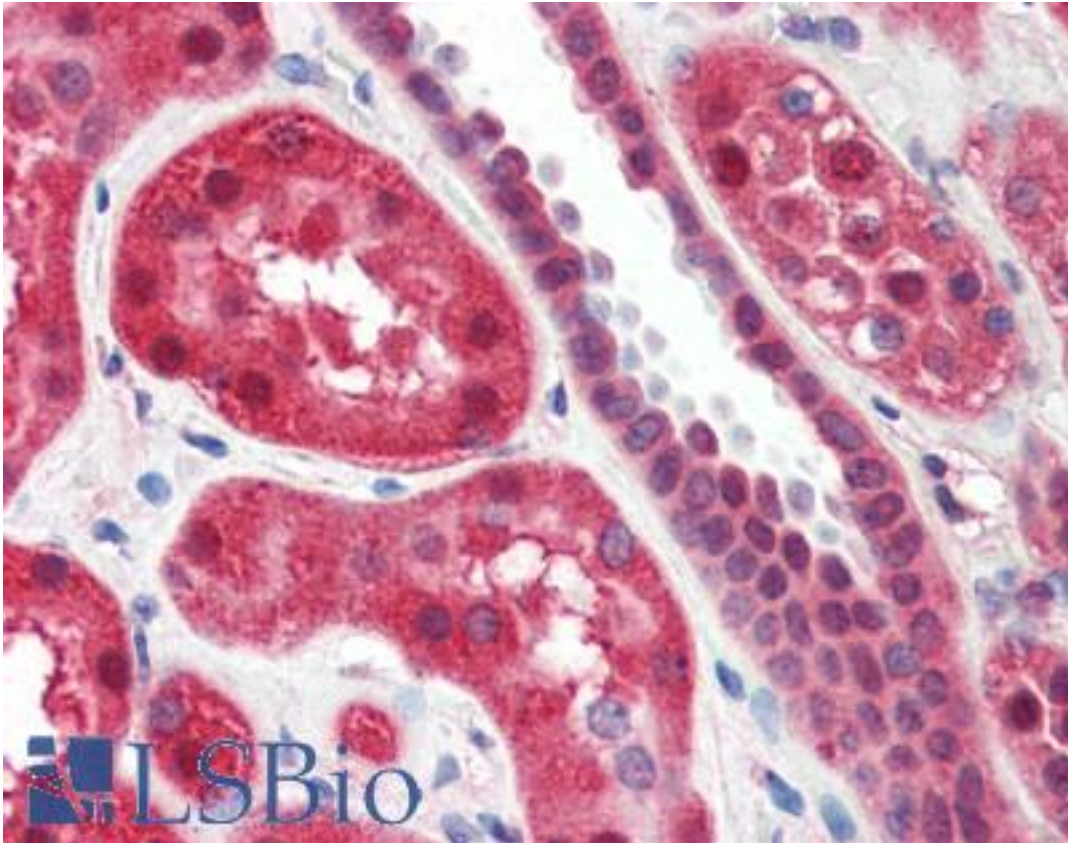


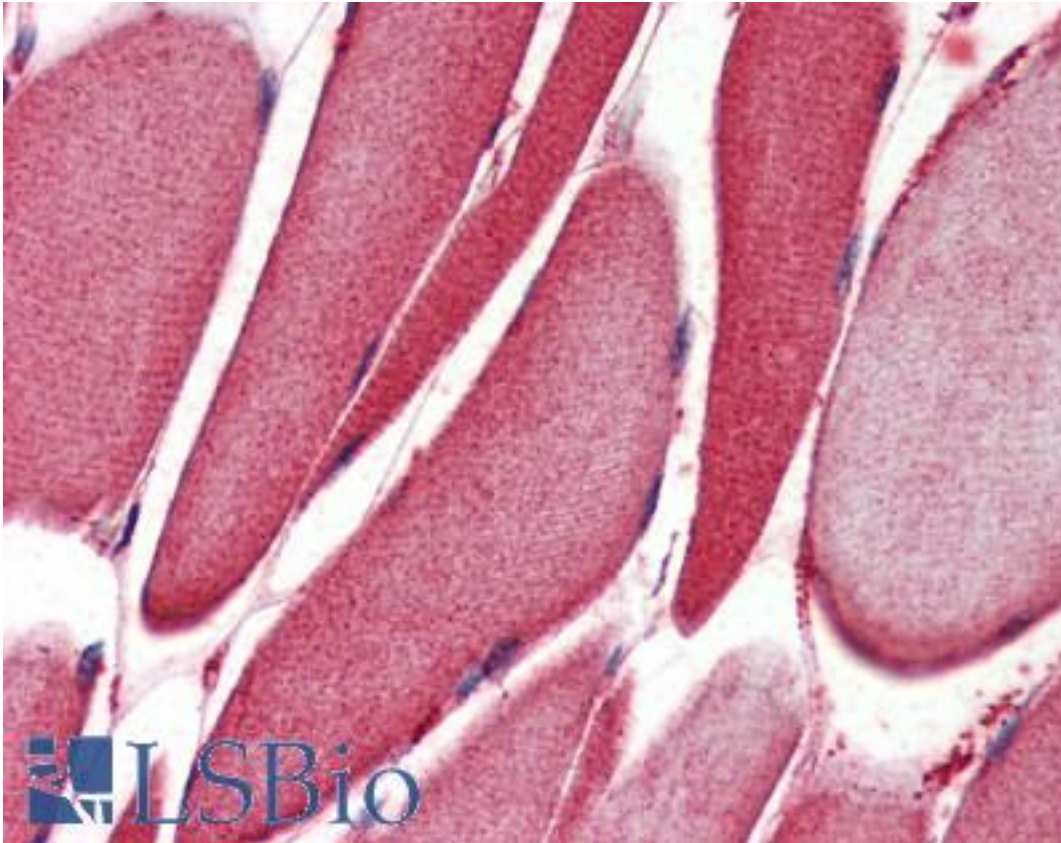
15-LOX / ALOX15 Goat anti-Human Polyclonal (Internal) Antibody - LS-B6689 - LSBio	
CatalogID:	LS-B6689
Validation:	This antibody replaces catalog number LS-C87382. It has been validated for use in the following assays: IHC-P.
Target:	arachidonate 15-lipoxygenase (ALOX15)
Synonyms:	ALOX15 Antibody, 15-lipoxygenase Antibody, 15-LOX Antibody, 15-lipooxygenase -1 Antibody, 15-LO-1 Antibody, 15LOX-1 Antibody, 15-LOX-1 Antibody, LOG15 Antibody, Arachidonate 15-lipoxygenase Antibody
Host	ALOX15 antibody was produced in Goat
Clonality:	Polyclonal
Immunogen Species:	15-LOX / ALOX15 antibody was raised against Human
Antigen Type:	Synthetic peptide
Immunogen:	15-LOX / ALOX15 antibody was raised against synthetic peptide C-HYKTDVAVKDDPE from an internal region of human ALOX15 / 15 Lipoxygenase 1 (NP_001131.3). Percent identity by BLAST analysis: Human, Gorilla, Orangutan, Gibbon, Monkey (100%); Elephant (85%).
Specificity:	Human ALOX15 / 15 Lipoxygenase 1.
Epitope:	Internal
Reactivity:	Human, Gorilla, Orangutan, Gibbon, Monkey
Purification:	Immunoaffinity purified
Presentation:	Tris-buffered saline, pH 7.3, 0.5% BSA, 0.02% sodium azide
Recommended Storage:	Store at -20°C. Minimize freezing and thawing.
Usage Summary:	Peptide ELISA: antibody detection limit dilution 1:32000. Western Blot: Approx. 80kD band observed in nuclear lysates of cell line HeLa (calculated MW of 74.8kD according to NP_001131.3). Recommended concentration: 0.2-0.5 ug/ml.
Uses:	IHC - Paraffin (2 µg/ml), Western blot (0.2 - 0.5 µg/ml), ELISA (1:32000) (Optimal dilution to be determined by the researcher)
Size:	50 µg
Concentration:	0.5 mg/ml

Immunohistochemistry Image:



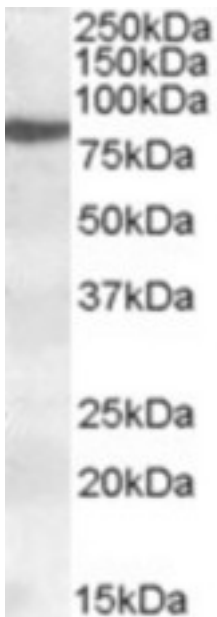
Anti-ALOX15 / 15 Lipoxygenase 1 antibody IHC of human kidney. Immunohistochemistry of formalin-fixed, paraffin-embedded tissue after heat-induced antigen retrieval. Antibody LS-B6689 concentration 2 ug/ml.

Immunohistochemistry Image:



Anti-ALOX15 / 15 Lipoxygenase 1 antibody IHC of human skeletal muscle. Immunohistochemistry of formalin-fixed, paraffin-embedded tissue after heat-induced antigen retrieval. Antibody LS-B6689 concentration 2 ug/ml.

Western Blot Image:



Antibody (0.2 ug/ml) staining of nuclear HeLa lysate (35 ug protein in RIPA buffer). Primary incubation was 1 hour. Detected by chemiluminescence.

Requested From:	Japan
Laboratory Reagent For In Vitro Research Use Only	
Not for resale without prior written consent from LifeSpan BioSciences, Inc.	
Created on 9/24/2014	
© 2014 LifeSpan BioSciences	