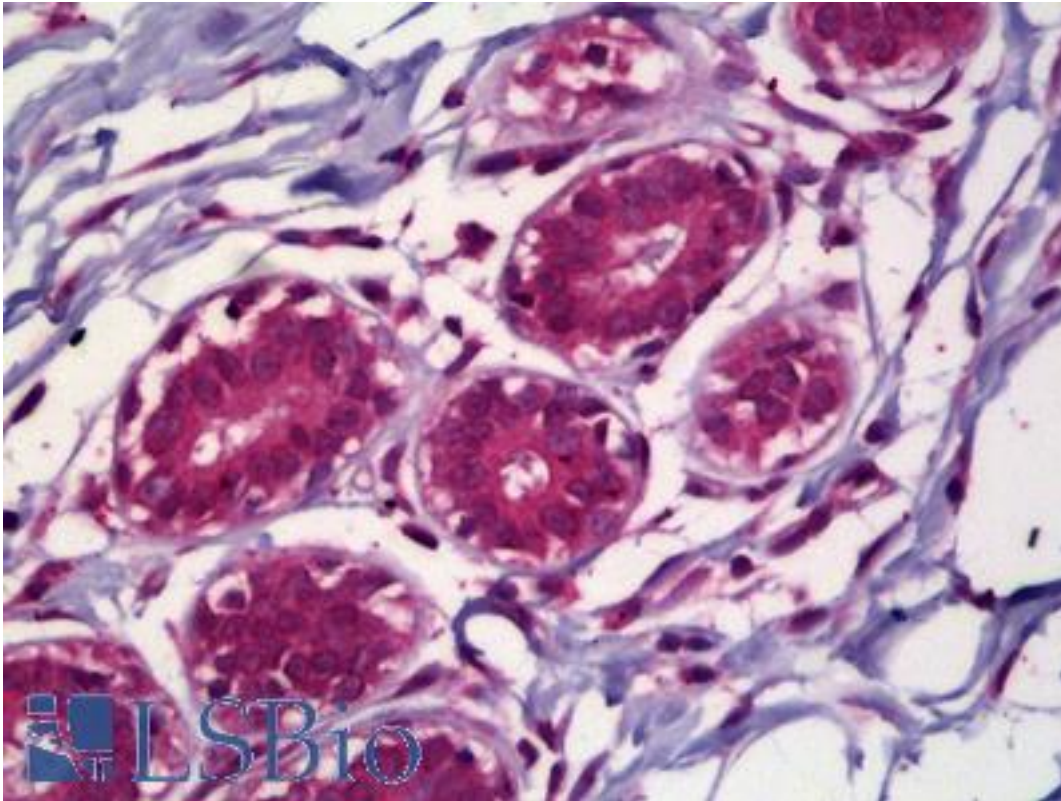


ACHE / Acetylcholinesterase Rabbit anti-Human Polyclonal Antibody - LS-B6676 - LSBio	
CatalogID:	LS-B6676
Validation:	This antibody replaces catalog number LS-C137450. It has been validated for use in the following assays: IHC-P.
Target:	acetylcholinesterase (Yt blood group) (ACHE)
Synonyms:	ACHE Antibody, ACEE Antibody, Acetylcholinesterase Antibody, N-ACHE Antibody, Yt blood group Antibody, ARACHE Antibody, YT Antibody
Host	ACHE antibody was produced in Rabbit
Clonality:	Polyclonal
Isotype:	IgG
Immunogen Species:	ACHE / Acetylcholinesterase antibody was raised against Human
Antigen Type:	Synthetic peptide
Immunogen:	ACHE / Acetylcholinesterase antibody was raised against synthetic peptide
Specificity:	This Polyclonal antibody can identify the AChE-S form but not the AChE-R form.
Reactivity:	Human
Purification:	Protein A purified
Presentation:	PBS, pH 7.4, 0.02% sodium azide
Recommended Storage:	Short term 4°C, long term aliquot and store at -20°C, avoid freeze thaw cycles.
Uses:	IHC - Paraffin (2.5 µg/ml), Western blot (1:1000 - 1:4000) (Optimal dilution to be determined by the researcher)
Size:	50 µl
Concentration:	1 mg/ml

Immunohistochemistry Image:



Anti-Acetylcholinesterase antibody IHC of human breast. Immunohistochemistry of formalin-fixed, paraffin-embedded tissue after heat-induced antigen retrieval. Antibody LS-B6676 concentration 2.5 ug/ml.

Requested From:

Japan

Laboratory Reagent For In Vitro Research Use Only

Not for resale without prior written consent from LifeSpan BioSciences, Inc.

Created on 9/24/2014

© 2014 LifeSpan BioSciences