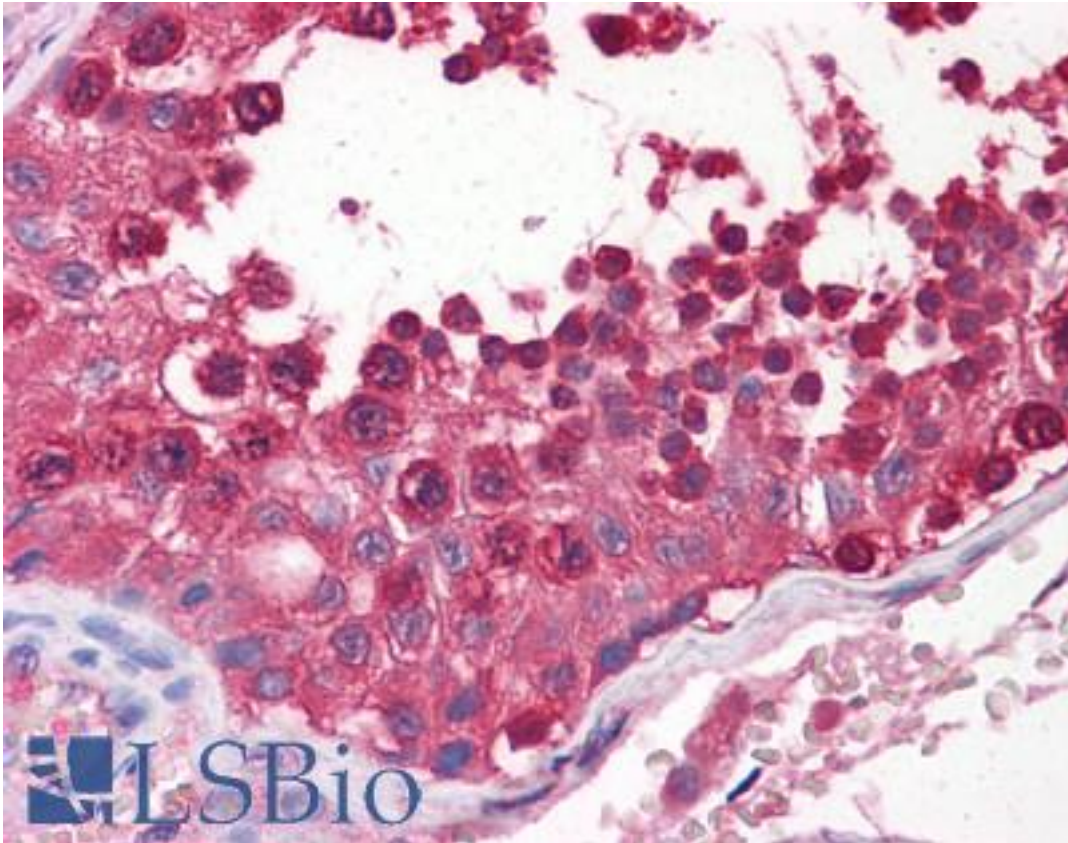


CSE1L Mouse anti-Human Monoclonal (2F4) Antibody - LS-B6674 - LSBio

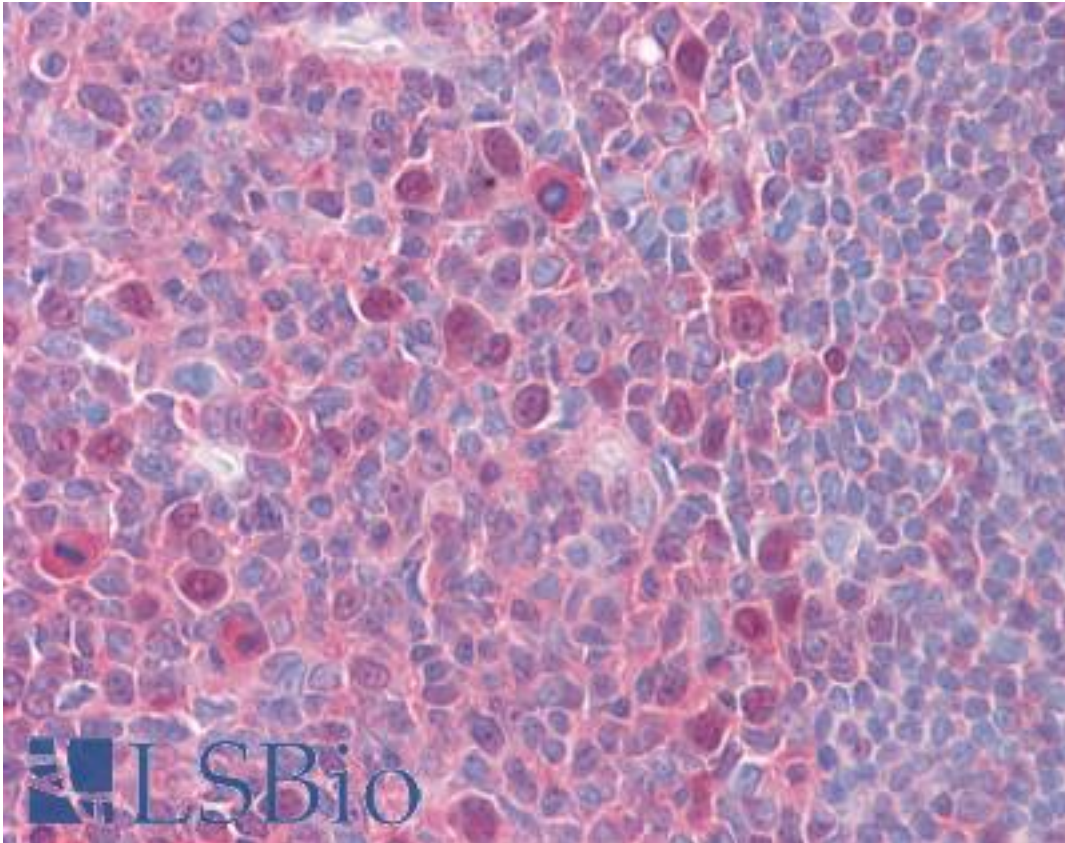
CatalogID:	LS-B6674
Validation:	This antibody replaces catalog number LS-C104926. It has been validated for use in the following assays: IHC-P.
Target:	CSE1 chromosome segregation 1-like (yeast) (CSE1L)
Synonyms:	CSE1L Antibody, CAS Antibody, CSE1 Antibody, Exp2 Antibody, Importin-alpha re-exporter Antibody, Exportin-2 Antibody, XPO2 Antibody
Host	CSE1L antibody was produced in Mouse
Clonality:	Monoclonal
Isotype:	IgG1,k
Clone Name:	2F4
Immunogen Species:	CSE1L antibody was raised against Human
Antigen Type:	Recombinant protein
Immunogen:	CSE1L antibody was raised against cSE1L (NP_001307, 872 a.a. ~ 972 a.a) partial recombinant protein with GST tag. MW of the GST tag alone is 26 KDa.
Reactivity:	Human
Purification:	Protein A purified
Presentation:	PBS, pH 7.2
Recommended Storage:	Store at -20°C. Aliquot to avoid freeze/thaw cycles.
Usage Summary:	Western Blot (Cell lysate) - positive control HeLa NE. Immunofluorescence (10 ug/ml) - positive control HeLa cells. Sandwich ELISA (Recombinant protein).
Uses:	IHC - Paraffin (5 µg/ml), Immunofluorescence (10 µg/ml), Western blot (1:500 - 1:1000), ELISA (Optimal dilution to be determined by the researcher)
Size:	50 µg

Immunohistochemistry Image:



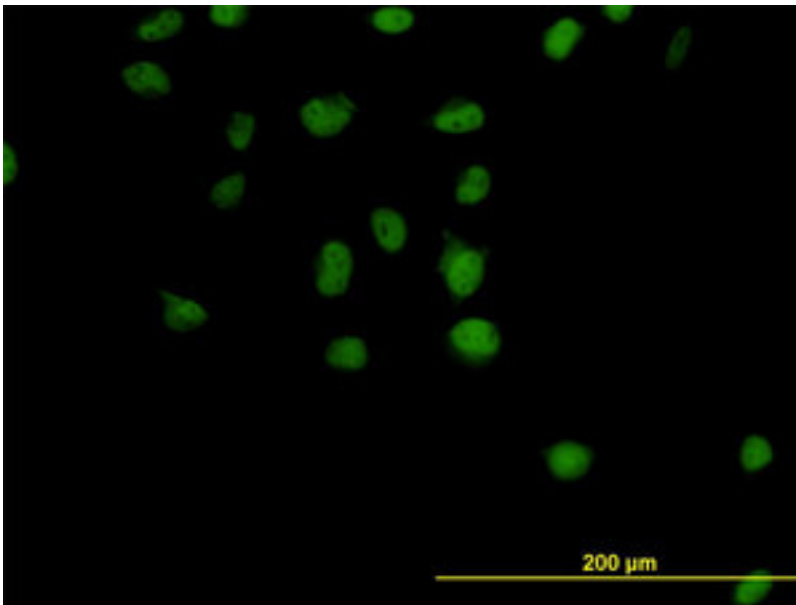
Anti-CSE1L antibody IHC of human testis. Immunohistochemistry of formalin-fixed, paraffin-embedded tissue after heat-induced antigen retrieval. Antibody LS-B6674 concentration 5 ug/ml.

Immunohistochemistry Image:



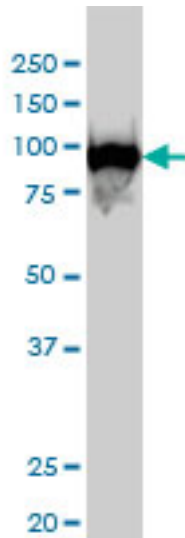
Anti-CSE1L antibody IHC of human tonsil. Immunohistochemistry of formalin-fixed, paraffin-embedded tissue after heat-induced antigen retrieval. Antibody LS-B6674 concentration 5 ug/ml.

Immunofluorescence Image:



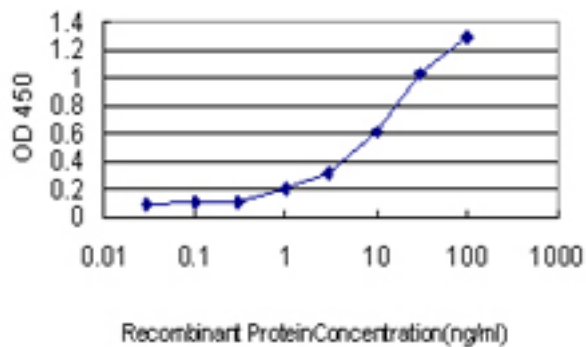
Immunofluorescence of monoclonal antibody to CSE1L on HeLa cell (antibody concentration 10 ug/ml).

Western Blot Image:



CSE1L monoclonal antibody (M04), clone 2F4 Western blot of CSE1L expression in HeLa NE.

ELISA Image:



Detection limit for recombinant GST tagged CSE1L is approximately 0.1 ng/ml as a capture antibody.

Requested From:

Japan

Laboratory Reagent For In Vitro Research Use Only

Not for resale without prior written consent from LifeSpan BioSciences, Inc.

Created on 9/24/2014

© 2014 LifeSpan BioSciences