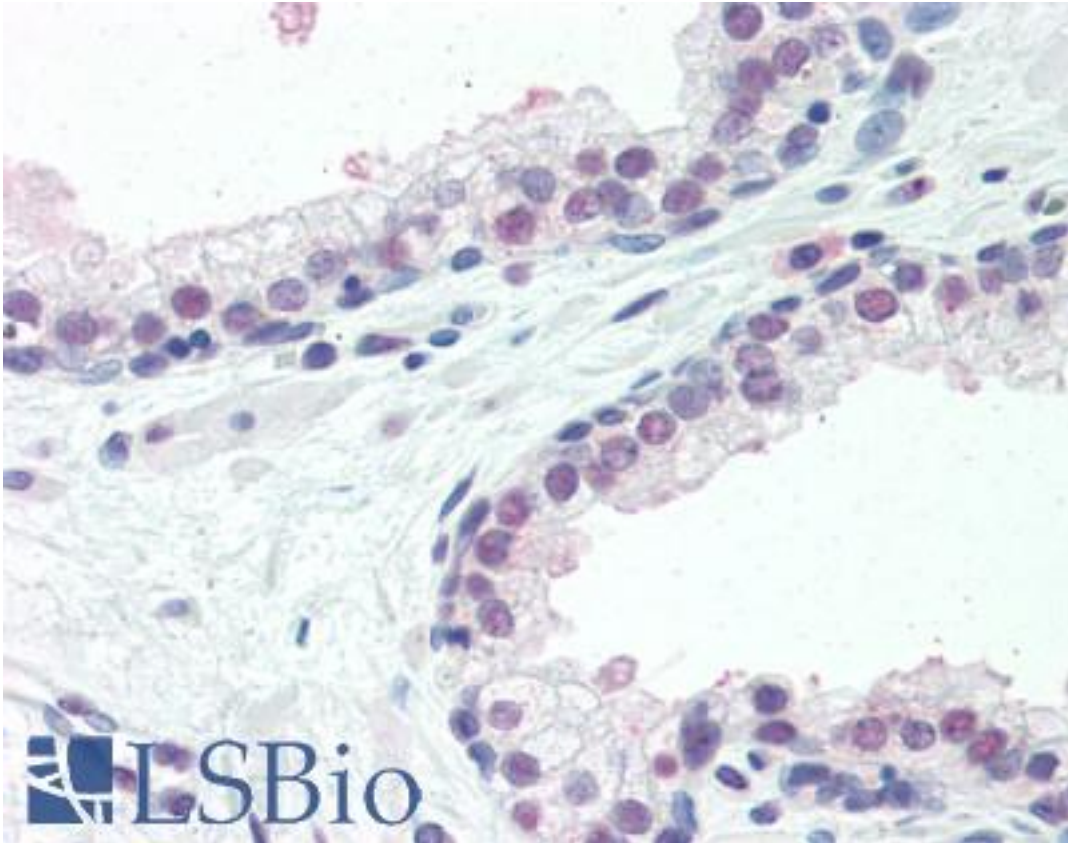


ISG15 Rabbit anti-Human Polyclonal (N-Terminus) Antibody - LS-B6673 - LSBio

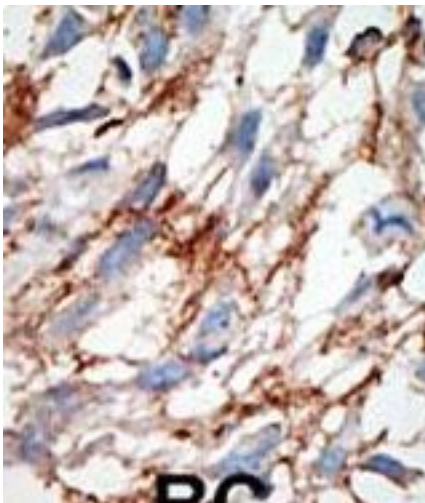
CatalogID:	LS-B6673
Validation:	This antibody replaces catalog number LS-C98670. It has been validated for use in the following assays: IHC-P.
Target:	ISG15 ubiquitin-like modifier
Synonyms:	ISG15 Antibody, HUERP Antibody, IF15 Antibody, ISG15 ubiquitin-like modifier Antibody, G1P2 Antibody, IP17 Antibody, Ubiquitin-like protein ISG15 Antibody, UERP Antibody
Host	ISG15 antibody was produced in Rabbit
Clonality:	Polyclonal
Immunogen Species:	ISG15 antibody was raised against Human
Antigen Type:	Synthetic peptide
Immunogen:	ISG15 antibody was raised against kLH conjugated synthetic peptide selected from the N-terminal region of human ISG15.
Epitope:	N-Terminus
Reactivity:	Human
Purification:	Ammonium sulfate precipitation
Presentation:	PBS, 0.09% sodium azide
Recommended Storage:	Maintain refrigerated at 2-8°C for up to 6 months. For long term storage store at -20°C.
Uses:	IHC - Paraffin (10 µg/ml), Western blot (1:1000) (Optimal dilution to be determined by the researcher)
Size:	200 µl

Immunohistochemistry Image:



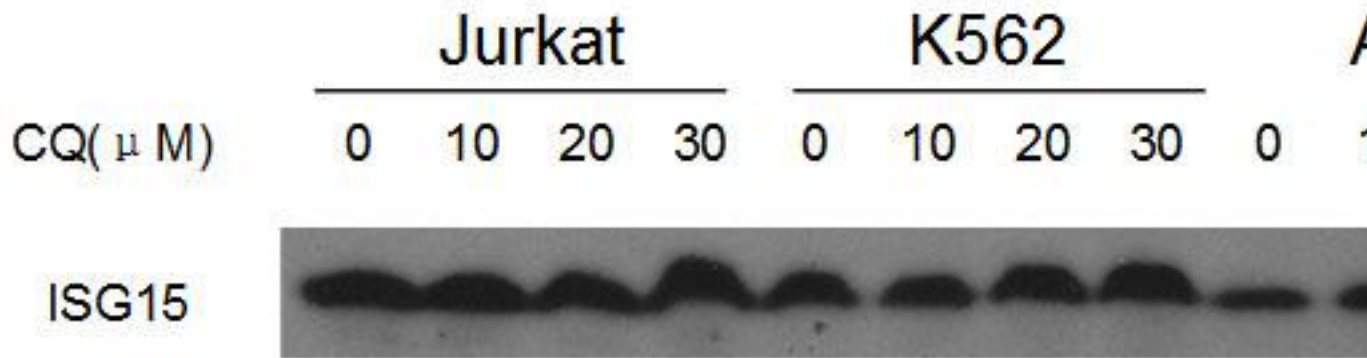
Anti-ISG15 antibody IHC of human prostate. Immunohistochemistry of formalin-fixed, paraffin-embedded tissue after heat-induced antigen retrieval. Antibody LS-B6673 concentration 10 ug/ml.

Immunohistochemistry Image:



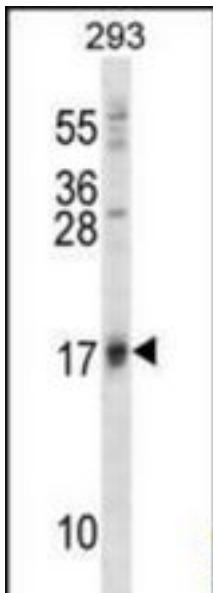
Formalin-fixed and paraffin-embedded human cancer tissue reacted with the primary antibody, which was peroxidase-conjugated to the secondary antibody, followed by DAB staining. This data demonstrates the use of this antibody for immunohistochemistry; clinical relevance has not been evaluated. BC = breast carcinoma; HC = hepatocarcinoma.

Western Blot Image:



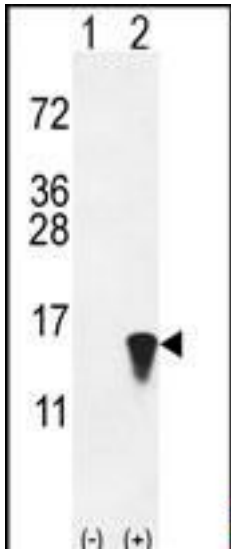
ISG15 Antibody western blot analysis in Jurkat, K562 and AML-2 cell line lysates treated with a small molecular of 0,10,20,30uM for 24 hours.(Offered by Biyin Cao, Soochow University, Center for Blood Research)

Western Blot Image:



ISG15 Antibody (A46) western blot analysis in 293 cell line lysates (35 ug/lane). This demonstrates the ISG15 antibody detected the ISG15 protein (arrow).

Western Blot Image:



Western blot analysis of ISG15 (arrow) using rabbit polyclonal hISG15-A46. 293 cell lysates (2 ug/lane) either nontransfected (Lane 1) or transiently transfected with the ISG15 gene (Lane 2).

Requested From:

Japan

Laboratory Reagent For In Vitro Research Use Only

Not for resale without prior written consent from LifeSpan BioSciences, Inc.

Created on 9/24/2014

© 2014 LifeSpan BioSciences