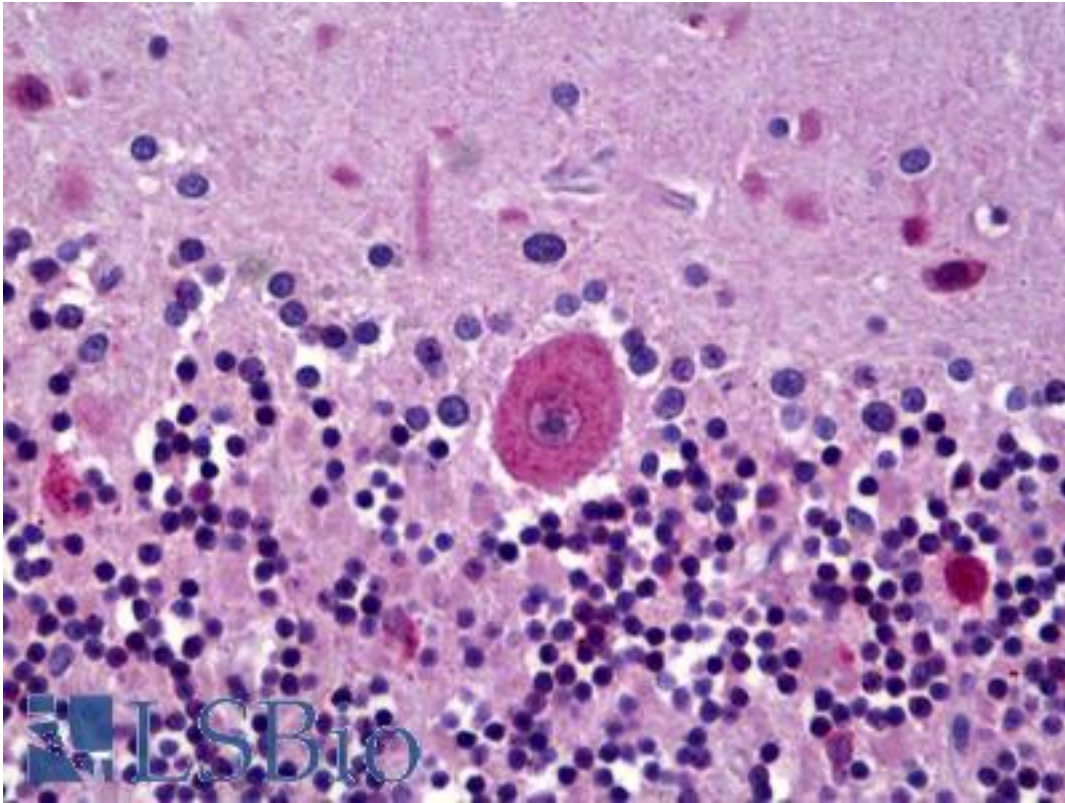


GLRA3 Rabbit anti-Human Polyclonal (C-Terminus) Antibody - LS-B6671 - LSBio

CatalogID:	LS-B6671
Validation:	This antibody replaces catalog number LS-C121226. It has been validated for use in the following assays: IHC-P.
Target:	glycine receptor, alpha 3 (GLRA3)
Synonyms:	GLRA3 Antibody, Glycine receptor alpha 3 Antibody, GlyR alpha 3 Antibody, Glycine receptor, alpha 3 Antibody, Ligand gated ion channel Antibody
Family / Subfamily:	Ion Channel / Glycine receptor
Host	GLRA3 antibody was produced in Rabbit
Clonality:	Polyclonal
Isotype:	IgG
Immunogen Species:	GLRA3 antibody was raised against Human
Immunogen:	GLRA3 antibody was raised against linear peptide selected from residues surrounding the C-terminus of human GLRA3.
Specificity:	Recognizes human Glycine Receptor $\alpha 3$ subunit. Species cross-reactivity: mouse. Species sequence homology: rat (92%).
Epitope:	C-Terminus
Reactivity:	Human, Mouse
Predicted Reactivity:	Rat
Purification:	Immunoaffinity purified
Presentation:	0.1 M Tris-glycine, pH 7.4, 150 mM sodium chloride, 0.05% sodium azide
Recommended Storage:	May be stored at 4°C for short-term only. For long-term storage and to avoid repeated freezing and thawing, aliquot and store at -20°C. Aliquots are stable for at least 12 months at -20°C
Usage Summary:	Suitable for use in Western Blot and Immunohistochemistry. Immunohistochemistry (paraffin): 1:100-500.
Uses:	IHC - Paraffin (5 μ g/ml), Western blot (1:100) (Optimal dilution to be determined by the researcher)
Size:	50 μ g
Concentration:	0.5 mg/ml

Immunohistochemistry Image:



Anti-GLRA3 antibody IHC of human brain, cerebellum, Purkinje cells. Immunohistochemistry of formalin-fixed, paraffin-embedded tissue after heat-induced antigen retrieval. Antibody LS-B6671 concentration 5 ug/ml.

Requested From:

Japan

Laboratory Reagent For In Vitro Research Use Only

Not for resale without prior written consent from LifeSpan BioSciences, Inc.

Created on 9/24/2014

© 2014 LifeSpan BioSciences