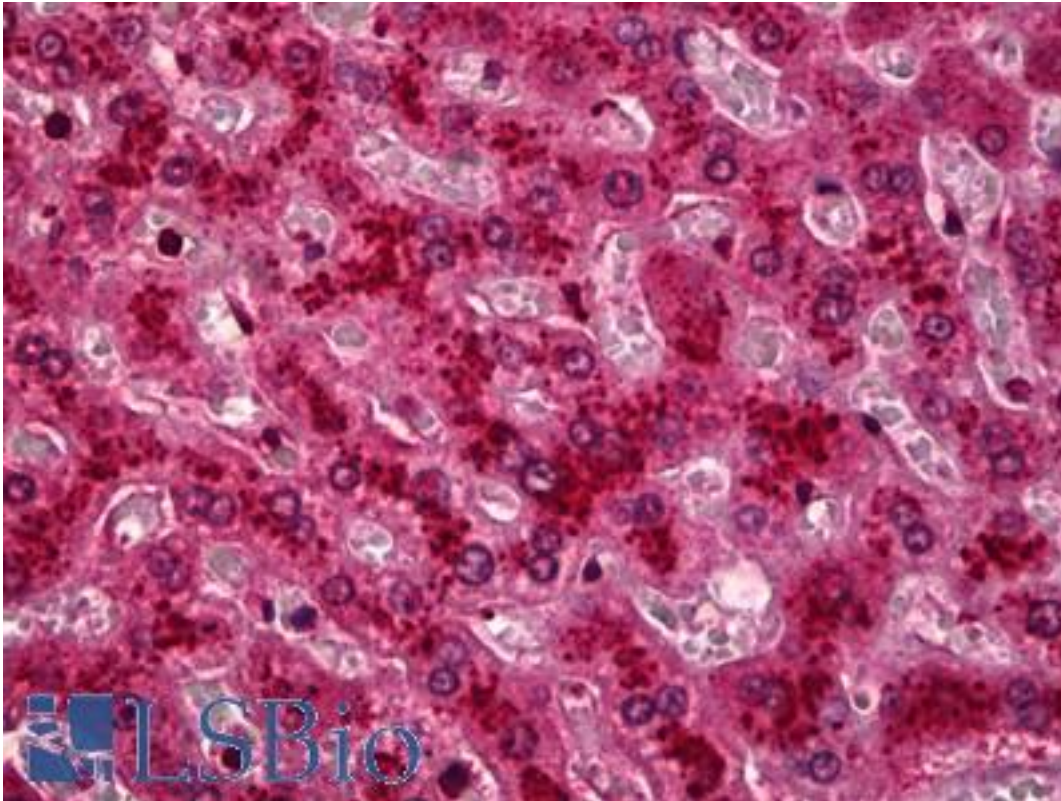


HYOU1 / ORP150 Rabbit anti-Human Monoclonal (Internal) (EPR5890) Antibody - LS-B6661 - LSBio

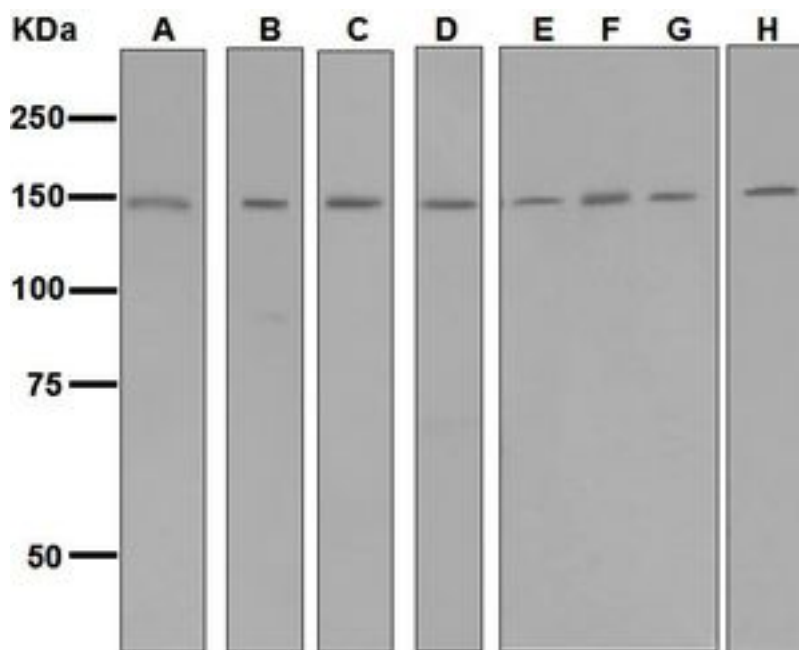
CatalogID:	LS-B6661
Validation:	This antibody replaces catalog number LS-C138672. It has been validated for use in the following assays: IHC-P.
Target:	hypoxia up-regulated 1 (HYOU1)
Synonyms:	HYOU1 Antibody, GRP-170 Antibody, Grp170 Antibody, Glucose-regulated protein 170 Antibody, Hypoxia up-regulated 1 Antibody, Hypoxia up-regulated protein 1 Antibody, HSP12A Antibody, ORP150 Antibody, ORP-150 Antibody
Host	HYOU1 antibody was produced in Rabbit
Clonality:	Monoclonal
Clone Name:	EPR5890
Immunogen Species:	HYOU1 / ORP150 antibody was raised against Human
Antigen Type:	Synthetic peptide
Immunogen:	HYOU1 / ORP150 antibody was raised against synthetic peptide
Specificity:	Human ORP150. Species cross-reactivity is based on WB analysis.
Epitope:	Internal
Reactivity:	Human, Mouse, Rat
Purification:	Tissue culture supernatant
Presentation:	Tris-Glycine-NaCl or PBS, pH 7.2-7.4, 40-50% Glycerol, 0.01% sodium azide, 0.05% BSA
Recommended Storage:	Short term 4°C, long term aliquot and store at -20°C, avoid freeze thaw cycles.
Uses:	IHC - Paraffin (1:50), Western blot (1:1000 - 1:10000), Flow Cytometry (1:10 - 1:100) (Optimal dilution to be determined by the researcher)
Size:	50 µl

Immunohistochemistry Image:



Anti-HYOU1 / ORP150 antibody IHC of human liver. Immunohistochemistry of formalin-fixed, paraffin-embedded tissue after heat-induced antigen retrieval. Antibody LS-B6661 dilution 1:50.

Western Blot Image:



Western blot analysis on (A) fetal liver, (B) rat liver, (C) rat pancreas, (D) 293T, (E) MCF-7, (F) MDA-MB-435S, (G) SH-SY5Y, and (H) HeLa lysates using anti-GRP170 / ORP150 antibody.

Requested From:	Japan
Laboratory Reagent For In Vitro Research Use Only	
Not for resale without prior written consent from LifeSpan BioSciences, Inc.	
Created on 9/24/2014	
© 2014 LifeSpan BioSciences	