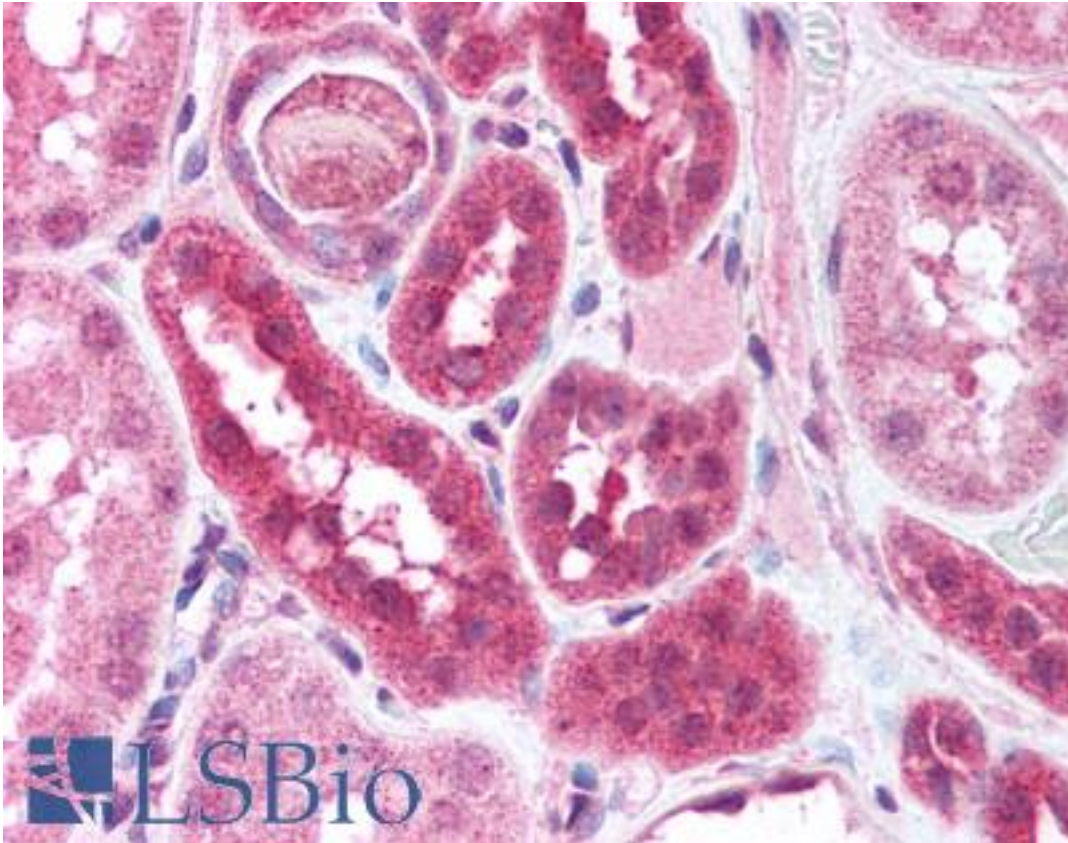


DCLRE1C / Artemis Rabbit anti-Human Polyclonal (aa677-692) Antibody - LS-B665 - LSBio

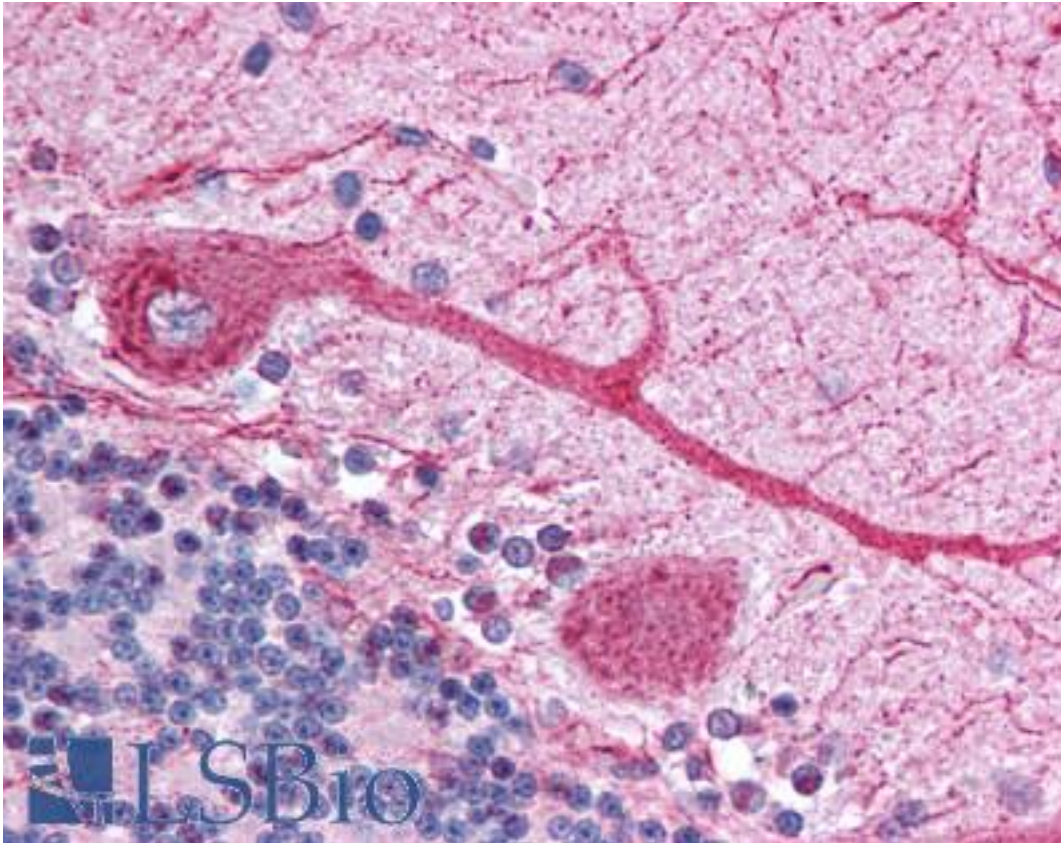
CatalogID:	LS-B665
Validation:	This antibody replaces catalog number LS-C2607. It has been validated for use in the following assays: IHC.
Target:	DNA cross-link repair 1C (DCLRE1C)
Synonyms:	DCLRE1C Antibody, A-SCID Antibody, ARTEMIS Antibody, DCLREC1C Antibody, HSNM1C Antibody, SCIDA Antibody, RS-SCID Antibody, SNM1C Antibody, SNM1-like protein Antibody, Protein A-SCID Antibody, Protein artemis Antibody, PSO2 homolog Antibody, ASCID Antibody, DNA cross-link repair 1C Antibody, SNM1 homolog C Antibody
Family / Subfamily:	DNA cross-link repair
Host	DCLRE1C antibody was produced in Rabbit
Clonality:	Polyclonal
Immunogen Species:	DCLRE1C / Artemis antibody was raised against Human
Antigen Type:	Synthetic peptide
Immunogen:	DCLRE1C / Artemis antibody was raised against a synthetic peptide made to residues 677-692 [GESIAVKKRKCSLLDT] of the human Artemis protein Percent identity by BLAST analysis: Human, Gorilla, Gibbon, Monkey (100%); Baboon (94%); Marmoset (88%); Orangutan, Bat, Rabbit, Horse (81%).
Specificity:	Artemis.
Epitope:	aa677-692
Reactivity:	Human, Gorilla, Gibbon, Monkey
Purification:	Affinity purified
Presentation:	Contains 0.05% sodium azide
Recommended Storage:	+4°C or -20°C, Avoid repeated freezing and thawing.
Usage Summary:	Immunohistochemistry: LS-B665 was validated for use in immunohistochemistry on a panel of 21 formalin-fixed, paraffin-embedded (FFPE) human tissues after heat induced antigen retrieval in pH 6.0 citrate buffer. After incubation with the primary antibody, slides were incubated with biotinylated secondary antibody, followed by alkaline phosphatase-streptavidin and chromogen. The stained slides were evaluated by a pathologist to confirm staining specificity. The optimal working concentration for LS-B665 was determined to be 5 ug/ml.
Uses:	IHC - Paraffin (5 µg/ml), Western blot (1:500 - 1:1000) (Optimal dilution to be determined by the researcher)
Size:	50 µl
Concentration:	1 mg/ml

Immunohistochemistry Image:



Anti-DCLRE1C / ARTEMIS antibody IHC of human kidney. Immunohistochemistry of formalin-fixed, paraffin-embedded tissue after heat-induced antigen retrieval. Antibody LS-B665 concentration 5 ug/ml.

Immunohistochemistry Image:



Anti-DCLRE1C / ARTEMIS antibody IHC of human brain, cerebellum. Immunohistochemistry of formalin-fixed, paraffin-embedded tissue after heat-induced antigen retrieval. Antibody LS-B665 concentration 5 ug/ml.

Requested From:

Japan

Laboratory Reagent For In Vitro Research Use Only

Not for resale without prior written consent from LifeSpan BioSciences, Inc.

Created on 9/24/2014

© 2014 LifeSpan BioSciences